

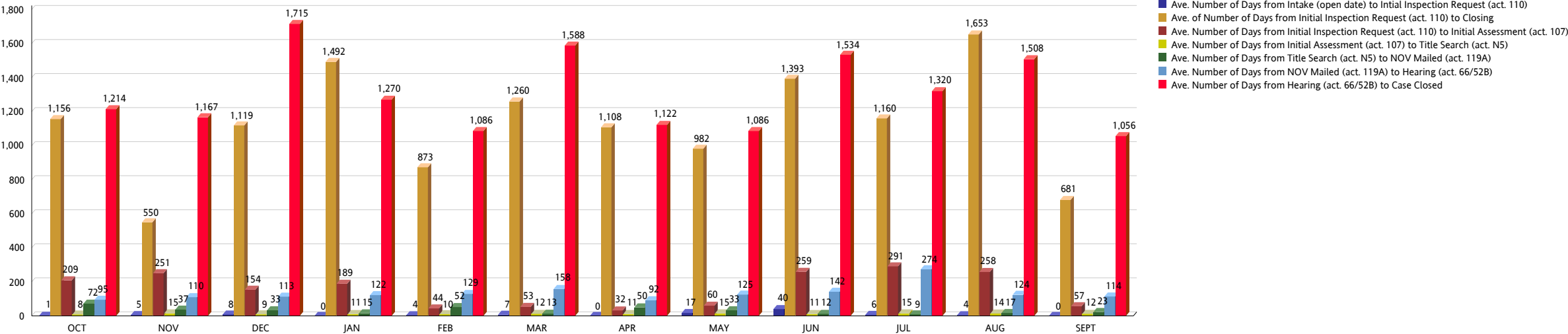
MIAMI-DADE COUNTY
DEPARTMENT OF REGULATORY AND ECONOMIC RESOURCES (RER)
UNSAFE STRUCTURES MEASURES - COMMERCIAL
From OCTOBER 2019 To SEPTEMBER 2020

COMMERCIAL NO INJUNCTION (ALL PROPERTIES)	OCT	NOV	DEC	JAN	FEB	MAR	APR	MAY	JUN	JUL	AUG	SEPT	YTD TOTAL
Ave. Number of Days from Intake (open date) to Intial Inspection Request (act. 110)	1	5	8	0	4	7	0	17	40	6	4	0	
Number of Cases from Intake (open date) to Intial Inspection Request (act. 110)	29	27	36	23	39	36	14	37	33	15	15	42	346
Ave. of Number of Days from Initial Inspection Request (act. 110) to Closing	1,156	550	1,119	1,492	873	1,260	1,108	982	1,393	1,160	1,653	681	
Number of Cases from Initial Inspection Request (act. 110) to Closing	29	27	36	23	39	36	14	37	33	15	15	42	346
Ave. Number of Days from Initial Inspection Request (act. 110) to Initial Assessment (act. 107)	209	251	154	189	44	53	32	60	259	291	258	57	
Number of Cases Closed from Initial Inspection Request (act. 110) to Initial Assessment (act. 107)	22	11	25	17	29	32	10	36	29	15	15	28	269
Ave. Number of Days from Initial Assessment (act. 107) to Title Search (act. N5)	8	15	9	11	10	12	11	15	11	15	14	12	
Number of Cases from Initial Assessment (act. 107) to Title Search (act. N5)	17	9	19	16	24	21	9	28	20	14	15	26	218
Ave. Number of Days from Title Search (act. N5) to NOV Mailed (act. 119A)	72	37	33	15	52	13	50	33	12	9	17	23	
Number of Cases from Title Search (act. N5) to NOV Mailed (act. 119A)	16	8	17	16	23	21	9	28	20	12	15	26	211
Ave. Number of Days from NOV Mailed (act. 119A) to Hearing (act. 66/52B)	95	110	113	122	129	158	92	125	142	274	124	114	
Number of Cases from NOV Mailed (act. 119A) to Hearing (act. 66/52B)	17	8	17	15	22	22	8	26	21	7	12	16	191
Ave. Number of Days from Hearing (act. 66/52B) to Case Closed	1,214	1,167	1,715	1,270	1,086	1,588	1,122	1,086	1,534	1,320	1,508	1,056	
Number of Cases from Hearing (act. 66/52B) to Case Closed	18	8	17	15	22	22	8	26	21	7	12	16	192

	Weighted Average
Ave. Number of Days from Intake (open date) to Intial Inspection Request (act. 110)	8.55
Ave. of Number of Days from Initial Inspection Request (act. 110) to Closing	1,072.23
Ave. Number of Days from Initial Inspection Request (act. 110) to Initial Assessment (act. 107)	138.35
Ave. Number of Days from Initial Assessment (act. 107) to Title Search (act. N5)	11.84
Ave. Number of Days from Title Search (act. N5) to NOV Mailed (act. 119A)	29.82
Ave. Number of Days from NOV Mailed (act. 119A) to Hearing (act. 66/52B)	129.62
Ave. Number of Days from Hearing (act. 66/52B) to Case Closed	1,311.87

MIAMI-DADE COUNTY
DEPARTMENT OF REGULATORY AND ECONOMIC RESOURCES (RER)
UNSAFE STRUCTURES MEASURES - COMMERCIAL
From OCTOBER 2019 To SEPTEMBER 2020

COMMERCIAL / NO INJUNCTION / ALL PROPERTIES



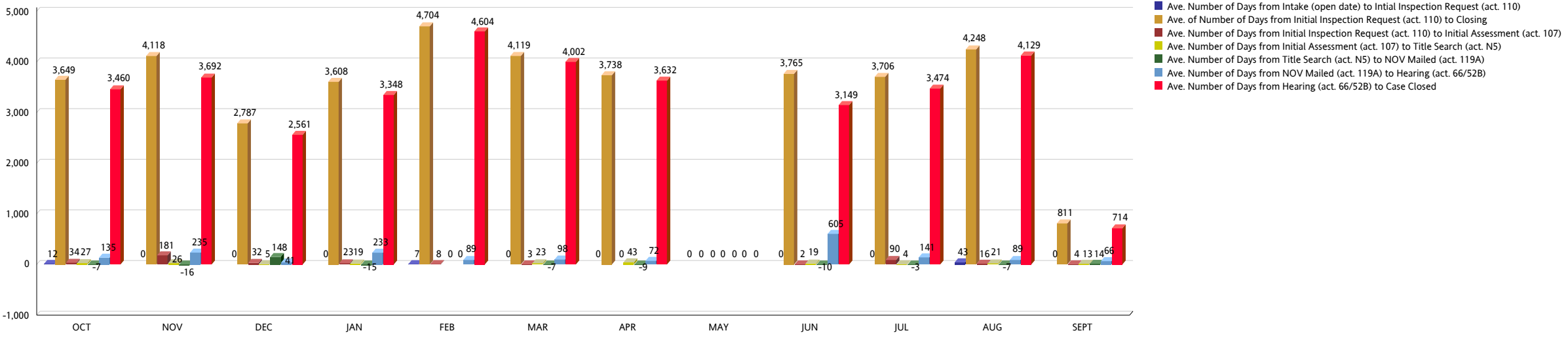
MIAMI-DADE COUNTY
DEPARTMENT OF REGULATORY AND ECONOMIC RESOURCES (RER)
UNSAFE STRUCTURES MEASURES - COMMERCIAL
From OCTOBER 2019 To SEPTEMBER 2020

COMMERCIAL WITH INJUNCTION (ALL PROPERTIES)	OCT	NOV	DEC	JAN	FEB	MAR	APR	MAY	JUN	JUL	AUG	SEPT	YTD TOTAL
Ave. Number of Days from Intake (open date) to Intial Inspection Request (act. 110)	12	0	0	0	7	0	0	0	0	0	43	0	
Number of Cases from Intake (open date) to Intial Inspection Request (act. 110)	1	1	1	1	1	1	1	0	1	1	1	1	11
Ave. of Number of Days from Initial Inspection Request (act. 110) to Closing	3,649	4,118	2,787	3,608	4,704	4,119	3,738	0	3,765	3,706	4,248	811	
Number of Cases from Initial Inspection Request (act. 110) to Closing	1	1	1	1	1	1	1	0	1	1	1	1	11
Ave. Number of Days from Initial Inspection Request (act. 110) to Initial Assessment (act. 107)	34	181	32	23	8	3	0	0	2	90	16	4	
Number of Cases Closed from Initial Inspection Request (act. 110) to Initial Assessment (act. 107)	1	1	1	1	1	1	1	0	1	1	1	1	11
Ave. Number of Days from Initial Assessment (act. 107) to Title Search (act. N5)	27	26	5	19	0	23	43	0	19	4	21	13	
Number of Cases from Initial Assessment (act. 107) to Title Search (act. N5)	1	1	1	1	0	1	1	0	1	1	1	1	10
Ave. Number of Days from Title Search (act. N5) to NOV Mailed (act. 119A)	-7	-16	148	-15	0	-7	-9	0	-10	-3	-7	14	
Number of Cases from Title Search (act. N5) to NOV Mailed (act. 119A)	1	1	1	1	0	1	1	0	1	1	1	1	10
Ave. Number of Days from NOV Mailed (act. 119A) to Hearing (act. 66/52B)	135	235	41	233	89	98	72	0	605	141	89	66	
Number of Cases from NOV Mailed (act. 119A) to Hearing (act. 66/52B)	1	1	1	1	1	1	1	0	1	1	1	1	11
Ave. Number of Days from Hearing (act. 66/52B) to Case Closed	3,460	3,692	2,561	3,348	4,604	4,002	3,632	0	3,149	3,474	4,129	714	
Number of Cases from Hearing (act. 66/52B) to Case Closed	1	1	1	1	1	1	1	0	1	1	1	1	11

	Weighted Average
Ave. Number of Days from Intake (open date) to Intial Inspection Request (act. 110)	5.64
Ave. of Number of Days from Initial Inspection Request (act. 110) to Closing	3,568.45
Ave. Number of Days from Initial Inspection Request (act. 110) to Initial Assessment (act. 107)	35.73
Ave. Number of Days from Initial Assessment (act. 107) to Title Search (act. N5)	20.00
Ave. Number of Days from Title Search (act. N5) to NOV Mailed (act. 119A)	8.80
Ave. Number of Days from NOV Mailed (act. 119A) to Hearing (act. 66/52B)	164.00
Ave. Number of Days from Hearing (act. 66/52B) to Case Closed	3,342.27

MIAMI-DADE COUNTY
DEPARTMENT OF REGULATORY AND ECONOMIC RESOURCES (RER)
UNSAFE STRUCTURES MEASURES - COMMERCIAL
From OCTOBER 2019 To SEPTEMBER 2020

COMMERCIAL / WITH INJUNCTION / ALL PROPERTIES



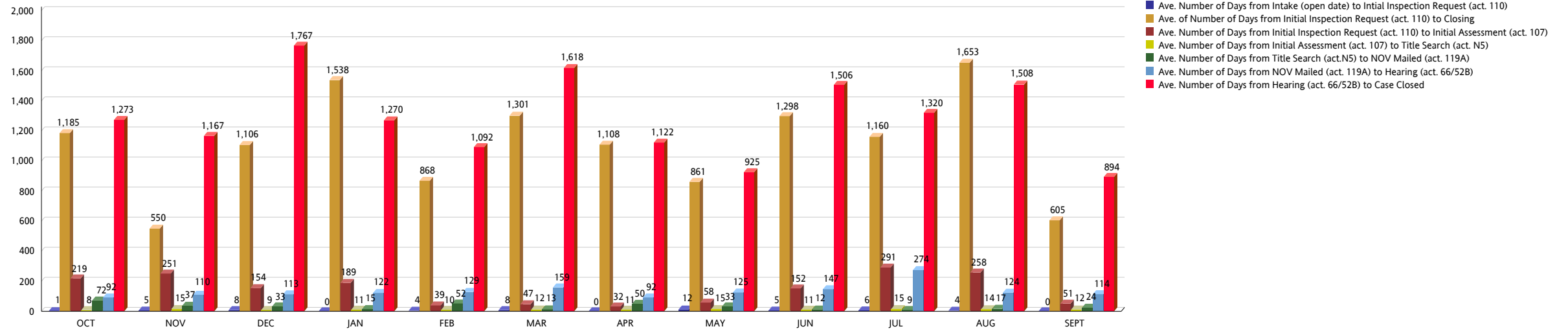
MIAMI-DADE COUNTY
DEPARTMENT OF REGULATORY AND ECONOMIC RESOURCES (RER)
UNSAFE STRUCTURES MEASURES - COMMERCIAL
From OCTOBER 2019 To SEPTEMBER 2020

COMMERCIAL NO INJUNCTION (EXCLUDING COUNTY PROPERTIES)	OCT	NOV	DEC	JAN	FEB	MAR	APR	MAY	JUN	JUL	AUG	SEPT	YTD TOTAL
Ave. Number of Days from Intake (open date) to Intial Inspection Request (act. 110)	1	5	8	0	4	8	0	12	5	6	4	0	
Number of Cases from Intake (open date) to Intial Inspection Request (act. 110)	28	27	35	22	37	32	14	36	31	15	15	41	333
Ave. of Number of Days from Initial Inspection Request (act. 110) to Closing	1,185	550	1,106	1,538	868	1,301	1,108	861	1,298	1,160	1,653	605	
Number of Cases from Initial Inspection Request (act. 110) to Closing	28	27	35	22	37	32	14	36	31	15	15	41	333
Ave. Number of Days from Initial Inspection Request (act. 110) to Initial Assessment (act. 107)	219	251	154	189	39	47	32	58	152	291	258	51	
Number of Cases from Initial Inspection Request (act. 110) to Initial Assessment (act. 107)	21	11	24	17	28	30	10	35	27	15	15	27	260
Ave. Number of Days from Initial Assessment (act. 107) to Title Search (act. N5)	8	15	9	11	10	12	11	15	11	15	14	12	
Number of Cases from Initial Assessment (act. 107) to Title Search (act. N5)	17	9	19	16	24	21	9	28	20	14	15	25	217
Ave. Number of Days from Title Search (act.N5) to NOV Mailed (act. 119A)	72	37	33	15	52	13	50	33	12	9	17	24	
Number of Cases from Title Search (act. N5) to NOV Mailed (act. 119A)	16	8	17	16	23	21	9	28	20	12	15	25	210
Ave. Number of Days from NOV Mailed (act. 119A) to Hearing (act. 66/52B)	92	110	113	122	129	159	92	125	147	274	124	114	
Number of Cases from NOV Mailed (act. 119A) to Hearing (act. 66/52B)	16	8	16	15	21	21	8	25	20	7	12	15	184
Ave. Number of Days from Hearing (act. 66/52B) to Case Closed	1,273	1,167	1,767	1,270	1,092	1,618	1,122	925	1,506	1,320	1,508	894	
Number of Cases from Hearing (act. 66/52B) to Case Closed	17	8	16	15	21	21	8	25	20	7	12	15	185

	Weighted Average
Ave. Number of Days from Intake (open date) to Intial Inspection Request (act. 110)	4.76
Ave. of Number of Days from Initial Inspection Request (act. 110) to Closing	1,045.26
Ave. Number of Days from Initial Inspection Request (act. 110) to Initial Assessment (act. 107)	126.30
Ave. Number of Days from Initial Assessment (act. 107) to Title Search (act. N5)	11.84
Ave. Number of Days from Title Search (act. N5) to NOV Mailed (act. 119A)	29.98
Ave. Number of Days from NOV Mailed (act. 119A) to Hearing (act. 66/52B)	130.19
Ave. Number of Days from Hearing (act. 66/52B) to Case Closed	1,287.44

MIAMI-DADE COUNTY
DEPARTMENT OF REGULATORY AND ECONOMIC RESOURCES (RER)
UNSAFE STRUCTURES MEASURES - COMMERCIAL
From OCTOBER 2019 To SEPTEMBER 2020

COMMERCIAL / NO INJUNCTION / EXCLUDING COUNTY PROPERTIES

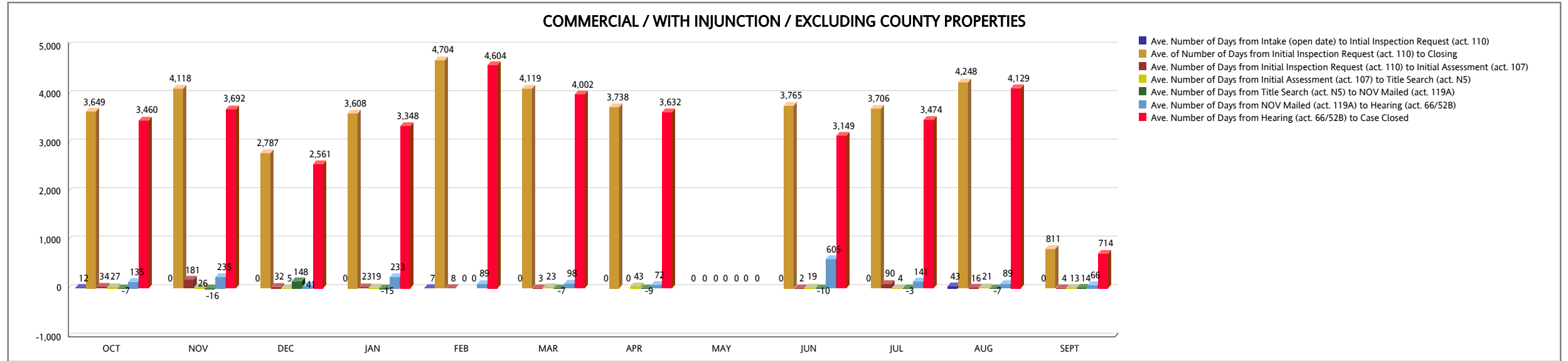


MIAMI-DADE COUNTY
DEPARTMENT OF REGULATORY AND ECONOMIC RESOURCES (RER)
UNSAFE STRUCTURES MEASURES - COMMERCIAL
From OCTOBER 2019 To SEPTEMBER 2020

COMMERCIAL WITH INJUNCTION (EXCLUDING COUNTY PROPERTIES)	OCT	NOV	DEC	JAN	FEB	MAR	APR	MAY	JUN	JUL	AUG	SEPT	YTD TOTAL
Ave. Number of Days from Intake (open date) to Intial Inspection Request (act. 110)	12	0	0	0	7	0	0	0	0	0	43	0	
Number of Cases from Intake (open date) to Intial Inspection Request (act. 110)	1	1	1	1	1	1	1	0	1	1	1	1	11
Ave. of Number of Days from Initial Inspection Request (act. 110) to Closing	3,649	4,118	2,787	3,608	4,704	4,119	3,738	0	3,765	3,706	4,248	811	
Number of Cases from Initial Inspection Request (act. 110) to Closing	1	1	1	1	1	1	1	0	1	1	1	1	11
Ave. Number of Days from Initial Inspection Request (act. 110) to Initial Assessment (act. 107)	34	181	32	23	8	3	0	0	2	90	16	4	
Number of Cases Closed from Initial Inspection Request (act. 110) to Initial Assessment (act. 107)	1	1	1	1	1	1	1	0	1	1	1	1	11
Ave. Number of Days from Initial Assessment (act. 107) to Title Search (act. N5)	27	26	5	19	0	23	43	0	19	4	21	13	
Number of Cases from Initial Assessment (act. 107) to Title Search (act. N5)	1	1	1	1	0	1	1	0	1	1	1	1	10
Ave. Number of Days from Title Search (act. N5) to NOV Mailed (act. 119A)	-7	-16	148	-15	0	-7	-9	0	-10	-3	-7	14	
Number of Cases from Title Search (act. N5) to NOV Mailed (act. 119A)	1	1	1	1	0	1	1	0	1	1	1	1	10
Ave. Number of Days from NOV Mailed (act. 119A) to Hearing (act. 66/52B)	135	235	41	233	89	98	72	0	605	141	89	66	
Number of Cases from NOV Mailed (act. 119A) to Hearing (act. 66/52B)	1	1	1	1	1	1	1	0	1	1	1	1	11
Ave. Number of Days from Hearing (act. 66/52B) to Case Closed	3,460	3,692	2,561	3,348	4,604	4,002	3,632	0	3,149	3,474	4,129	714	
Number of Cases from Hearing (act. 66/52B) to Case Closed	1	1	1	1	1	1	1	0	1	1	1	1	11

	Weighted Average
Ave. Number of Days from Intake (open date) to Intial Inspection Request (act. 110)	5.64
Ave. of Number of Days from Initial Inspection Request (act. 110) to Closing	3,568.45
Ave. Number of Days from Initial Inspection Request (act. 110) to Initial Assessment (act. 107)	35.73
Ave. Number of Days from Initial Assessment (act. 107) to Title Search (act. N5)	20.00
Ave. Number of Days from Title Search (act. N5) to NOV Mailed (act. 119A)	8.80
Ave. Number of Days from NOV Mailed (act. 119A) to Hearing (act. 66/52B)	164.00
Ave. Number of Days from Hearing (act. 66/52B) to Case Closed	3,342.27

MIAMI-DADE COUNTY
DEPARTMENT OF REGULATORY AND ECONOMIC RESOURCES (RER)
UNSAFE STRUCTURES MEASURES - COMMERCIAL
From OCTOBER 2019 To SEPTEMBER 2020



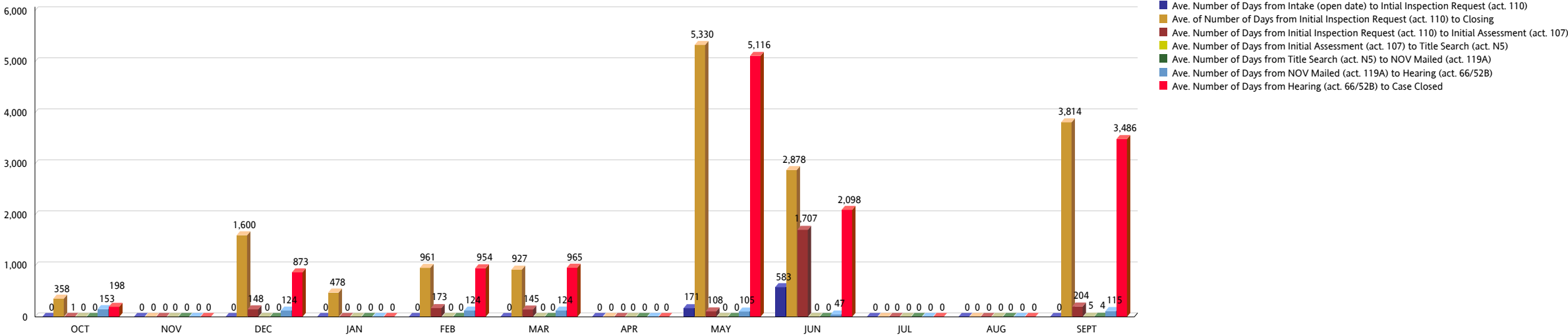
MIAMI-DADE COUNTY
DEPARTMENT OF REGULATORY AND ECONOMIC RESOURCES (RER)
UNSAFE STRUCTURES MEASURES - COMMERCIAL
From OCTOBER 2019 To SEPTEMBER 2020

COMMERCIAL NO INJUNCTION (COUNTY PROPERTIES)	OCT	NOV	DEC	JAN	FEB	MAR	APR	MAY	JUN	JUL	AUG	SEPT	YTD TOTAL
Ave. Number of Days from Intake (open date) to Intial Inspection Request (act. 110)	0	0	0	0	0	0	0	171	583	0	0	0	
Number of Cases from Intake (open date) to Intial Inspection Request (act. 110)	1	0	1	1	2	4	0	1	2	0	0	1	13
Ave. of Number of Days from Initial Inspection Request (act. 110) to Closing	358	0	1,600	478	961	927	0	5,330	2,878	0	0	3,814	
Number of Cases from Initial Inspection Request (act. 110) to Closing	1	0	1	1	2	4	0	1	2	0	0	1	13
Ave. Number of Days from Initial Inspection Request (act. 110) to Initial Assessment (act. 107)	1	0	148	0	173	145	0	108	1,707	0	0	204	
Number of Cases Closed from Initial Inspection Request (act. 110) to Initial Assessment (act. 107)	1	0	1	0	1	2	0	1	2	0	0	1	9
Ave. Number of Days from Initial Assessment (act. 107) to Title Search (act. N5)	0	0	0	0	0	0	0	0	0	0	0	5	
Number of Cases from Initial Assessment (act. 107) to Title Search (act. N5)	0	0	0	0	0	0	0	0	0	0	0	1	1
Ave. Number of Days from Title Search (act. N5) to NOV Mailed (act. 119A)	0	0	0	0	0	0	0	0	0	0	0	4	
Number of Cases from Title Search (act. N5) to NOV Mailed (act. 119A)	0	0	0	0	0	0	0	0	0	0	0	1	1
Ave. Number of Days from NOV Mailed (act. 119A) to Hearing (act. 66/52B)	153	0	124	0	124	124	0	105	47	0	0	115	
Number of Cases from NOV Mailed (act. 119A) to Hearing (act. 66/52B)	1	0	1	0	1	1	0	1	1	0	0	1	7
Ave. Number of Days from Hearing (act. 66/52B) to Case Closed	198	0	873	0	954	965	0	5,116	2,098	0	0	3,486	
Number of Cases from Hearing (act. 66/52B) to Case Closed	1	0	1	0	1	1	0	1	1	0	0	1	7

	Weighted Average
Ave. Number of Days from Intake (open date) to Intial Inspection Request (act. 110)	102.85
Ave. of Number of Days from Initial Inspection Request (act. 110) to Closing	1,766.62
Ave. Number of Days from Initial Inspection Request (act. 110) to Initial Assessment (act. 107)	482.00
Ave. Number of Days from Initial Assessment (act. 107) to Title Search (act. N5)	5.00
Ave. Number of Days from Title Search (act. N5) to NOV Mailed (act. 119A)	4.00
Ave. Number of Days from NOV Mailed (act. 119A) to Hearing (act. 66/52B)	113.14
Ave. Number of Days from Hearing (act. 66/52B) to Case Closed	1,955.71

MIAMI-DADE COUNTY
DEPARTMENT OF REGULATORY AND ECONOMIC RESOURCES (RER)
UNSAFE STRUCTURES MEASURES - COMMERCIAL
From OCTOBER 2019 To SEPTEMBER 2020

COMMERCIAL / NO INJUNCTION / COUNTY PROPERTIES



MIAMI-DADE COUNTY
DEPARTMENT OF REGULATORY AND ECONOMIC RESOURCES (RER)
UNSAFE STRUCTURES MEASURES - COMMERCIAL
From OCTOBER 2019 To SEPTEMBER 2020

COMMERCIAL WITH INJUNCTION (COUNTY PROPERTIES)	OCT	NOV	DEC	JAN	FEB	MAR	APR	MAY	JUN	JUL	AUG	SEPT	YTD TOTAL
Ave. Number of Days from Intake (open date) to Intial Inspection Request (act. 110)	0	0	0	0	0	0	0	0	0	0	0	0	
Number of Cases from Intake (open date) to Intial Inspection Request (act. 110)	0	0	0	0	0	0	0	0	0	0	0	0	0
Ave. of Number of Days from Initial Inspection Request (act. 110) to Closing	0	0	0	0	0	0	0	0	0	0	0	0	
Number of Cases from Initial Inspection Request (act. 110) to Closing	0	0	0	0	0	0	0	0	0	0	0	0	0
Ave. Number of Days from Initial Inspection Request (act. 110) to Initial Assessment (act. 107)	0	0	0	0	0	0	0	0	0	0	0	0	
Number of Cases Closed from Initial Inspection Request (act. 110) to Initial Assessment (act. 107)	0	0	0	0	0	0	0	0	0	0	0	0	0
Ave. Number of Days from Initial Assessment (act. 107) to Title Search (act. N5)	0	0	0	0	0	0	0	0	0	0	0	0	
Number of Cases from Initial Assessment (act. 107) to Title Search (act. N5)	0	0	0	0	0	0	0	0	0	0	0	0	0
Ave. Number of Days from Title Search (act. N5) to NOV Mailed (act. 119A)	0	0	0	0	0	0	0	0	0	0	0	0	
Number of Cases from Title Search (act. N5) to NOV Mailed (act. 119A)	0	0	0	0	0	0	0	0	0	0	0	0	0
Ave. Number of Days from NOV Mailed (act. 119A) to Hearing (act. 66/52B)	0	0	0	0	0	0	0	0	0	0	0	0	
Number of Cases from NOV Mailed (act. 119A) to Hearing (act. 66/52B)	0	0	0	0	0	0	0	0	0	0	0	0	0
Ave. Number of Days from Hearing (act. 66/52B) to Case Closed	0	0	0	0	0	0	0	0	0	0	0	0	
Number of Cases from Hearing (act. 66/52B) to Case Closed	0	0	0	0	0	0	0	0	0	0	0	0	0

	Weighted Average
Ave. Number of Days from Intake (open date) to Intial Inspection Request (act. 110)	0
Ave. of Number of Days from Initial Inspection Request (act. 110) to Closing	0
Ave. Number of Days from Initial Inspection Request (act. 110) to Initial Assessment (act. 107)	0
Ave. Number of Days from Initial Assessment (act. 107) to Title Search (act. N5)	0
Ave. Number of Days from Title Search (act. N5) to NOV Mailed (act. 119A)	0
Ave. Number of Days from NOV Mailed (act. 119A) to Hearing (act. 66/52B)	0
Ave. Number of Days from Hearing (act. 66/52B) to Case Closed	0

MIAMI-DADE COUNTY
DEPARTMENT OF REGULATORY AND ECONOMIC RESOURCES (RER)
UNSAFE STRUCTURES MEASURES - COMMERCIAL
 From OCTOBER 2019 To SEPTEMBER 2020

COMMERCIAL / WITH INJUNCTION / COUNTY PROPERTIES

