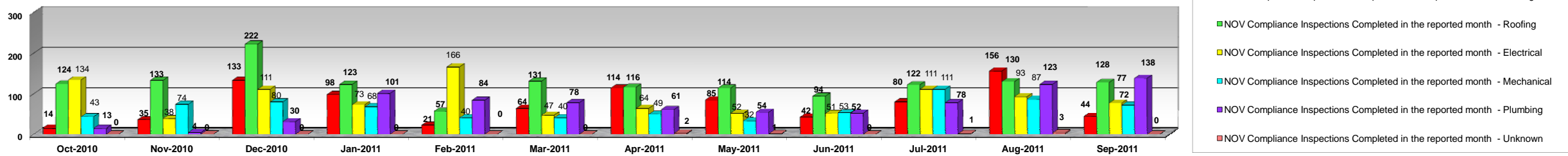


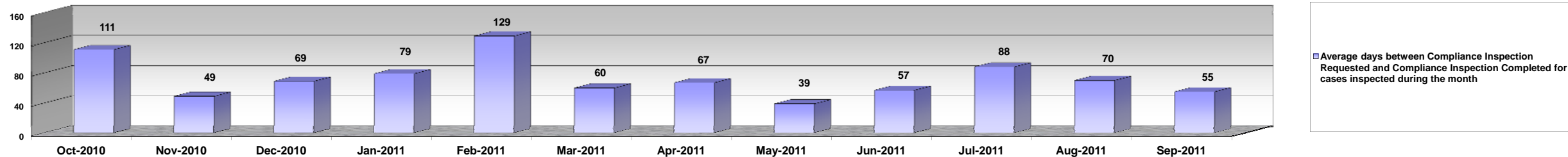
MIAMI-DADE COUNTY
BUILDING AND NEIGHBORHOOD COMPLIANCE DEPARTMENT
Business Plan
NOTICE OF VIOLATION (NOV) COMPLIANCE INSPECTIONS PERFORMED FOR BUILDING CODE VIOLATIONS
FY 2010-2011

	Oct-2010	Nov-2010	Dec-2010	Jan-2011	Feb-2011	Mar-2011	Apr-2011	May-2011	Jun-2011	Jul-2011	Aug-2011	Sep-2011
NOV Compliance Inspections Completed in the reported month - Building	14	35	133	98	21	64	114	85	42	80	156	44
NOV Compliance Inspections Completed in the reported month - Roofing	124	133	222	123	57	131	116	114	94	122	130	128
NOV Compliance Inspections Completed in the reported month - Electrical	134	38	111	73	166	47	64	52	51	111	93	77
NOV Compliance Inspections Completed in the reported month - Mechanical	43	74	80	68	40	40	49	32	53	111	87	72
NOV Compliance Inspections Completed in the reported month - Plumbing	13	4	30	101	84	78	61	54	52	78	123	138
NOV Compliance Inspections Completed in the reported month - Unsafe Structures *	2	11	81	41	8	17	13	8	4	2	3	3
NOV Compliance Inspections Completed in the reported month - Unknown	0	0	0	0	0	0	2	1	0	1	3	0
NOV Compliance Inspections Completed in the reported month	330	295	657	504	376	377	419	346	296	505	595	462
Average days between NOV Compliance Inspection Requested and NOV Compliance Inspection Completed for cases inspected during the month - Building	74	55	82	72	20	61	45	44	23	38	55	21
Average days between NOV Compliance Inspection Requested and NOV Compliance Inspection Completed for cases inspected during the month - Roofing	45	20	44	13	6	14	14	19	33	20	26	20
Average days between NOV Compliance Inspection Requested and NOV Compliance Inspection Completed for cases inspected during the month - Electrical	217	158	141	101	163	97	87	49	71	193	188	88
Average days between NOV Compliance Inspection Requested and NOV Compliance Inspection Completed for cases inspected during the month - Mechanical	10	31	33	23	14	15	101	39	17	76	28	23
Average days between NOV Compliance Inspection Requested and NOV Compliance Inspection Completed for cases inspected during the month - Plumbing	33	85	98	206	236	144	176	66	152	113	75	97
Average days between NOV Compliance Inspection Requested and NOV Compliance Inspection Completed for cases inspected during the month - Unsafe Structures *	1	109	46	39	42	33	11	9	81	9	2	113
Average days between NOV Compliance Inspection Requested and NOV Compliance Inspection Completed for cases inspected during the month - Unknown Trade	0	0	0	0	0	0	5	0	0	351	113	0
Average days between Compliance Inspection Requested and Compliance Inspection Completed for cases inspected during the month	111	49	69	79	129	60	67	39	57	88	70	55

NOV Compliance Inspections Performed



Average days between NOV Compliance Inspection Requested and NOV Compliance Inspection Completed for cases inspected during the month



* Unsafe Structure means cases assigned to Hearing Specialist due to ticket appealed process