

# MIAMI-DADE COUNTY

## BUILDING AND NEIGHBORHOOD COMPLIANCE DEPARTMENT

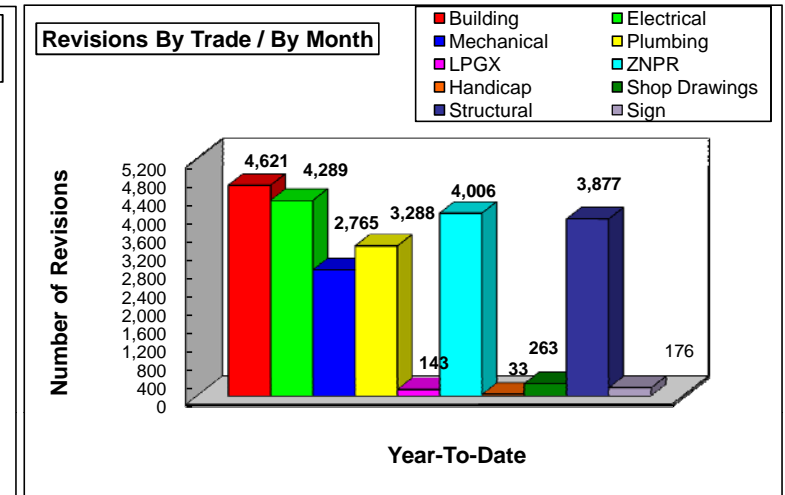
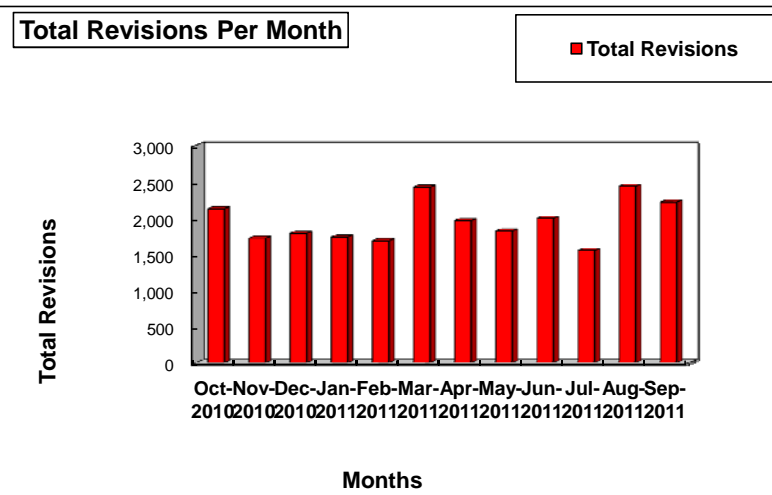
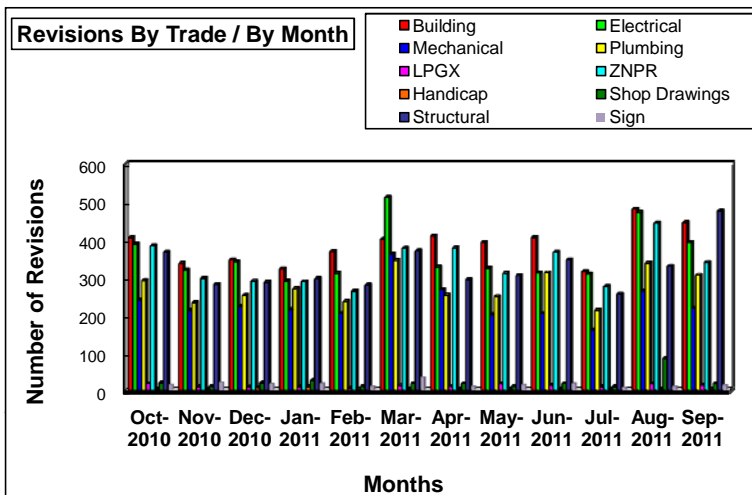
### PERMIT SERVICES DIVISION

#### PLANS PROCESSING - REVISIONS INITIAL REVIEW ONLY

\*\* Includes Dup Function \*\*

From 10/01/2010 to 9/30/2011

	Oct-2010	Nov-2010	Dec-2010	Jan-2011	Feb-2011	Mar-2011	Apr-2011	May-2011	Jun-2011	Jul-2011	Aug-2011	Sep-2011	TOTAL YTD	EOY PROJ*
<b>Building</b>	404	336	346	322	368	400	409	392	405	315	480	444	4,621	4,621
<b>Electrical</b>	388	318	341	290	309	511	326	324	311	308	471	392	4,289	4,289
<b>Mechanical</b>	240	212	223	214	204	361	267	200	204	159	264	217	2,765	2,765
<b>Plumbing</b>	291	232	251	269	235	344	252	248	312	212	337	305	3,288	3,288
<b>LPGX</b>	18	9	8	8	5	12	11	17	14	10	17	14	143	143
<b>ZNPR</b>	383	297	289	288	263	376	377	310	366	275	443	339	4,006	4,006
<b>Handicap</b>	1	3	7	9	2	1	0	0	3	1	4	2	33	33
<b>Shop Drawings</b>	20	11	20	25	11	18	18	11	18	10	84	17	263	263
<b>Structural</b>	366	281	286	295	278	369	293	304	346	255	329	475	3,877	3,877
<b>Sign</b>	14	20	16	17	9	33	9	14	17	6	9	12	176	176
<b>Total Per Month:</b>	<b>2,125</b>	<b>1,719</b>	<b>1,787</b>	<b>1,737</b>	<b>1,684</b>	<b>2,425</b>	<b>1,962</b>	<b>1,820</b>	<b>1,996</b>	<b>1,551</b>	<b>2,438</b>	<b>2,217</b>	<b>23,461</b>	<b>23,461</b>



Source : Enterprise Technology Services Department  
\*EOY PROJ assume remaining months are an average of YTD Total

Data Compiled and Report Produced by the Building and Neighborhood Compliance Department, Computer Services Section