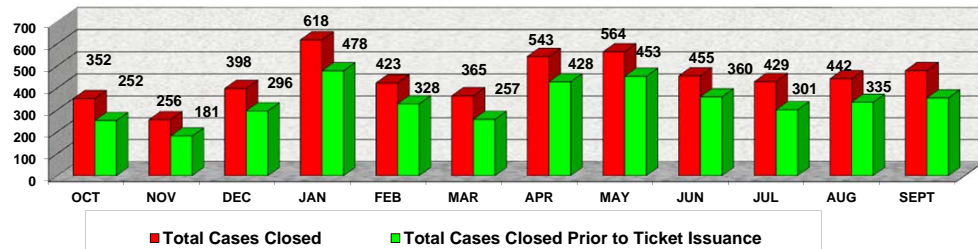


**MIAMI-DADE COUNTY**  
**DEPARTMENT OF REGULATORY AND ECONOMIC RESOURCES (RER)**  
**Business Plan**  
**BUILDING CODE VIOLATIONS CLOSED**  
**FY 2012-2013**

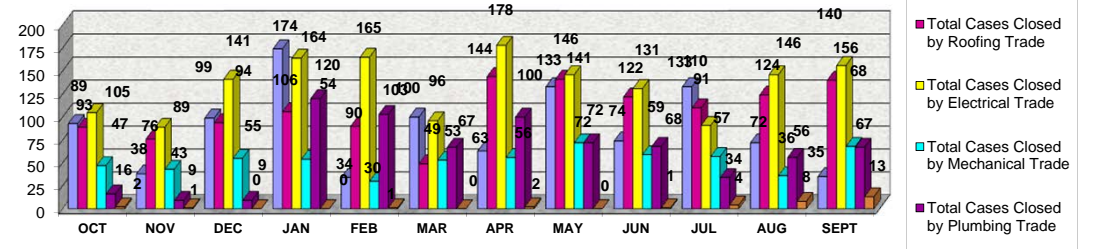
From October 2012 to September 2013

	OCT	NOV	DEC	JAN	FEB	MAR	APR	MAY	JUN	JUL	AUG	SEPT	TOTAL
Total Cases Closed by Building Trade	93	38	99	174	34	100	63	133	74	133	72	35	1048
Total Cases Closed by Roofing Trade	89	76	94	106	90	49	144	141	122	110	124	140	1285
Total Cases Closed by Electrical Trade	105	89	141	164	165	96	178	146	131	91	146	156	1608
Total Cases Closed by Mechanical Trade	47	43	55	54	30	53	56	72	59	57	36	68	630
Total Cases Closed by Plumbing Trade	16	9	9	120	103	67	100	72	68	34	56	67	721
Total Closed by Unknown (cases not assigned to an inspector)	2	1	0	0	1	0	2	0	1	4	8	13	32
<b>Total Cases Closed</b>	<b>352</b>	<b>256</b>	<b>398</b>	<b>618</b>	<b>423</b>	<b>365</b>	<b>543</b>	<b>564</b>	<b>455</b>	<b>429</b>	<b>442</b>	<b>479</b>	<b>5324</b>
Cases Closed Prior to Ticket Issuance - Building Trade	59	25	77	147	25	88	49	112	60	96	53	19	810
Cases Closed Prior to Ticket Issuance - Roofing Trade	61	58	75	74	74	32	112	112	99	72	91	98	958
Cases Closed Prior to Ticket Issuance - Electrical Trade	88	63	104	147	137	71	144	126	98	71	117	140	1306
Cases Closed Prior to Ticket Issuance - Mechanical Trade	33	28	32	37	20	32	41	51	47	41	23	47	432
Cases Closed Prior to Ticket Issuance - Plumbing Trade	9	6	8	73	71	34	80	52	55	17	43	39	487
Cases Closed by Unknown Prior to Ticket Issuance (cases not assigned to an inspector)	2	1	0	0	1	0	2	0	1	4	8	12	31
<b>Total Cases Closed Prior to Ticket Issuance</b>	<b>252</b>	<b>181</b>	<b>296</b>	<b>478</b>	<b>328</b>	<b>257</b>	<b>428</b>	<b>453</b>	<b>360</b>	<b>301</b>	<b>335</b>	<b>355</b>	<b>4024</b>
Percentage of Cases Closed Prior to Ticket - Building Trade	63%	66%	78%	84%	74%	88%	78%	84%	81%	72%	74%	54%	77%
Percentage of Cases Closed Prior to Ticket - Roofing Trade	69%	76%	80%	70%	82%	65%	78%	79%	81%	65%	73%	70%	75%
Percentage of Cases Closed Prior to Ticket - Electrical Trade	84%	71%	74%	90%	83%	74%	81%	86%	75%	78%	80%	90%	81%
Percentage of Cases Closed Prior to Ticket - Mechanical Trade	70%	65%	58%	69%	67%	60%	73%	71%	80%	72%	64%	69%	69%
Percentage of Cases Closed Prior to Ticket - Plumbing Trade	56%	67%	89%	61%	69%	51%	80%	72%	81%	50%	77%	58%	68%
Percentage of Cases Closed Prior to Ticket - Unknown Trade	100%	100%	0%	0%	100%	0%	100%	0%	100%	100%	100%	92%	97%
<b>Percentage of Cases Closed Prior to Ticket</b>	<b>71.59%</b>	<b>70.70%</b>	<b>74.37%</b>	<b>77.35%</b>	<b>77.54%</b>	<b>70.41%</b>	<b>78.82%</b>	<b>80.32%</b>	<b>79.12%</b>	<b>70.16%</b>	<b>75.79%</b>	<b>74.11%</b>	<b>75.58%</b>

TOTAL CASES CLOSED VS. TOTAL CASES CLOSED PRIOR TO TICKET ISSUANCE



TOTAL CASES CLOSED BY TRADE



PERCENTAGE OF CASES CLOSED PRIOR TO TICKET ISSUANCE (BY TRADE)

