

**MIAMI-DADE COUNTY**  
**DEPARTMENT OF REGULATORY AND ECONOMIC RESOURCES (RER)**  
**Inspections Rejection Rate**  
**Business Plan**  
**FY: 2015/2016**  
**From OCTOBER 1st, 2015 To SEPTEMBER 30th, 2016**

TRADE	OCT							NOV							DEC						
	*Total	Approved	Carryovers & Bad Weather	***Invalid Inspection Request	Insp. Cancelled	Rejected	% Rejection	*Total	Approved	Carryovers & Bad Weather	***Invalid Inspection Request	Insp. Cancelled	Rejected	% Rejection	*Total	Approved	Carryovers & Bad Weather	***Invalid Inspection Request	Insp. Cancelled	Rejected	% Rejection
BOILER	151	124	3	0	0	27	17.9	144	132	4	26	0	12	8.3	153	114	3	0	0	39	25.5
BUILDING	5,555	4,810	2	265	631	745	13.4	5,148	4,637	1	158	590	511	9.9	4,760	4,248	7	164	516	512	10.8
ELECTRICAL	3,363	2,882	3	137	351	481	14.3	3,159	2,666	32	229	294	493	15.6	3,068	2,640	5	144	285	428	14.0
MECHANICAL	1,330	1,162	0	80	169	168	12.6	1,181	1,037	0	77	153	144	12.2	1,240	1,104	0	73	149	136	11.0
PLUMBING	2,620	2,061	3	156	334	559	21.3	2,114	1,757	1	134	301	357	16.9	2,233	1,799	2	120	294	434	19.4
ROOFING	2,597	2,192	32	130	537	405	15.6	2,406	1,965	14	90	402	441	18.3	2,412	1,924	26	86	369	488	20.2
SIGN	180	154	0	16	24	26	14.4	168	143	0	8	27	25	14.9	212	190	6	26	36	22	10.4
ZIPS	82	74	0	14	7	8	9.8	98	84	0	8	4	14	14.3	78	71	0	9	3	7	9.0
<b>Total</b>	<b>15,878</b>	<b>13,459</b>	<b>43</b>	<b>798</b>	<b>2,053</b>	<b>2,419</b>	<b>15.2</b>	<b>14,418</b>	<b>12,421</b>	<b>52</b>	<b>730</b>	<b>1,771</b>	<b>1,997</b>	<b>13.9</b>	<b>14,156</b>	<b>12,090</b>	<b>49</b>	<b>622</b>	<b>1,652</b>	<b>2,066</b>	<b>14.6</b>

TRADE	JAN							FEB							MAR						
	*Total	Approved	Carryovers & Bad Weather	***Invalid Inspection Request	Insp. Cancelled	Rejected	% Rejection	*Total	Approved	Carryovers & Bad Weather	***Invalid Inspection Request	Insp. Cancelled	Rejected	% Rejection	*Total	Approved	Carryovers & Bad Weather	***Invalid Inspection Request	Insp. Cancelled	Rejected	% Rejection
BOILER	176	148	2	3	0	28	15.9	260	238	4	0	0	22	8.5	181	160	6	0	0	21	11.6
BUILDING	4,116	3,694	21	175	390	422	10.3	4,508	4,054	8	193	545	454	10.1	5,046	4,532	3	240	563	514	10.2
ELECTRICAL	2,580	2,242	6	131	208	338	13.1	3,121	2,668	5	145	340	453	14.5	3,443	2,970	0	176	374	473	13.7
MECHANICAL	1,207	1,089	2	79	114	118	9.8	1,162	1,085	0	49	141	77	6.6	1,212	1,120	1	51	172	92	7.6
PLUMBING	1,895	1,555	5	117	207	340	17.9	2,115	1,673	1	100	295	442	20.9	2,382	1,858	2	140	321	524	22.0
ROOFING	2,332	1,921	80	89	506	411	17.6	3,103	2,552	8	117	536	551	17.8	3,766	3,094	8	149	577	672	17.8
SIGN	195	181	0	26	18	14	7.2	218	194	0	14	43	24	11.0	226	207	0	26	32	19	8.4
ZIPS	56	52	0	12	5	4	7.1	94	84	0	10	6	10	10.6	117	102	0	16	7	15	12.8
<b>Total</b>	<b>12,557</b>	<b>10,882</b>	<b>116</b>	<b>632</b>	<b>1,448</b>	<b>1,675</b>	<b>13.3</b>	<b>14,581</b>	<b>12,548</b>	<b>26</b>	<b>628</b>	<b>1,906</b>	<b>2,033</b>	<b>13.9</b>	<b>16,373</b>	<b>14,043</b>	<b>20</b>	<b>798</b>	<b>2,046</b>	<b>2,330</b>	<b>14.2</b>

**MIAMI-DADE COUNTY**  
**DEPARTMENT OF REGULATORY AND ECONOMIC RESOURCES (RER)**  
**Inspections Rejection Rate**  
**Business Plan**  
**FY: 2015/2016**  
**From OCTOBER 1st, 2015 To SEPTEMBER 30th, 2016**

TRADE	APRIL							MAY							JUNE						
	*Total	Approved	Carryovers & Bad Weather	***Invalid Inspection Request	Insp. Cancelled	Rejected	% Rejection	*Total	Approved	Carryovers & Bad Weather	***Invalid Inspection Request	Insp. Cancelled	Rejected	% Rejection	*Total	Approved	Carryovers & Bad Weather	***Invalid Inspection Request	Insp. Cancelled	Rejected	% Rejection
BOILER	167	140	10	0	0	27	16.2	128	111	0	0	0	17	13.3	201	160	5	1	1	41	20.4
BUILDING	4,904	4,349	1	199	586	555	11.3	4,896	4,447	6	203	550	449	9.2	5,094	4,597	8	200	518	497	9.8
ELECTRICAL	3,386	2,922	0	143	310	464	13.7	3,259	2,693	2	155	317	566	17.4	3,435	2,851	1	163	299	584	17.0
MECHANICAL	1,282	1,167	0	90	126	115	9.0	1,221	1,100	0	63	138	121	9.9	1,136	1,032	0	69	119	104	9.2
PLUMBING	2,277	1,833	22	136	318	444	19.5	2,352	1,818	33	135	282	534	22.7	2,473	1,925	2	110	298	548	22.2
ROOFING	3,280	2,635	2	133	494	645	19.7	3,031	2,462	75	121	590	569	18.8	2,986	2,416	44	133	445	570	19.1
SIGN	327	288	0	25	46	39	11.9	159	140	0	18	21	19	11.9	189	160	0	30	22	29	15.3
ZIPPS	87	81	0	10	3	6	6.9	92	87	0	14	7	5	5.4	99	89	0	14	17	10	10.1
<b>Total</b>	<b>15,710</b>	<b>13,415</b>	<b>35</b>	<b>736</b>	<b>1,883</b>	<b>2,295</b>	<b>14.6</b>	<b>15,138</b>	<b>12,858</b>	<b>116</b>	<b>709</b>	<b>1,905</b>	<b>2,280</b>	<b>15.1</b>	<b>15,613</b>	<b>13,230</b>	<b>60</b>	<b>720</b>	<b>1,719</b>	<b>2,383</b>	<b>15.3</b>

TRADE	JUL							AUG							SEP						
	*Total	Approved	Carryovers & Bad Weather	***Invalid Inspection Request	Insp. Cancelled	Rejected	% Rejection	*Total	Approved	Carryovers & Bad Weather	***Invalid Inspection Request	Insp. Cancelled	Rejected	% Rejection	*Total	Approved	Carryovers & Bad Weather	***Invalid Inspection Request	Insp. Cancelled	Rejected	% Rejection
BOILER	215	190	0	0	0	25	11.6	172	150	5	0	0	22	12.8	100	85	3	0	0	15	15.0
BUILDING	4,707	4,234	4	187	682	473	10.0	5,270	4,737	16	167	680	533	10.1	5,003	4,498	13	192	644	505	10.1
ELECTRICAL	3,319	2,802	0	160	320	517	15.6	3,555	2,956	0	178	339	599	16.8	3,412	2,811	5	170	333	601	17.6
MECHANICAL	964	871	0	62	103	93	9.6	1,223	1,120	0	72	162	103	8.4	1,155	1,035	0	76	147	120	10.4
PLUMBING	2,093	1,682	0	99	258	411	19.6	2,461	1,928	1	102	318	533	21.7	2,496	1,959	1	100	289	537	21.5
ROOFING	2,703	2,251	21	77	468	452	16.7	2,790	2,314	15	104	556	476	17.1	2,823	2,384	30	105	379	439	15.6
SIGN	166	139	0	19	54	27	16.3	155	136	0	15	34	19	12.3	117	97	0	23	27	20	17.1
ZIPPS	87	84	0	11	4	3	3.4	95	84	0	12	2	11	11.6	105	99	0	12	5	6	5.7
<b>Total</b>	<b>14,254</b>	<b>12,253</b>	<b>25</b>	<b>615</b>	<b>1,889</b>	<b>2,001</b>	<b>14.0</b>	<b>15,721</b>	<b>13,425</b>	<b>37</b>	<b>650</b>	<b>2,091</b>	<b>2,296</b>	<b>14.6</b>	<b>15,211</b>	<b>12,968</b>	<b>52</b>	<b>678</b>	<b>1,824</b>	<b>2,243</b>	<b>14.7</b>

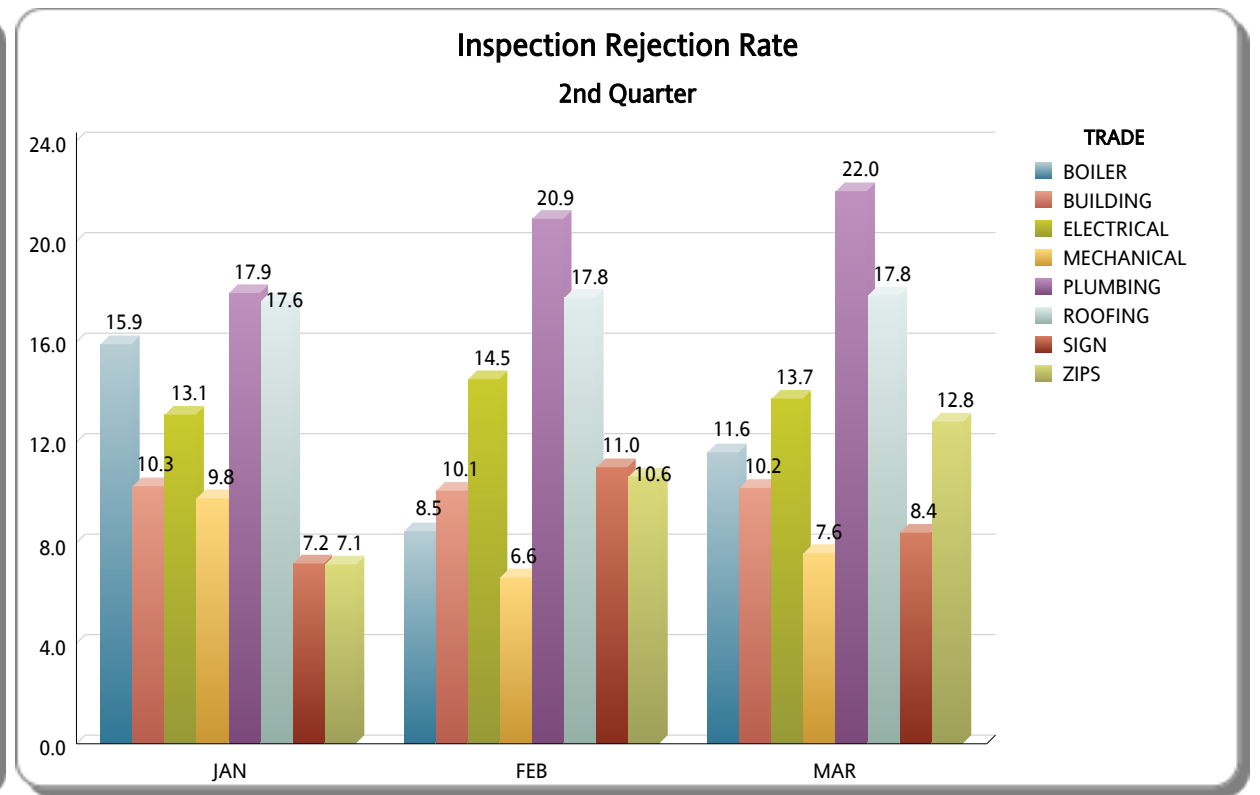
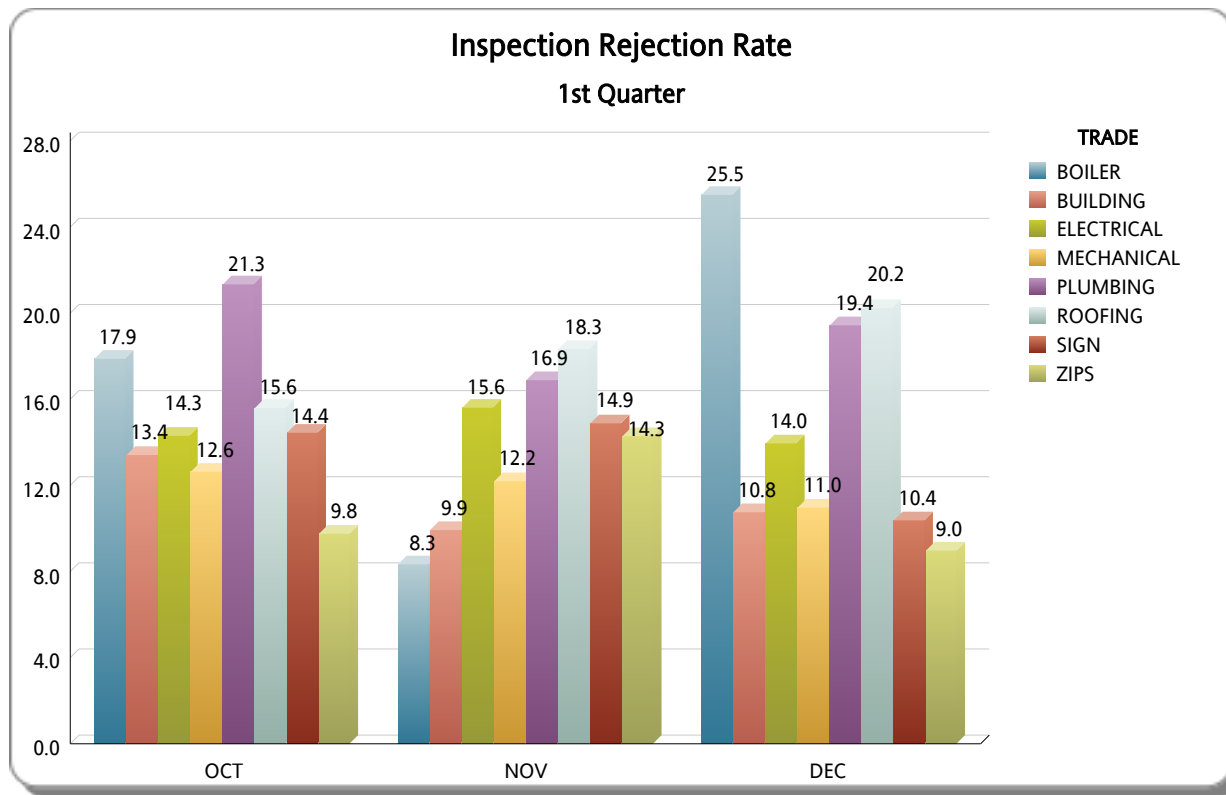
MIAMI-DADE COUNTY  
DEPARTMENT OF REGULATORY AND ECONOMIC RESOURCES (RER)

Inspections Rejection Rate

Business Plan

FY: 2015/2016

From OCTOBER 1st, 2015 To SEPTEMBER 30th, 2016



**MIAMI-DADE COUNTY**  
**DEPARTMENT OF REGULATORY AND ECONOMIC RESOURCES (RER)**  
**Inspections Rejection Rate**  
**Business Plan**  
 FY: 2015/2016  
 From OCTOBER 1st, 2015 To SEPTEMBER 30th, 2016

