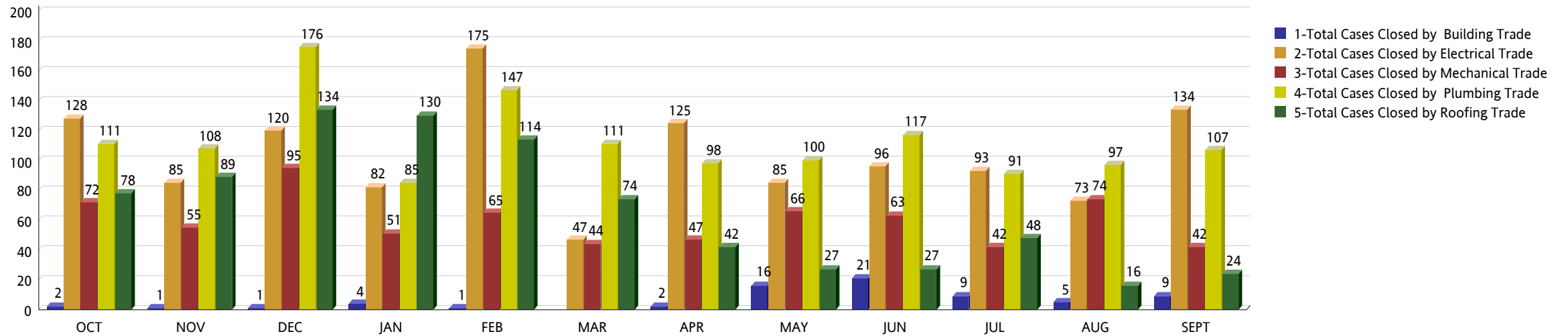


MIAMI-DADE COUNTY
DEPARTMENT OF REGULATORY AND ECONOMIC RESOURCES (RER)
 Business Plan
BUILDING CODE VIOLATIONS CLOSED
 From OCTOBER 2015 To SEPTEMBER 2016

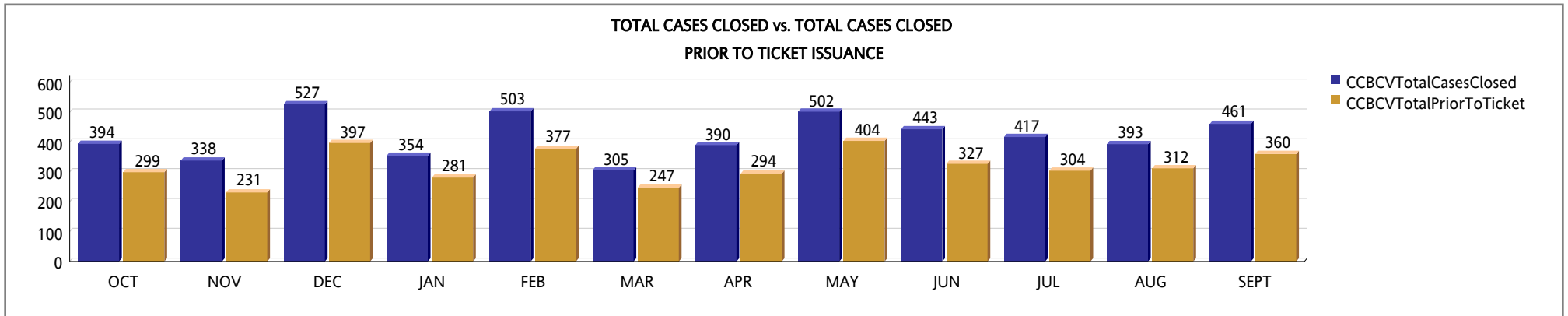
	OCT	NOV	DEC	JAN	FEB	MAR	APR	MAY	JUN	JUL	AUG	SEPT	Total
Total Cases Closed by Building Trade	2	1	1	4	1	0	2	16	21	9	5	9	71
Total Cases Closed by Electrical Trade	128	85	120	82	175	47	125	85	96	93	73	134	1,243
Total Cases Closed by Mechanical Trade	72	55	95	51	65	44	47	66	63	42	74	42	716
Total Cases Closed by Plumbing Trade	111	108	176	85	147	111	98	100	117	91	97	107	1,348
Total Cases Closed by Roofing Trade	78	89	134	130	114	74	42	27	27	48	16	24	803
Total Cases Closed by Unknown Trade (cases not assigned to an Inspector)	3	0	1	2	1	29	76	208	119	134	128	145	846
Total Cases Closed	394	338	527	354	503	305	390	502	443	417	393	461	5,027

TOTAL CASES CLOSED BY TRADE



MIAMI-DADE COUNTY
DEPARTMENT OF REGULATORY AND ECONOMIC RESOURCES (RER)
Business Plan
BUILDING CODE VIOLATIONS CLOSED
From OCTOBER 2015 To SEPTEMBER 2016

	OCT	NOV	DEC	JAN	FEB	MAR	APR	MAY	JUN	JUL	AUG	SEPT	Total
Cases Closed Prior to Ticket Issuance - Building Trade	2	0	1	4	1	0	2	7	9	3	2	7	38
Cases Closed Prior to Ticket Issuance - Electrical Trade	88	48	83	56	110	30	97	56	72	61	53	93	847
Cases Closed Prior to Ticket Issuance - Mechanical Trade	57	29	75	42	51	37	38	55	55	32	64	37	572
Cases Closed Prior to Ticket Issuance - Plumbing Trade	89	87	141	73	117	91	56	85	89	62	75	87	1,052
Cases Closed Prior to Ticket Issuance - Roofing Trade	60	67	96	104	97	64	32	17	11	28	4	10	590
Cases Closed Prior to Ticket Issuance (cases not assigned to an Inspector)	3	0	1	2	1	25	69	184	91	118	114	126	734
Total Cases Closed Prior to Ticket Issuance	299	231	397	281	377	247	294	404	327	304	312	360	3,833



MIAMI-DADE COUNTY
DEPARTMENT OF REGULATORY AND ECONOMIC RESOURCES (RER)
Business Plan
BUILDING CODE VIOLATIONS CLOSED
From OCTOBER 2015 To SEPTEMBER 2016

	OCT	NOV	DEC	JAN	FEB	MAR	APR	MAY	JUN	JUL	AUG	SEPT	Total
Percentage of Cases Closed Prior to Ticket Issuance - Building Trade	100%	0%	100%	100%	100%	0%	100%	44%	43%	33%	40%	78%	54%
Percentage of Cases Closed Prior to Ticket Issuance - Electrical Trade	69%	56%	69%	68%	63%	64%	78%	66%	75%	66%	73%	69%	68%
percentage of Cases Closed Prior to Ticket Issuance - Mechanical Trade	79%	53%	79%	82%	78%	84%	81%	83%	87%	76%	86%	88%	80%
Percentage of Cases Closed Prior to Ticket Issuance - Plumbing Trade	80%	81%	80%	86%	80%	82%	57%	85%	76%	68%	77%	81%	78%
Percentage of Cases Closed Prior to Ticket Issuance - Roofing Trade	77%	75%	72%	80%	85%	86%	76%	63%	41%	58%	25%	42%	73%
Percentage of Cases Closed Prior to Ticket Issuance - Unknown Trade	100%	0%	100%	100%	100%	86%	91%	88%	76%	88%	89%	87%	87%
Percentage of Cases Closed Prior to Ticket	76%	68%	75%	79%	75%	81%	75%	80%	74%	73%	79%	78%	76%

