

MIAMI-DADE COUNTY
DEPARTMENT OF REGULATORY AND ECONOMIC RESOURCES (RER)
PLANS PROCESSING - REVISIONS
Reworks Only
Business Plan
**Includes Mplantrk and Fastrack only*
FY: 2015/2016
From OCTOBER 1st, 2015 To SEPTEMBER 30th, 2016

TRADE	OCT						NOV						DEC					
	TOTAL	APPROVED	REJECTED	Approved as Noted	Not Applicable	% REJECTION	TOTAL	APPROVED	REJECTED	Approved as Noted	Not Applicable	% REJECTION	TOTAL	APPROVED	REJECTED	Approved as Noted	Not Applicable	% REJECTION
Building	111	95	7	4	5	6%	85	65	17	2	1	20%	89	82	2	5	0	2%
Derm	81	58	17	0	6	21%	57	48	9	0	0	16%	70	54	16	0	0	23%
Electrical	98	76	6	14	2	6%	70	49	8	13	0	11%	69	49	9	9	2	13%
Gas	8	6	1	1	0	12%	6	4	0	1	1	0%	0	0	0	0	0	0%
Mechanical	79	58	3	11	7	4%	51	32	4	12	3	8%	52	31	7	11	3	13%
Plumbing	117	84	14	13	6	12%	78	59	9	8	2	12%	116	85	14	14	3	12%
Public Works	3	1	1	0	1	33%	9	3	3	0	3	33%	13	8	3	0	2	23%
Shop Drawing	4	2	1	0	1	25%	3	1	0	0	2	0%	1	0	0	0	1	0%
Sign	3	3	0	0	0	0%	0	0	0	0	0	0%	3	2	1	0	0	33%
Structural	90	76	4	9	1	4%	76	59	6	4	7	8%	76	57	10	8	1	13%
Zoning	55	49	6	0	0	11%	40	29	9	0	2	22%	47	37	8	0	2	17%
TOTAL: RER TOTAL	649	508	60	52	29	9%	475	349	65	40	21	14%	536	405	70	47	14	13%
Fire	65	49	11	0	5	17%	58	43	10	1	4	17%	78	58	16	0	4	21%
TOTAL: OTHER	65	49	11	0	5	17%	58	43	10	1	4	17%	78	58	16	0	4	21%
Total	714	557	71	52	34	10%	533	392	75	41	25	14%	614	463	86	47	18	14%

MIAMI-DADE COUNTY
DEPARTMENT OF REGULATORY AND ECONOMIC RESOURCES (RER)
PLANS PROCESSING - REVISIONS
Reworks Only
Business Plan
**Includes Mplantrk and Fastrack only*
FY: 2015/2016
From OCTOBER 1st, 2015 To SEPTEMBER 30th, 2016

TRADE	JAN						FEB						MAR					
	TOTAL	APPROVED	REJECTED	Approved as Noted	Not Applicable	% REJECTION	TOTAL	APPROVED	REJECTED	Approved as Noted	Not Applicable	% REJECTION	TOTAL	APPROVED	REJECTED	Approved as Noted	Not Applicable	% REJECTION
Building	84	64	10	7	3	12%	98	79	12	5	2	12%	139	106	29	4	0	21%
Derm	68	38	29	0	1	43%	66	47	19	0	0	29%	83	55	27	0	1	33%
Electrical	99	66	18	10	5	18%	90	61	11	17	1	12%	103	67	14	17	5	14%
Gas	1	0	0	1	0	0%	10	7	2	0	1	20%	3	2	1	0	0	33%
Mechanical	58	42	3	7	6	5%	63	49	2	9	3	3%	74	46	5	13	10	7%
Plumbing	84	61	6	13	4	7%	99	68	7	18	6	7%	109	77	9	17	6	8%
Public Works	14	6	2	0	6	14%	8	5	1	0	2	12%	11	8	2	0	1	18%
Shop Drawing	0	0	0	0	0	0%	3	1	0	1	1	0%	0	0	0	0	0	0%
Sign	2	2	0	0	0	0%	1	1	0	0	0	0%	6	2	4	0	0	67%
Structural	79	62	11	4	2	14%	106	82	17	5	2	16%	113	90	10	10	3	9%
Zoning	47	35	10	0	2	21%	40	28	5	0	7	12%	58	44	10	0	4	17%
TOTAL RER DEPT OVERALL	536	376	89	42	29	17%	584	428	76	55	25	13%	699	497	111	61	30	16%
Fire	80	55	18	0	7	22%	52	42	10	0	0	19%	56	39	14	0	3	25%
TOTAL OTHER	80	55	18	0	7	22%	52	42	10	0	0	19%	56	39	14	0	3	25%
Total	616	431	107	42	36	17%	636	470	86	55	25	14%	755	536	125	61	33	17%

MIAMI-DADE COUNTY
DEPARTMENT OF REGULATORY AND ECONOMIC RESOURCES (RER)
PLANS PROCESSING - REVISIONS
Reworks Only
Business Plan
**Includes Mplantrk and Fastrack only*
FY: 2015/2016
From OCTOBER 1st, 2015 To SEPTEMBER 30th, 2016

TRADE	APR						MAY						JUNE					
	TOTAL	APPROVED	REJECTED	Approved as Noted	Not Applicable	% REJECTION	TOTAL	APPROVED	REJECTED	Approved as Noted	Not Applicable	% REJECTION	TOTAL	APPROVED	REJECTED	Approved as Noted	Not Applicable	% REJECTION
Building	124	104	16	2	2	13%	121	102	13	4	2	11%	133	96	27	5	5	20%
Derm	63	54	9	0	0	14%	89	66	21	0	2	24%	70	54	14	0	2	20%
Electrical	89	69	12	8	0	13%	104	78	11	13	2	11%	118	89	10	18	1	8%
Gas	5	4	0	1	0	0%	12	8	2	2	0	17%	5	4	0	1	0	0%
Mechanical	59	37	0	16	6	0%	69	51	2	15	1	3%	72	42	1	19	10	1%
Plumbing	117	78	11	20	8	9%	123	95	5	22	1	4%	136	99	14	18	5	10%
Public Works	4	3	0	0	1	0%	13	7	3	0	3	23%	8	4	0	0	4	0%
Public Works Concurrency	1	0	0	0	1	0%	4	1	0	0	3	0%	2	0	0	0	2	0%
Shop Drawing	0	0	0	0	0	0%	0	0	0	0	0	0%	1	1	0	0	0	0%
Sign	4	4	0	0	0	0%	0	0	0	0	0	0%	1	1	0	0	0	0%
Structural	114	88	11	5	10	10%	82	73	3	3	3	4%	98	80	12	5	1	12%
Zoning	86	66	15	0	5	17%	50	36	10	0	4	20%	80	52	25	0	3	31%
TOTAL RER DEPT OVERALL	666	507	74	52	33	11%	667	517	70	59	21	10%	724	522	103	66	33	14%
Fire	65	58	7	0	0	11%	75	56	19	0	0	25%	68	50	14	0	4	21%
TOTAL OTHER	65	58	7	0	0	11%	75	56	19	0	0	25%	68	50	14	0	4	21%
Total	731	565	81	52	33	11%	742	573	89	59	21	12%	792	572	117	66	37	15%

MIAMI-DADE COUNTY
DEPARTMENT OF REGULATORY AND ECONOMIC RESOURCES (RER)
PLANS PROCESSING - REVISIONS
Reworks Only
Business Plan
**Includes Mplantrk and Fastrack only*
FY: 2015/2016
From OCTOBER 1st, 2015 To SEPTEMBER 30th, 2016

TRADE	JULY						AUG						SEPT					
	TOTAL	APPROVED	REJECTED	Approved as Noted	Not Applicable	% REJECTION	TOTAL	APPROVED	REJECTED	Approved as Noted	Not Applicable	% REJECTION	TOTAL	APPROVED	REJECTED	Approved as Noted	Not Applicable	% REJECTION
Building	105	83	17	3	2	16%	116	82	24	6	4	21%	106	85	16	3	2	15%
Derm	57	42	15	0	0	26%	73	54	19	0	0	26%	61	40	19	0	2	31%
Electrical	77	59	9	7	2	12%	118	84	11	19	4	9%	102	83	6	12	1	6%
Gas	8	4	2	1	1	25%	12	8	3	1	0	25%	8	5	0	3	0	0%
Mechanical	54	36	4	5	9	7%	79	48	2	21	8	3%	59	35	5	15	4	8%
Plumbing	80	58	7	12	3	9%	109	81	12	14	2	11%	106	77	13	14	2	12%
Public Works	9	3	4	0	2	44%	16	10	3	0	3	19%	6	3	2	0	1	33%
Public Works Concurrency	1	1	0	0	0	0%	0	0	0	0	0	0%	0	0	0	0	0	0%
Shop Drawing	6	3	1	0	2	17%	2	1	0	0	1	0%	0	0	0	0	0	0%
Sign	0	0	0	0	0	0%	0	0	0	0	0	0%	1	1	0	0	0	0%
Structural	68	51	11	5	1	16%	103	81	13	8	1	13%	84	65	12	4	3	14%
Zoning	47	34	5	0	8	11%	64	44	15	0	5	23%	58	45	12	0	1	21%
TOTAL RER DEPT OVERALL	512	374	75	33	30	15%	692	493	102	69	28	15%	591	439	85	51	16	14%
Fire	46	34	11	0	1	24%	90	41	20	0	29	22%	79	60	14	0	5	18%
TOTAL OTHER	46	34	11	0	1	24%	90	41	20	0	29	22%	79	60	14	0	5	18%
Total	558	408	86	33	31	15%	782	534	122	69	57	16%	670	499	99	51	21	15%

MIAMI-DADE COUNTY
DEPARTMENT OF REGULATORY AND ECONOMIC RESOURCES (RER)

PLANS PROCESSING - REVISIONS

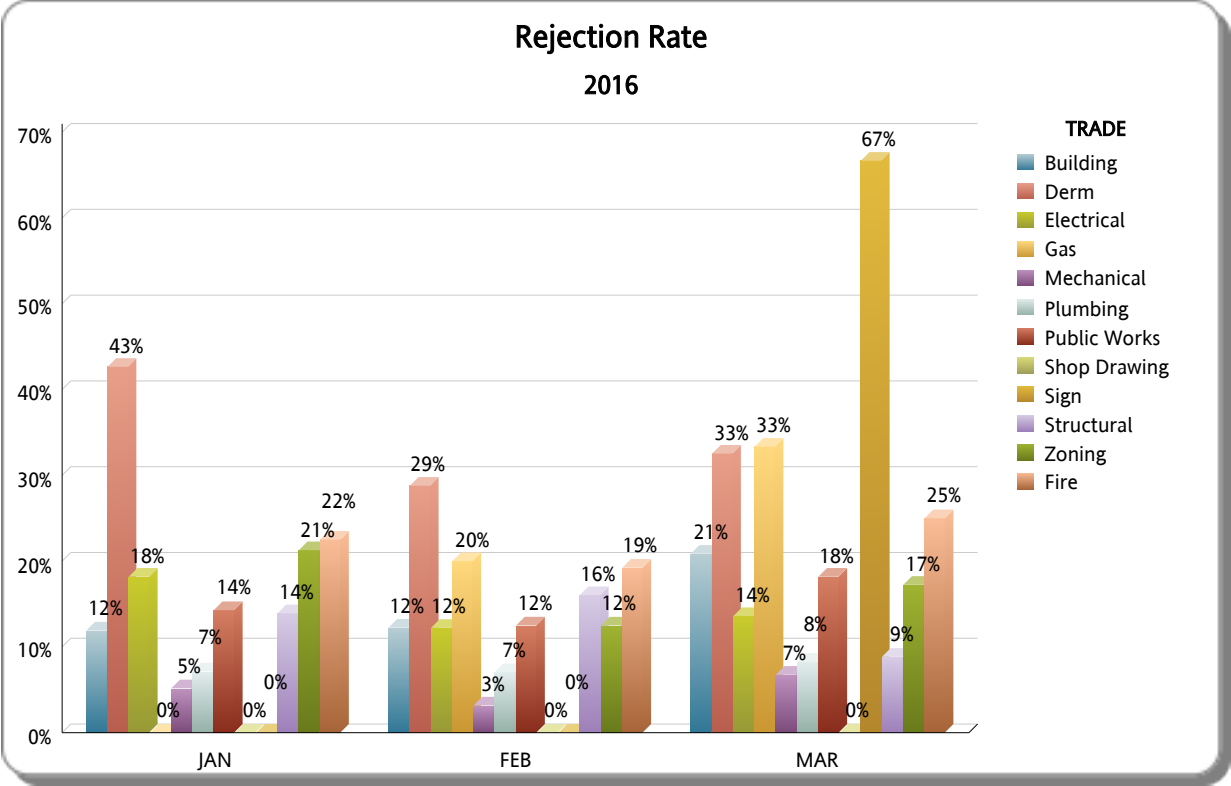
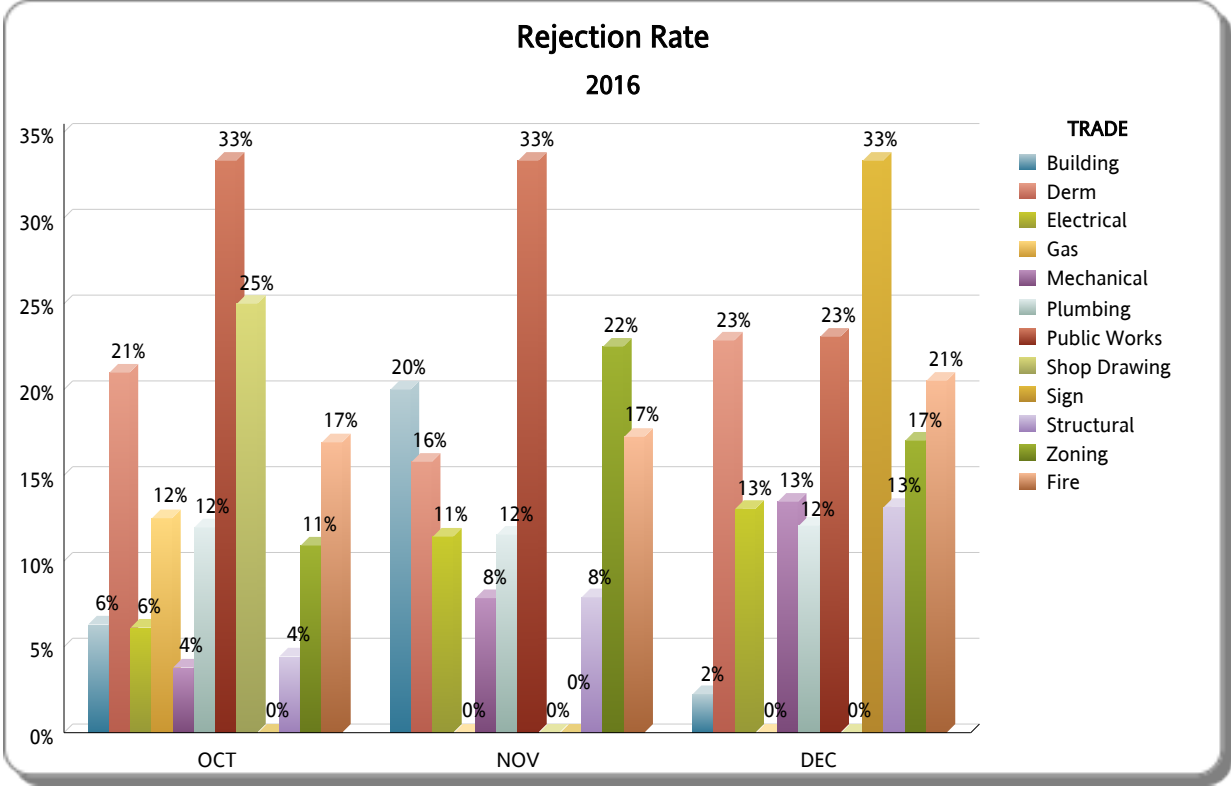
Reworks Only

Business Plan

**Includes Mplantrk and Fastrack only*

FY: 2015/2016

From OCTOBER 1st, 2015 To SEPTEMBER 30th, 2016



MIAMI-DADE COUNTY
DEPARTMENT OF REGULATORY AND ECONOMIC RESOURCES (RER)
PLANS PROCESSING - REVISIONS
Reworks Only
Business Plan
**Includes Mplantrk and Fastrack only*
FY: 2015/2016
From OCTOBER 1st, 2015 To SEPTEMBER 30th, 2016

