

MIAMI-DADE COUNTY
DEPARTMENT OF REGULATORY AND ECONOMIC RESOURCES (RER)
Inspections Rejection Rate
Business Plan
FY: 2017/2018
From OCTOBER 1st, 2017 To SEPTEMBER 30th, 2018

TRADE	OCT							NOV							DEC						
	*Total	Approved	Carryovers & Bad Weather	***Invalid Inspection Request	Insp. Cancelled	Rejected	% Rejection	*Total	Approved	Carryovers & Bad Weather	***Invalid Inspection Request	Insp. Cancelled	Rejected	% Rejection	*Total	Approved	Carryovers & Bad Weather	***Invalid Inspection Request	Insp. Cancelled	Rejected	% Rejection
BOILER	138	128	5	29	0	10	7.2	174	135	0	33	1	39	22.4	146	114	0	0	0	32	21.9
BUILDING	4,935	4,329	5	292	608	606	12.3	5,084	4,449	6	235	523	635	12.5	4,750	4,201	0	222	518	549	11.6
ELECTRICAL	3,112	2,621	4	151	292	491	15.8	3,167	2,692	1	213	260	475	15.0	3,172	2,585	0	146	262	587	18.5
MECHANICAL	1,190	1,100	1	84	165	90	7.6	1,195	1,109	0	74	164	86	7.2	1,098	1,011	0	49	108	87	7.9
PLUMBING	2,170	1,663	0	109	346	507	23.4	2,209	1,710	0	90	276	499	22.6	2,161	1,637	0	85	296	524	24.2
ROOFING	2,838	2,275	41	159	555	563	19.8	3,724	3,007	28	225	619	717	19.3	4,756	4,097	6	154	571	659	13.9
SIGN	199	181	0	23	33	18	9.0	121	99	0	28	23	22	18.2	138	109	0	3	18	29	21.0
ZIPS	47	37	0	1	4	10	21.3	71	64	0	17	8	7	9.9	47	46	0	3	3	1	2.1
Total	14,629	12,334	56	848	2,003	2,295	15.7	15,745	13,265	35	915	1,874	2,480	15.8	16,268	13,800	6	662	1,776	2,468	15.2

TRADE	JAN							FEB							MAR						
	*Total	Approved	Carryovers & Bad Weather	***Invalid Inspection Request	Insp. Cancelled	Rejected	% Rejection	*Total	Approved	Carryovers & Bad Weather	***Invalid Inspection Request	Insp. Cancelled	Rejected	% Rejection	*Total	Approved	Carryovers & Bad Weather	***Invalid Inspection Request	Insp. Cancelled	Rejected	% Rejection
BOILER	178	155	3	3	0	23	12.9	260	213	11	2	0	47	18.1	208	170	3	0	0	38	18.3
BUILDING	4,747	4,218	1	249	463	529	11.1	4,736	4,218	2	289	601	518	10.9	5,551	4,941	1	305	717	610	11.0
ELECTRICAL	3,184	2,649	0	168	269	535	16.8	3,361	2,772	0	163	274	589	17.5	3,650	3,042	2	181	257	608	16.7
MECHANICAL	1,038	959	0	59	139	79	7.6	981	901	0	51	147	80	8.2	1,241	1,149	0	79	155	92	7.4
PLUMBING	2,125	1,626	0	72	282	499	23.5	2,343	1,794	0	101	342	549	23.4	2,817	2,234	0	108	330	583	20.7
ROOFING	5,055	4,277	21	190	665	778	15.4	6,107	5,198	44	291	725	909	14.9	7,105	6,093	118	397	886	1,012	14.2
SIGN	210	165	0	22	38	45	21.4	186	162	0	15	19	24	12.9	284	240	0	15	33	44	15.5
ZIPS	46	40	0	13	3	6	13.0	66	59	0	18	5	7	10.6	91	81	0	11	2	10	11.0
Total	16,583	14,089	25	776	1,859	2,494	15.0	18,040	15,317	57	930	2,113	2,723	15.1	20,947	17,950	124	1,096	2,380	2,997	14.3

MIAMI-DADE COUNTY
DEPARTMENT OF REGULATORY AND ECONOMIC RESOURCES (RER)
Inspections Rejection Rate
Business Plan
FY: 2017/2018
From OCTOBER 1st, 2017 To SEPTEMBER 30th, 2018

TRADE	APRIL							MAY							JUNE						
	*Total	Approved	Carryovers & Bad Weather	***Invalid Inspection Request	Insp. Cancelled	Rejected	% Rejection	*Total	Approved	Carryovers & Bad Weather	***Invalid Inspection Request	Insp. Cancelled	Rejected	% Rejection	*Total	Approved	Carryovers & Bad Weather	***Invalid Inspection Request	Insp. Cancelled	Rejected	% Rejection
BOILER	174	159	1	0	0	15	8.6	139	111	1	1	0	28	20.1	198	173	2	1	0	25	12.6
BUILDING	5,021	4,471	5	304	682	550	11.0	5,649	4,974	6	300	693	675	11.9	5,445	4,734	23	349	648	711	13.1
ELECTRICAL	3,487	2,897	0	142	248	590	16.9	3,534	2,976	3	151	315	558	15.8	3,622	2,949	6	116	280	673	18.6
MECHANICAL	1,094	1,005	0	62	138	89	8.1	1,122	1,028	2	64	128	94	8.4	1,049	958	0	54	126	91	8.7
PLUMBING	2,568	2,016	0	88	346	552	21.5	2,614	2,080	0	125	317	534	20.4	2,613	2,085	0	85	304	528	20.2
ROOFING	6,294	5,354	92	361	807	940	14.9	5,702	4,793	142	333	954	909	15.9	5,783	4,774	142	369	881	1,009	17.4
SIGN	208	177	0	15	45	31	14.9	253	236	0	21	60	17	6.7	199	144	1	15	15	55	27.6
ZIPS	79	75	0	16	7	4	5.1	76	68	0	13	5	8	10.5	74	63	0	9	5	11	14.9
Total	18,925	16,154	98	988	2,273	2,771	14.6	19,089	16,266	154	1,008	2,472	2,823	14.8	18,983	15,880	174	998	2,259	3,103	16.3

TRADE	JUL							AUG							SEP						
	*Total	Approved	Carryovers & Bad Weather	***Invalid Inspection Request	Insp. Cancelled	Rejected	% Rejection	*Total	Approved	Carryovers & Bad Weather	***Invalid Inspection Request	Insp. Cancelled	Rejected	% Rejection	*Total	Approved	Carryovers & Bad Weather	***Invalid Inspection Request	Insp. Cancelled	Rejected	% Rejection
BOILER	220	190	0	2	0	30	13.6	178	150	1	0	0	28	15.7	96	78	0	0	0	18	18.8
BUILDING	5,789	5,012	15	335	745	777	13.4	6,214	5,336	11	372	748	878	14.1	5,354	4,686	13	313	602	668	12.5
ELECTRICAL	3,557	2,867	10	158	280	690	19.4	4,060	3,390	3	150	323	670	16.5	3,316	2,768	6	125	275	548	16.5
MECHANICAL	1,143	1,013	0	76	152	130	11.4	1,314	1,193	0	85	162	121	9.2	1,067	937	1	64	132	130	12.2
PLUMBING	2,614	2,137	0	99	336	477	18.2	2,835	2,299	0	154	359	536	18.9	2,353	1,878	0	119	301	475	20.2
ROOFING	6,015	5,025	169	395	895	990	16.5	6,863	5,785	68	384	880	1,078	15.7	5,905	4,825	38	318	825	1,080	18.3
SIGN	306	243	6	38	73	63	20.6	230	200	1	17	30	30	13.0	137	115	0	19	24	22	16.1
ZIPS	74	66	0	15	5	8	10.8	83	74	0	11	2	9	10.8	87	76	0	10	9	11	12.6
Total	19,718	16,553	200	1,118	2,486	3,165	16.1	21,777	18,427	84	1,173	2,504	3,350	15.4	18,315	15,363	58	968	2,168	2,952	16.1

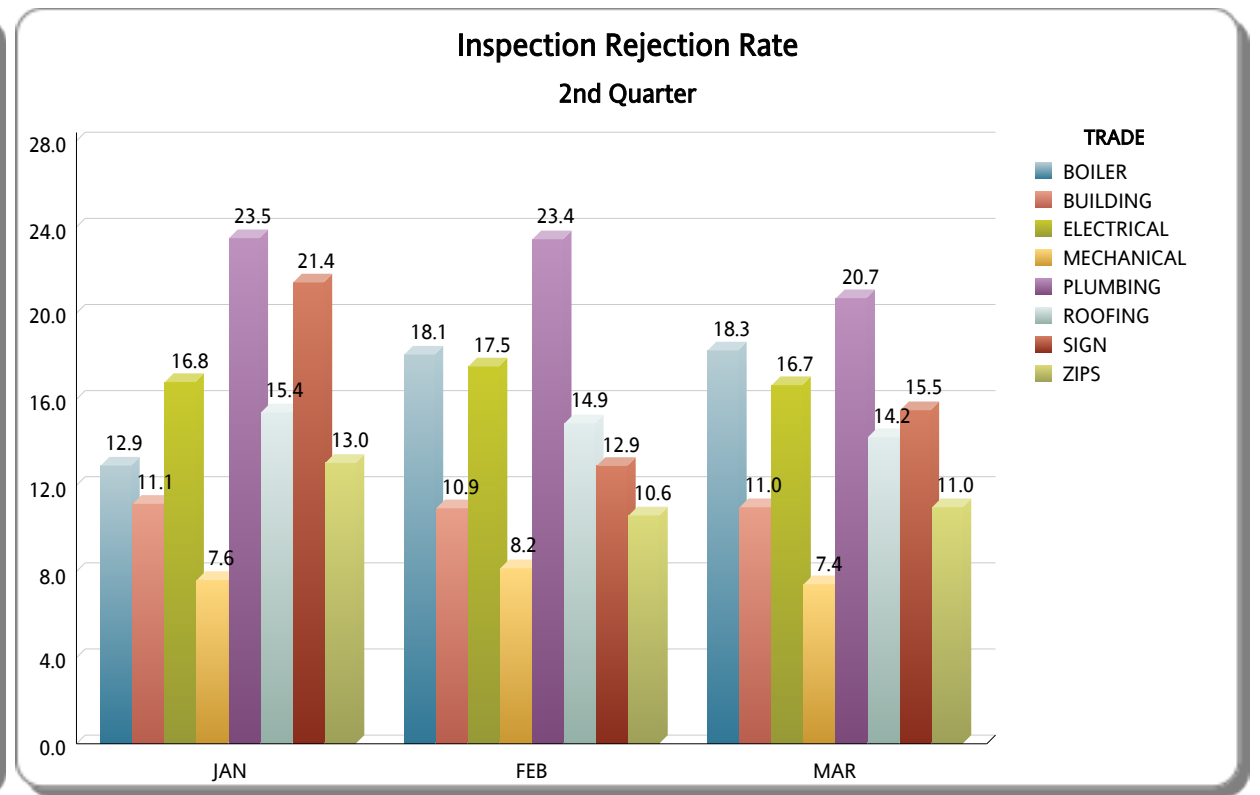
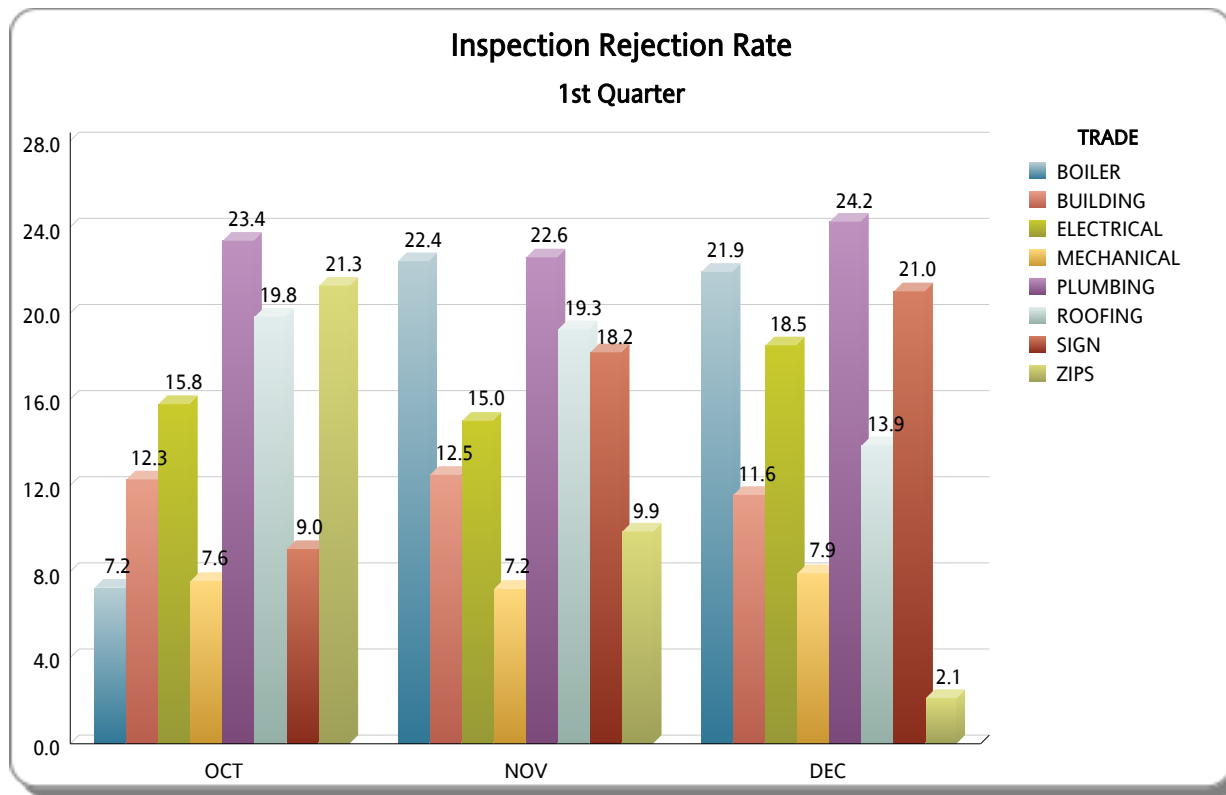
MIAMI-DADE COUNTY
DEPARTMENT OF REGULATORY AND ECONOMIC RESOURCES (RER)

Inspections Rejection Rate

Business Plan

FY: 2017/2018

From OCTOBER 1st, 2017 To SEPTEMBER 30th, 2018



MIAMI-DADE COUNTY
DEPARTMENT OF REGULATORY AND ECONOMIC RESOURCES (RER)
Inspections Rejection Rate
Business Plan
FY: 2017/2018
From OCTOBER 1st, 2017 To SEPTEMBER 30th, 2018

