

**MIAMI-DADE COUNTY**  
**DEPARTMENT OF REGULATORY AND ECONOMIC RESOURCES (RER)**  
**Business Plan**  
**PLANS TRACKING INITIAL REVIEW - COMMERCIAL**  
**From OCTOBER 2017 To SEPTEMBER 2018**

	OCT				NOV				DEC			
	Total # of Plans Reviewed	Total # of Plans Late	Percentage of Plans Completed on Time	Percentage of Plans late	Total # of Plans Reviewed	Total # of Plans Late	Percentage of Plans Completed on Time	Percentage of Plans late	Total # of Plans Reviewed	Total # of Plans Late	Percentage of Plans Completed on Time	Percentage of Plans late
1-Building	139	3	97.84	2.16	265	27	89.81	10.19	328	29	91.16	8.84
2-DERM	396	16	95.96	4.04	357	29	91.88	8.12	354	31	91.24	8.76
3-Electrical	152	2	98.68	1.32	172	9	94.77	5.23	236	3	98.73	1.27
4-Mechanical	58	0	100	0	64	0	100	0	141	0	100	0
5-Plumbing	211	0	100	0	247	1	99.6	0.4	259	1	99.61	0.39
6-Public Works	81	11	86.42	13.58	89	16	82.02	17.98	125	11	91.2	8.8
7-Public Works Concurrency	93	0	100	0	111	0	100	0	112	3	97.32	2.68
8-Roofing*	88	0	100	0	82	16	80.49	19.51	91	59	35.16	64.84
9-Structural	188	14	92.55	7.45	272	58	78.68	21.32	229	31	86.46	13.54
10-Zoning	455	6	98.68	1.32	444	9	97.97	2.03	438	5	98.86	1.14
11-A-Team*	0	0	0	0	1	0	100	0	1	0	100	0
12-Building-A-Team*	441	5	98.87	1.13	486	3	99.38	0.62	452	0	100	0
13-DERM-A-Team*	320	27	91.56	8.44	335	29	91.34	8.66	343	45	86.88	13.12
14-Electrical-A-Team*	353	4	98.87	1.13	378	2	99.47	0.53	391	1	99.74	0.26
15-Mechanical-A-Team*	216	1	99.54	0.46	197	1	99.49	0.51	235	1	99.57	0.43
16-Plumbing-A-Team*	214	0	100	0	233	1	99.57	0.43	251	0	100	0
17-Public Works-A-Team*	178	0	100	0	187	0	100	0	196	0	100	0
18-Structural-A-Team*	433	18	95.84	4.16	498	53	89.36	10.64	466	33	92.92	7.08
19-Zoning-A-Team*	427	20	95.32	4.68	525	29	94.48	5.52	505	16	96.83	3.17

**MIAMI-DADE COUNTY**  
**DEPARTMENT OF REGULATORY AND ECONOMIC RESOURCES (RER)**  
**Business Plan**  
**PLANS TRACKING INITIAL REVIEW - COMMERCIAL**  
**From OCTOBER 2017 To SEPTEMBER 2018**

	JAN				FEB				MAR			
	Total # of Plans Reviewed	Total # of Plans Late	Percentage of Plans Completed on Time	Percentage of Plans late	Total # of Plans Reviewed	Total # of Plans Late	Percentage of Plans Completed on Time	Percentage of Plans late	Total # of Plans Reviewed	Total # of Plans Late	Percentage of Plans Completed on Time	Percentage of Plans late
1-Building	289	36	87.54	12.46	221	27	87.78	12.22	307	59	80.78	19.22
2-DERM	468	117	75	25	348	13	96.26	3.74	405	15	96.3	3.7
3-Electrical	165	2	98.79	1.21	258	4	98.45	1.55	322	12	96.27	3.73
4-Mechanical	83	0	100	0	63	0	100	0	119	0	100	0
5-Plumbing	248	0	100	0	201	0	100	0	301	1	99.67	0.33
6-Public Works	127	14	88.98	11.02	100	7	93	7	101	11	89.11	10.89
7-Public Works Concurrency	87	1	98.85	1.15	86	0	100	0	105	1	99.05	0.95
8-Roofing*	89	57	35.96	64.04	63	26	58.73	41.27	108	56	48.15	51.85
9-Structural	278	36	87.05	12.95	215	21	90.23	9.77	256	35	86.33	13.67
10-Zoning	432	6	98.61	1.39	480	14	97.08	2.92	704	42	94.03	5.97
11-A-Team*	1	0	100	0	0	0	0	0	0	0	0	0
12-Building-A-Team*	476	0	100	0	467	4	99.14	0.86	599	0	100	0
13-DERM-A-Team*	386	89	76.94	23.06	287	25	91.29	8.71	405	34	91.6	8.4
14-Electrical-A-Team*	385	0	100	0	323	3	99.07	0.93	416	1	99.76	0.24
15-Mechanical-A-Team*	181	2	98.9	1.11	172	0	100	0	215	1	99.53	0.47
16-Plumbing-A-Team*	213	0	100	0	195	0	100	0	282	0	100	0
17-Public Works-A-Team*	178	7	96.07	3.93	160	0	100	0	196	0	100	0
18-Structural-A-Team*	436	10	97.71	2.29	423	16	96.22	3.78	579	42	92.75	7.25
19-Zoning-A-Team*	437	11	97.48	2.52	424	23	94.58	5.42	542	14	97.42	2.58

**MIAMI-DADE COUNTY**  
**DEPARTMENT OF REGULATORY AND ECONOMIC RESOURCES (RER)**  
**Business Plan**  
**PLANS TRACKING INITIAL REVIEW - COMMERCIAL**  
**From OCTOBER 2017 To SEPTEMBER 2018**

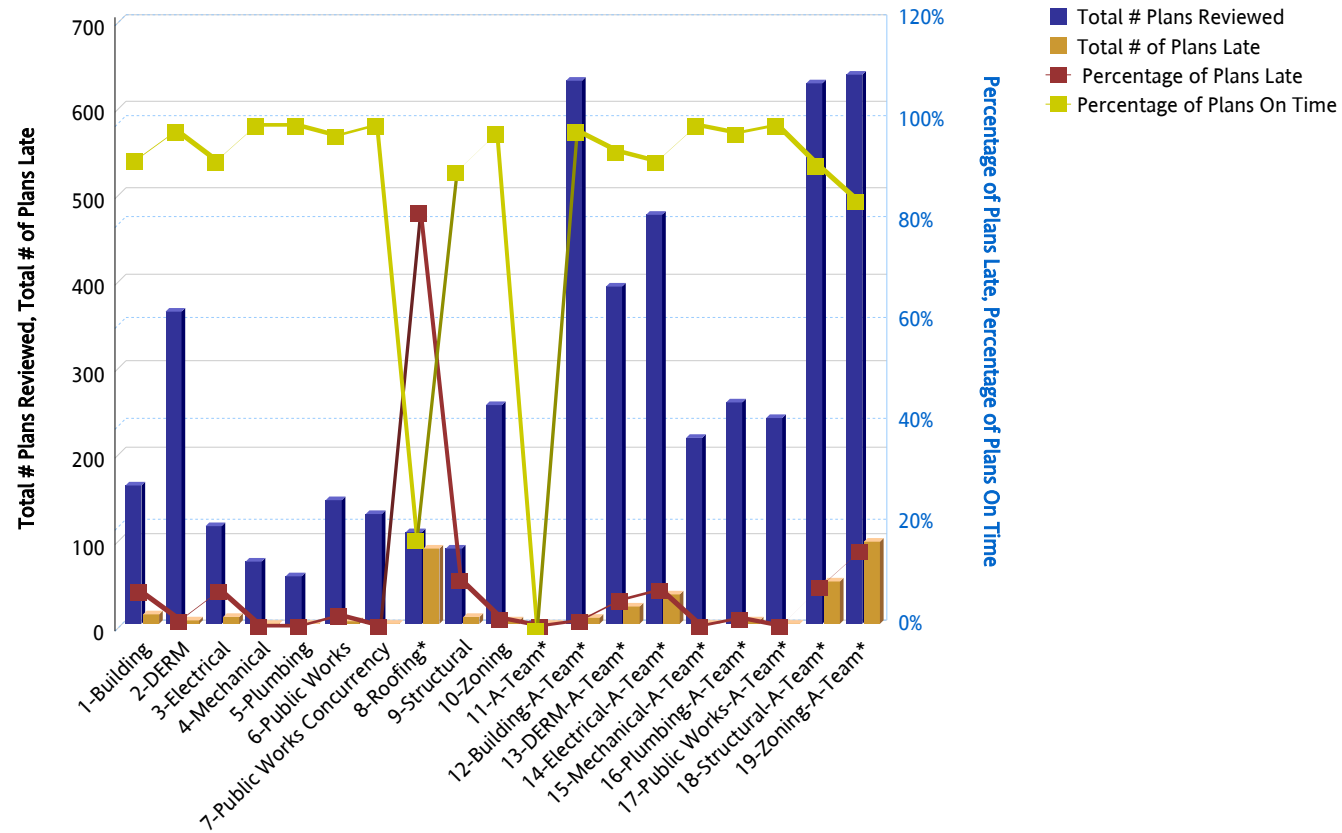
	APR				MAY				JUN			
	Total # of Plans Reviewed	Total # of Plans Late	Percentage of Plans Completed on Time	Percentage of Plans late	Total # of Plans Reviewed	Total # of Plans Late	Percentage of Plans Completed on Time	Percentage of Plans late	Total # of Plans Reviewed	Total # of Plans Late	Percentage of Plans Completed on Time	Percentage of Plans late
1-Building	273	45	83.52	16.48	306	41	86.6	13.4	202	64	68.32	31.68
2-DERM	483	16	96.69	3.31	437	20	95.42	4.58	460	30	93.48	6.52
3-Electrical	349	3	99.14	0.86	492	7	98.58	1.42	189	4	97.88	2.12
4-Mechanical	91	0	100	0	143	0	100	0	133	0	100	0
5-Plumbing	241	1	99.59	0.41	256	0	100	0	129	0	100	0
6-Public Works	118	9	92.37	7.63	120	9	92.5	7.5	97	3	96.91	3.09
7-Public Works Concurrency	108	10	90.74	9.26	124	0	100	0	145	0	100	0
8-Roofing*	121	52	57.02	42.98	146	82	43.84	56.16	86	38	55.81	44.19
9-Structural	269	27	89.96	10.04	337	42	87.54	12.46	184	22	88.04	11.96
10-Zoning	645	18	97.21	2.79	707	32	95.47	4.53	540	19	96.48	3.52
11-A-Team*	1	1	0	100	1	0	100	0	0	0	0	0
12-Building-A-Team*	578	0	100	0	676	1	99.85	0.15	801	40	95.01	4.99
13-DERM-A-Team*	367	51	86.1	13.9	353	34	90.37	9.63	426	78	81.69	18.31
14-Electrical-A-Team*	363	1	99.72	0.28	428	4	99.07	0.93	456	29	93.64	6.36
15-Mechanical-A-Team*	185	1	99.46	0.54	228	3	98.68	1.32	254	3	98.82	1.18
16-Plumbing-A-Team*	221	0	100	0	235	0	100	0	264	2	99.24	0.76
17-Public Works-A-Team*	193	0	100	0	218	0	100	0	267	2	99.25	0.75
18-Structural-A-Team*	575	36	93.74	6.26	656	51	92.23	7.77	727	70	90.37	9.63
19-Zoning-A-Team*	472	13	97.25	2.75	604	25	95.86	4.14	702	46	93.45	6.55

**MIAMI-DADE COUNTY**  
**DEPARTMENT OF REGULATORY AND ECONOMIC RESOURCES (RER)**  
**Business Plan**  
**PLANS TRACKING INITIAL REVIEW - COMMERCIAL**  
**From OCTOBER 2017 To SEPTEMBER 2018**

	JUL				AUG				SEPT			
	Total # of Plans Reviewed	Total # of Plans Late	Percentage of Plans Completed on Time	Percentage of Plans late	Total # of Plans Reviewed	Total # of Plans Late	Percentage of Plans Completed on Time	Percentage of Plans late	Total # of Plans Reviewed	Total # of Plans Late	Percentage of Plans Completed on Time	Percentage of Plans late
1-Building	97	3	96.91	3.09	142	6	95.77	4.23	160	11	93.13	6.88
2-DERM	410	27	93.41	6.59	460	5	98.91	1.09	361	4	98.89	1.11
3-Electrical	128	13	89.84	10.16	94	6	93.62	6.38	113	8	92.92	7.08
4-Mechanical	47	0	100	0	68	0	100	0	72	0	100	0
5-Plumbing	41	0	100	0	54	0	100	0	55	0	100	0
6-Public Works	147	7	95.24	4.76	171	2	98.83	1.17	143	3	97.9	2.1
7-Public Works Concurrency	94	2	97.87	2.13	155	0	100	0	127	0	100	0
8-Roofing*	93	41	55.91	44.09	123	65	47.15	52.85	106	87	17.92	82.08
9-Structural	50	9	82	18	70	9	87.14	12.86	87	8	90.8	9.2
10-Zoning	105	1	99.05	0.95	234	13	94.44	5.56	253	4	98.42	1.58
11-A-Team*	0	0	0	0	0	0	0	0	0	0	0	0
12-Building-A-Team*	744	7	99.06	0.94	728	15	97.94	2.06	628	7	98.89	1.11
13-DERM-A-Team*	391	50	87.21	12.79	442	24	94.57	5.43	390	20	94.87	5.13
14-Electrical-A-Team*	381	57	85.04	14.96	538	37	93.12	6.88	473	34	92.81	7.19
15-Mechanical-A-Team*	206	0	100	0	254	0	100	0	215	0	100	0
16-Plumbing-A-Team*	245	7	97.14	2.86	311	6	98.07	1.93	256	4	98.44	1.56
17-Public Works-A-Team*	208	0	100	0	241	0	100	0	238	0	100	0
18-Structural-A-Team*	664	62	90.66	9.34	743	49	93.41	6.59	625	49	92.16	7.84
19-Zoning-A-Team*	681	104	84.73	15.27	790	169	78.61	21.39	635	95	85.04	14.96

**MIAMI-DADE COUNTY**  
**DEPARTMENT OF REGULATORY AND ECONOMIC RESOURCES (RER)**  
**Business Plan**  
**PLANS TRACKING INITIAL REVIEW - COMMERCIAL**  
**From OCTOBER 2017 To SEPTEMBER 2018**

**INITIAL REVIEW COMMERCIAL**  
**FOR THE MONTH OF: SEPT**



**MIAMI-DADE COUNTY**  
**DEPARTMENT OF REGULATORY AND ECONOMIC RESOURCES (RER)**  
**Business Plan**  
**PLANS TRACKING INITIAL REVIEW - COMMERCIAL**  
**Fiscal Year to Date - Percentages**  
**From OCTOBER 2017 To SEPTEMBER 2018**

	OCT		NOV		DEC		JAN		FEB		MAR		APR		MAY		JUN		JUL		AUG		SEPT		FYTD - % of Plans on Time	FYTD - % of Plans Late
	Percentage of Plans Completed on Time	Percentage of Plans late	Percentage of Plans Completed on Time	Percentage of Plans late	Percentage of Plans Completed on Time	Percentage of Plans late	Percentage of Plans Completed on Time	Percentage of Plans late	Percentage of Plans Completed on Time	Percentage of Plans late	Percentage of Plans Completed on Time	Percentage of Plans late	Percentage of Plans Completed on Time	Percentage of Plans late	Percentage of Plans Completed on Time	Percentage of Plans late	Percentage of Plans Completed on Time	Percentage of Plans late	Percentage of Plans Completed on Time	Percentage of Plans late	Percentage of Plans Completed on Time	Percentage of Plans late	Percentage of Plans Completed on Time	Percentage of Plans late		
1-Building	97.84	2.16	89.81	10.19	91.16	8.84	87.54	12.46	87.78	12.22	80.78	19.22	83.52	16.48	86.6	13.4	68.32	31.68	96.91	3.09	95.77	4.23	93.13	6.88	87.14%	12.86%
2-DERM	95.96	4.04	91.88	8.12	91.24	8.76	75	25	96.26	3.74	96.3	3.7	96.69	3.31	95.42	4.58	93.48	6.52	93.41	6.59	98.91	1.09	98.89	1.11	93.46%	6.54%
3-Electrical	98.68	1.32	94.77	5.23	98.73	1.27	98.79	1.21	98.45	1.55	96.27	3.73	99.14	0.86	98.58	1.42	97.88	2.12	89.84	10.16	93.62	6.38	92.92	7.08	97.27%	2.73%
4-Mechanical	100	0	100	0	100	0	100	0	100	0	100	0	100	0	100	0	100	0	100	0	100	0	100	0	100.00%	0.00%
5-Plumbing	100	0	99.6	0.4	99.61	0.39	100	0	100	0	99.67	0.33	99.59	0.41	100	0	100	0	100	0	100	0	100	0	99.82%	0.18%
6-Public Works	86.42	13.58	82.02	17.98	91.2	8.8	88.98	11.02	93	7	89.11	10.89	92.37	7.63	92.5	7.5	96.91	3.09	95.24	4.76	98.83	1.17	97.9	2.1	92.74%	7.26%
7-Public Works Concurrency	100	0	100	0	97.32	2.68	98.85	1.15	100	0	99.05	0.95	90.74	9.26	100	0	100	0	97.87	2.13	100	0	100	0	98.74%	1.26%
8-Roofing*	100	0	80.49	19.51	35.16	64.84	35.96	64.04	58.73	41.27	48.15	51.85	57.02	42.98	43.84	56.16	55.81	44.19	55.91	44.09	47.15	52.85	17.92	82.08	51.59%	48.41%
9-Structural	92.55	7.45	78.68	21.32	86.46	13.54	87.05	12.95	90.23	9.77	86.33	13.67	89.96	10.04	87.54	12.46	88.04	11.96	82	18	87.14	12.86	90.8	9.2	87.19%	12.81%
10-Zoning	98.68	1.32	97.97	2.03	98.86	1.14	98.61	1.39	97.08	2.92	94.03	5.97	97.21	2.79	95.47	4.53	96.48	3.52	99.05	0.95	94.44	5.56	98.42	1.58	96.89%	3.11%
11-A-Team*	0	0	100	0	100	0	100	0	0	0	0	0	0	100	100	0	0	0	0	0	0	0	0	0	80.00%	20.00%
12-Building-A-Team*	98.87	1.13	99.38	0.62	100	0	100	0	99.14	0.86	100	0	100	0	99.85	0.15	95.01	4.99	99.06	0.94	97.94	2.06	98.89	1.11	98.84%	1.16%
13-DERM-A-Team*	91.56	8.44	91.34	8.66	86.88	13.12	76.94	23.06	91.29	8.71	91.6	8.4	86.1	13.9	90.37	9.63	81.69	18.31	87.21	12.79	94.57	5.43	94.87	5.13	88.62%	11.38%
14-Electrical-A-Team*	98.87	1.13	99.47	0.53	99.74	0.26	100	0	99.07	0.93	99.76	0.24	99.72	0.28	99.07	0.93	93.64	6.36	85.04	14.96	93.12	6.88	92.81	7.19	96.46%	3.54%
15-Mechanical-A-Team*	99.54	0.46	99.49	0.51	99.57	0.43	98.9	1.11	100	0	99.53	0.47	99.46	0.54	98.68	1.32	98.82	1.18	100	0	100	0	100	0	99.49%	0.51%
16-Plumbing-A-Team*	100	0	99.57	0.43	100	0	100	0	100	0	100	0	100	0	100	0	99.24	0.76	97.14	2.86	98.07	1.93	98.44	1.56	99.32%	0.68%
17-Public Works-A-Team*	100	0	100	0	100	0	96.07	3.93	100	0	100	0	100	0	100	0	99.25	0.75	100	0	100	0	100	0	99.63%	0.37%

**MIAMI-DADE COUNTY**  
**DEPARTMENT OF REGULATORY AND ECONOMIC RESOURCES (RER)**  
**Business Plan**  
**PLANS TRACKING INITIAL REVIEW - COMMERCIAL**  
**Fiscal Year to Date - Percentages**  
**From OCTOBER 2017 To SEPTEMBER 2018**

	OCT		NOV		DEC		JAN		FEB		MAR		APR		MAY		JUN		JUL		AUG		SEPT		FYTD - % of Plans on Time	FYTD - % of Plans Late
	Percentage of Plans Completed on Time	Percentage of Plans late	Percentage of Plans Completed on Time	Percentage of Plans late	Percentage of Plans Completed on Time	Percentage of Plans late	Percentage of Plans Completed on Time	Percentage of Plans late	Percentage of Plans Completed on Time	Percentage of Plans late	Percentage of Plans Completed on Time	Percentage of Plans late	Percentage of Plans Completed on Time	Percentage of Plans late	Percentage of Plans Completed on Time	Percentage of Plans late	Percentage of Plans Completed on Time	Percentage of Plans late	Percentage of Plans Completed on Time	Percentage of Plans late	Percentage of Plans Completed on Time	Percentage of Plans late	Percentage of Plans Completed on Time	Percentage of Plans late		
<b>18-Structural-A-Team*</b>	95.84	4.16	89.36	10.64	92.92	7.08	97.71	2.29	96.22	3.78	92.75	7.25	93.74	6.26	92.23	7.77	90.37	9.63	90.66	9.34	93.41	6.59	92.16	7.84	92.84%	7.16%
<b>19-Zoning-A-Team*</b>	95.32	4.68	94.48	5.52	96.83	3.17	97.48	2.52	94.58	5.42	97.42	2.58	97.25	2.75	95.86	4.14	93.45	6.55	84.73	15.27	78.61	21.39	85.04	14.96	91.62%	8.38%