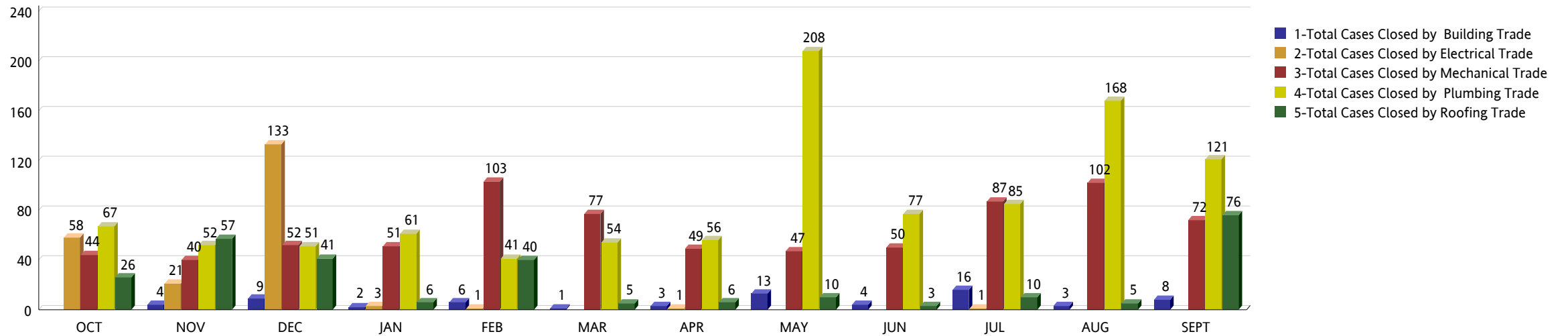


MIAMI-DADE COUNTY
DEPARTMENT OF REGULATORY AND ECONOMIC RESOURCES (RER)
 Business Plan
BUILDING CODE VIOLATIONS CLOSED
 From OCTOBER 2017 To SEPTEMBER 2018

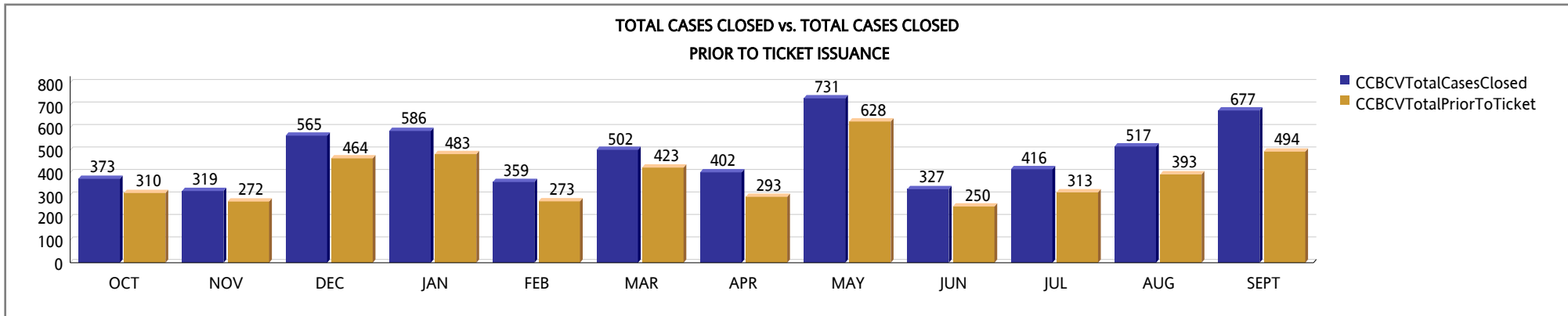
	OCT	NOV	DEC	JAN	FEB	MAR	APR	MAY	JUN	JUL	AUG	SEPT	Total
1-Total Cases Closed by Building Trade	0	4	9	2	6	1	3	13	4	16	3	8	69
2-Total Cases Closed by Electrical Trade	58	21	133	3	1	0	1	0	0	1	0	0	218
3-Total Cases Closed by Mechanical Trade	44	40	52	51	103	77	49	47	50	87	102	72	774
4-Total Cases Closed by Plumbing Trade	67	52	51	61	41	54	56	208	77	85	168	121	1,041
5-Total Cases Closed by Roofing Trade	26	57	41	6	40	5	6	10	3	10	5	76	285
6-Total Cases Closed by Unknown Trade (cases not assigned to an Inspector)	178	145	279	463	168	365	287	453	193	217	239	400	3,387
Total Cases Closed	373	319	565	586	359	502	402	731	327	416	517	677	5,774

TOTAL CASES CLOSED BY TRADE



MIAMI-DADE COUNTY
DEPARTMENT OF REGULATORY AND ECONOMIC RESOURCES (RER)
Business Plan
BUILDING CODE VIOLATIONS CLOSED
From OCTOBER 2017 To SEPTEMBER 2018

	OCT	NOV	DEC	JAN	FEB	MAR	APR	MAY	JUN	JUL	AUG	SEPT	Total
1-Cases Closed Prior to Ticket Issuance - Building Trade	0	2	7	2	4	1	3	13	3	16	3	7	61
2-Cases Closed Prior to Ticket Issuance - Electrical Trade	51	18	99	2	1	0	0	0	0	1	0	0	172
3-Cases Closed Prior to Ticket Issuance - Mechanical Trade	36	34	40	27	86	56	26	38	26	48	79	30	526
4-Cases Closed Prior to Ticket Issuance - Plumbing Trade	51	41	35	47	28	44	39	170	60	60	116	80	771
5-Cases Closed Prior to Ticket Issuance - Roofing Trade	16	51	31	1	31	1	0	2	2	1	2	73	211
6-Cases Closed Prior to Ticket Issuance (cases not assigned to an Inspector)	156	126	252	404	123	321	225	405	159	187	193	304	2,855
Total Cases Closed Prior to Ticket Issuance	310	272	464	483	273	423	293	628	250	313	393	494	4,596



MIAMI-DADE COUNTY
DEPARTMENT OF REGULATORY AND ECONOMIC RESOURCES (RER)
Business Plan
BUILDING CODE VIOLATIONS CLOSED
From OCTOBER 2017 To SEPTEMBER 2018

	OCT	NOV	DEC	JAN	FEB	MAR	APR	MAY	JUN	JUL	AUG	SEPT	Total
1-Percentage of Cases Closed Prior to Ticket Issuance - Building Trade	0%	50%	78%	100%	67%	100%	100%	100%	75%	100%	100%	88%	88%
2-Percentage of Cases Closed Prior to Ticket Issuance - Electrical Trade	88%	86%	74%	67%	100%	0%	0%	0%	0%	100%	0%	0%	79%
3-Percentage of Cases Closed Prior to Ticket Issuance - Mechanical Trade	82%	85%	77%	53%	83%	73%	53%	81%	52%	55%	77%	42%	68%
4-Percentage of Cases Closed Prior to Ticket Issuance - Plumbing Trade	76%	79%	69%	77%	68%	81%	70%	82%	78%	71%	69%	66%	74%
5-Percentage of Cases Closed Prior to Ticket Issuance - Roofing Trade	62%	89%	76%	17%	78%	20%	0%	20%	67%	10%	40%	96%	74%
6-Percentage of Cases Closed Prior to Ticket Issuance - Unknown Trade	88%	87%	90%	87%	73%	88%	78%	89%	82%	86%	81%	76%	84%
Percentage of Cases Closed Prior to Ticket	83%	85%	82%	82%	76%	84%	73%	86%	76%	75%	76%	73%	80%

