

**MIAMI-DADE COUNTY**  
**DEPARTMENT OF REGULATORY AND ECONOMIC RESOURCES (RER)**  
**Inspections Rejection Rate**  
**Business Plan**  
**FY: 2018/2019**  
**From OCTOBER 1st, 2018 To SEPTEMBER 30th, 2019**

TRADE	OCT							NOV							DEC						
	*Total	Approved	Carryovers & Bad Weather	***Invalid Inspection Request	Insp. Cancelled	Rejected	% Rejection	*Total	Approved	Carryovers & Bad Weather	***Invalid Inspection Request	Insp. Cancelled	Rejected	% Rejection	*Total	Approved	Carryovers & Bad Weather	***Invalid Inspection Request	Insp. Cancelled	Rejected	% Rejection
BOILER	157	138	1	0	0	19	12.1	189	145	2	0	0	44	23.3							
BUILDING	6,048	5,140	22	402	807	908	15.0	5,345	4,647	3	303	750	698	13.1	4,743	4,037	7	298	646	706	14.9
ELECTRICAL	4,071	3,323	1	185	298	748	18.4	3,679	2,976	1	142	255	703	19.1	3,316	2,672	1	117	283	644	19.4
MECHANICAL	1,362	1,200	0	62	199	162	11.9	1,104	1,001	0	59	140	103	9.3	904	820	0	54	134	84	9.3
PLUMBING	2,893	2,337	0	136	375	556	19.2	2,574	2,111	0	131	307	463	18.0	2,098	1,719	0	103	284	379	18.1
ROOFING	7,264	5,556	90	450	976	1,708	23.5	6,623	5,076	85	368	877	1,547	23.4	5,980	4,557	200	326	766	1,423	23.8
SIGN	265	188	0	13	36	77	29.1	179	143	0	12	28	36	20.1	183	133	0	35	12	50	27.3
ZIPS	88	75	0	13	3	13	14.8	86	72	0	4	9	14	16.3	74	63	0	14	2	11	14.9
<b>Total</b>	<b>22,148</b>	<b>17,957</b>	<b>114</b>	<b>1,261</b>	<b>2,694</b>	<b>4,191</b>	<b>18.9</b>	<b>19,779</b>	<b>16,171</b>	<b>91</b>	<b>1,019</b>	<b>2,366</b>	<b>3,608</b>	<b>18.2</b>	<b>17,298</b>	<b>14,001</b>	<b>208</b>	<b>947</b>	<b>2,127</b>	<b>3,297</b>	<b>19.1</b>

TRADE	JAN							FEB							MAR						
	*Total	Approved	Carryovers & Bad Weather	***Invalid Inspection Request	Insp. Cancelled	Rejected	% Rejection	*Total	Approved	Carryovers & Bad Weather	***Invalid Inspection Request	Insp. Cancelled	Rejected	% Rejection	*Total	Approved	Carryovers & Bad Weather	***Invalid Inspection Request	Insp. Cancelled	Rejected	% Rejection
BOILER	217	154	3	6	0	63	29.0	249	219	3	1	0	30	12.0	171	163	1	3	0	8	4.7
BUILDING	4,828	4,110	3	254	543	718	14.9	4,680	4,002	13	280	587	678	14.5	5,340	4,476	22	289	612	864	16.2
ELECTRICAL	3,609	2,903	0	142	257	706	19.6	3,389	2,863	6	115	254	526	15.5	3,933	3,247	13	170	327	686	17.4
MECHANICAL	1,060	990	0	66	163	70	6.6	927	858	0	67	131	69	7.4	1,130	1,003	0	75	118	127	11.2
PLUMBING	2,479	2,032	0	105	334	447	18.0	2,422	1,965	0	137	312	457	18.9	2,710	2,121	0	110	301	589	21.7
ROOFING	5,534	4,257	18	261	734	1,277	23.1	5,439	4,187	146	293	682	1,252	23.0	6,163	4,795	100	338	776	1,368	22.2
SIGN	213	173	0	21	33	40	18.8	226	180	0	18	23	46	20.4	202	175	0	28	12	27	13.4
ZIPS	69	63	0	10	8	6	8.7	74	63	0	15	8	11	14.9	85	70	0	15	5	15	17.6
<b>Total</b>	<b>18,009</b>	<b>14,682</b>	<b>24</b>	<b>865</b>	<b>2,072</b>	<b>3,327</b>	<b>18.5</b>	<b>17,406</b>	<b>14,337</b>	<b>168</b>	<b>926</b>	<b>1,997</b>	<b>3,069</b>	<b>17.6</b>	<b>19,734</b>	<b>16,050</b>	<b>136</b>	<b>1,028</b>	<b>2,151</b>	<b>3,684</b>	<b>18.7</b>

**MIAMI-DADE COUNTY**  
**DEPARTMENT OF REGULATORY AND ECONOMIC RESOURCES (RER)**  
**Inspections Rejection Rate**  
**Business Plan**  
**FY: 2018/2019**  
**From OCTOBER 1st, 2018 To SEPTEMBER 30th, 2019**

TRADE	APRIL							MAY							JUNE						
	*Total	Approved	Carryovers & Bad Weather	***Invalid Inspection Request	Insp. Cancelled	Rejected	% Rejection	*Total	Approved	Carryovers & Bad Weather	***Invalid Inspection Request	Insp. Cancelled	Rejected	% Rejection	*Total	Approved	Carryovers & Bad Weather	***Invalid Inspection Request	Insp. Cancelled	Rejected	% Rejection
BOILER	196	163	0	0	0	33	16.8	133	100	0	0	0	33	24.8	218	174	0	1	0	44	20.2
BUILDING	5,717	4,795	8	333	735	922	16.1	6,071	5,051	12	337	797	1,020	16.8	5,321	4,444	6	291	647	877	16.5
ELECTRICAL	4,114	3,344	1	131	320	770	18.7	3,809	3,195	10	147	281	614	16.1	3,386	2,780	5	137	287	606	17.9
MECHANICAL	1,139	993	1	71	151	146	12.8	1,118	997	0	66	140	121	10.8	1,050	911	2	55	173	139	13.2
PLUMBING	2,770	2,263	0	95	356	507	18.3	2,704	2,146	0	111	347	558	20.6	2,391	1,885	0	88	316	506	21.2
ROOFING	6,420	4,904	78	347	912	1,516	23.6	6,188	4,673	135	344	878	1,515	24.5	4,963	3,682	65	280	845	1,281	25.8
SIGN	291	260	0	15	23	31	10.7	233	197	0	17	41	36	15.5	172	140	1	20	17	32	18.6
ZIPs	106	93	0	14	9	13	12.3	102	86	0	30	11	16	15.7	64	58	0	8	5	6	9.4
<b>Total</b>	<b>20,753</b>	<b>16,815</b>	<b>88</b>	<b>1,006</b>	<b>2,506</b>	<b>3,938</b>	<b>19.0</b>	<b>20,358</b>	<b>16,445</b>	<b>157</b>	<b>1,052</b>	<b>2,495</b>	<b>3,913</b>	<b>19.2</b>	<b>17,565</b>	<b>14,074</b>	<b>79</b>	<b>880</b>	<b>2,290</b>	<b>3,491</b>	<b>19.9</b>

TRADE	JUL							AUG							SEP						
	*Total	Approved	Carryovers & Bad Weather	***Invalid Inspection Request	Insp. Cancelled	Rejected	% Rejection	*Total	Approved	Carryovers & Bad Weather	***Invalid Inspection Request	Insp. Cancelled	Rejected	% Rejection	*Total	Approved	Carryovers & Bad Weather	***Invalid Inspection Request	Insp. Cancelled	Rejected	% Rejection
BOILER	222	158	0	2	0	64	28.8	172	124	9	0	0	48	27.9	116	89	9	0	0	27	23.3
BUILDING	6,355	5,226	23	396	764	1,129	17.8	6,240	5,031	67	368	871	1,209	19.4	5,491	4,514	2	292	688	977	17.8
ELECTRICAL	4,146	3,345	3	176	334	801	19.3	4,035	3,286	13	156	310	749	18.6	3,833	3,131	4	190	330	702	18.3
MECHANICAL	1,117	961	1	91	153	156	14.0	1,272	1,119	1	86	153	153	12.0	1,222	1,118	3	89	165	104	8.5
PLUMBING	2,502	2,009	2	84	356	493	19.7	2,627	2,114	0	105	338	513	19.5	2,389	1,871	0	88	279	518	21.7
ROOFING	5,440	4,119	120	360	831	1,321	24.3	4,951	3,770	157	300	743	1,181	23.9	5,059	3,740	46	290	716	1,319	26.1
SIGN	216	182	1	15	37	34	15.7	225	190	0	17	31	35	15.6	187	147	0	10	33	40	21.4
ZIPs	98	83	1	12	5	15	15.3	82	68	0	14	4	14	17.1	57	47	0	12	4	10	17.5
<b>Total</b>	<b>20,096</b>	<b>16,083</b>	<b>151</b>	<b>1,136</b>	<b>2,480</b>	<b>4,013</b>	<b>20.0</b>	<b>19,604</b>	<b>15,702</b>	<b>247</b>	<b>1,046</b>	<b>2,450</b>	<b>3,902</b>	<b>19.9</b>	<b>18,354</b>	<b>14,657</b>	<b>64</b>	<b>971</b>	<b>2,215</b>	<b>3,697</b>	<b>20.1</b>

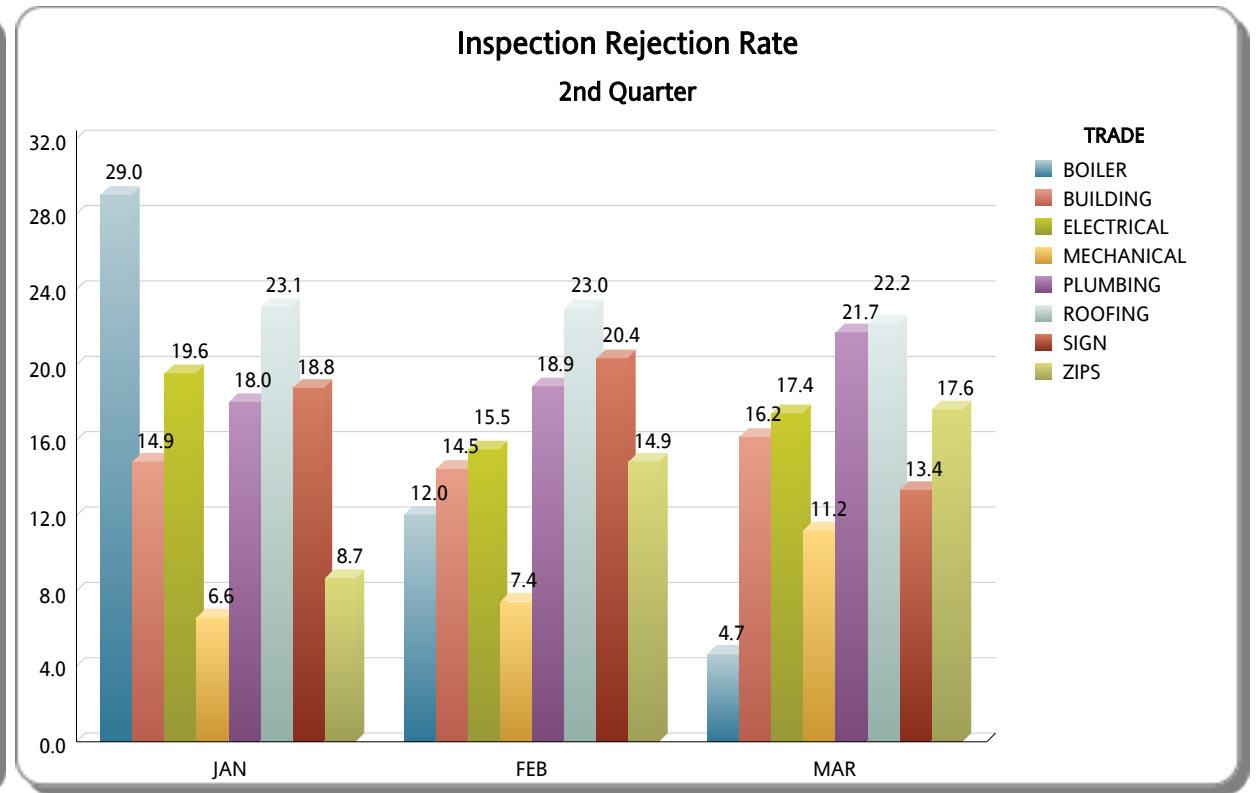
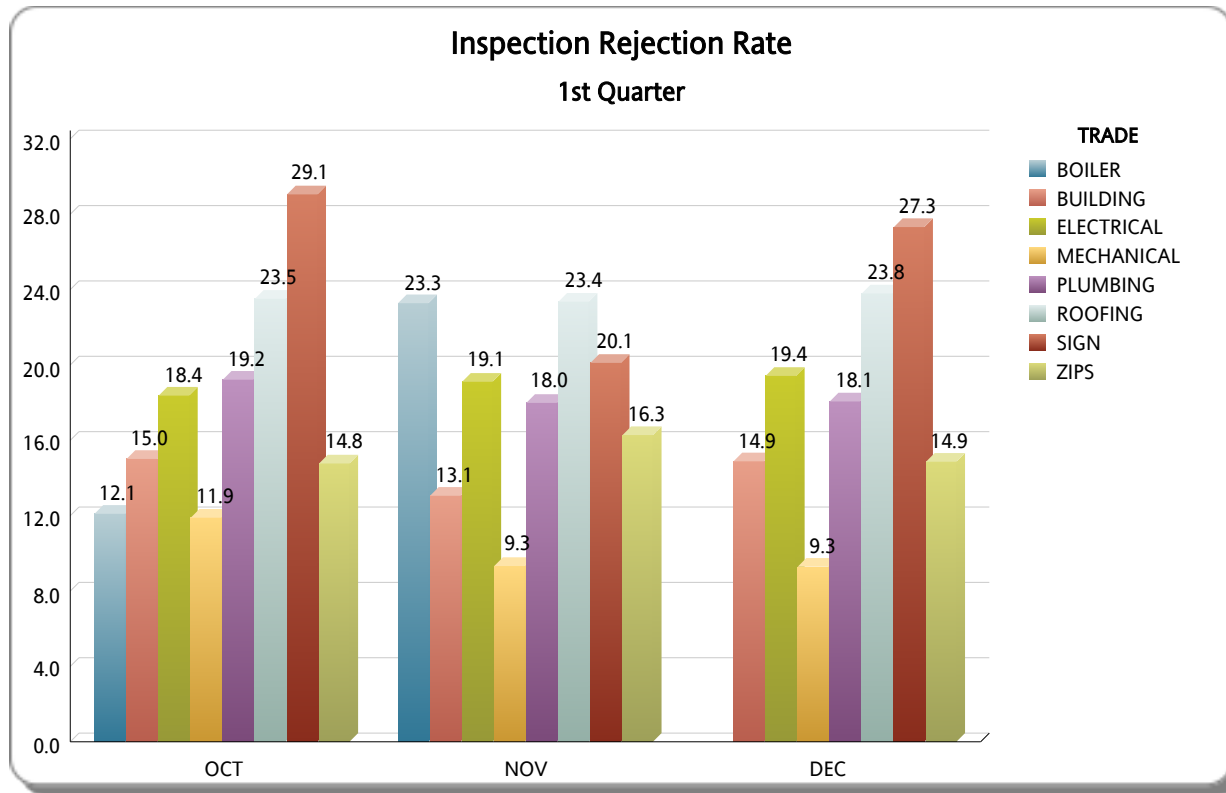
MIAMI-DADE COUNTY  
DEPARTMENT OF REGULATORY AND ECONOMIC RESOURCES (RER)

Inspections Rejection Rate

Business Plan

FY: 2018/2019

From OCTOBER 1st, 2018 To SEPTEMBER 30th, 2019



**MIAMI-DADE COUNTY**  
**DEPARTMENT OF REGULATORY AND ECONOMIC RESOURCES (RER)**  
**Inspections Rejection Rate**  
**Business Plan**  
 FY: 2018/2019  
 From OCTOBER 1st, 2018 To SEPTEMBER 30th, 2019

