

**MIAMI-DADE COUNTY**  
**DEPARTMENT OF REGULATORY AND ECONOMIC RESOURCES (RER)**  
**Inspections Rejection Rate**  
**Business Plan**  
**FY: 2020/2021**  
**From OCTOBER 1st, 2020 To SEPTEMBER 30th, 2021**

TRADE	OCT							NOV							DEC						
	*Total	Approved	Carryovers & Bad Weather	***Invalid Inspection Request	Insp. Cancelled	Rejected	% Rejection	*Total	Approved	Carryovers & Bad Weather	***Invalid Inspection Request	Insp. Cancelled	Rejected	% Rejection	*Total	Approved	Carryovers & Bad Weather	***Invalid Inspection Request	Insp. Cancelled	Rejected	% Rejection
BOILER	157	130	0	0	0	27	17.2	200	147	0	0	0	53	26.5	142	113	0	0	0	29	20.4
BUILDING	5,353	4,364	59	211	773	989	18.5	4,489	3,578	205	176	632	911	20.3	5,309	4,256	1	212	676	1,053	19.8
ELECTRICAL	3,624	2,975	13	205	405	649	17.9	3,036	2,470	144	177	478	566	18.6	3,704	3,015	1	211	484	689	18.6
MECHANICAL	1,178	1,001	0	63	149	177	15.0	991	812	50	39	118	179	18.1	1,284	1,068	0	83	187	216	16.8
PLUMBING	2,198	1,716	0	70	283	482	21.9	1,816	1,439	82	57	268	377	20.8	2,204	1,699	0	71	255	505	22.9
ROOFING	4,846	3,751	89	313	852	1,095	22.6	4,343	3,353	233	295	727	990	22.8	5,685	4,277	20	360	842	1,408	24.8
SIGN	125	119	0	18	14	6	4.8	166	144	19	13	34	22	13.3	150	131	0	11	38	19	12.7
ZIPS	86	67	2	13	2	19	22.1	72	60	1	7	3	12	16.7	91	75	0	16	6	16	17.6
<b>Total</b>	<b>17,567</b>	<b>14,123</b>	<b>163</b>	<b>893</b>	<b>2,478</b>	<b>3,444</b>	<b>19.6</b>	<b>15,113</b>	<b>12,003</b>	<b>734</b>	<b>764</b>	<b>2,260</b>	<b>3,110</b>	<b>20.6</b>	<b>18,569</b>	<b>14,634</b>	<b>22</b>	<b>964</b>	<b>2,488</b>	<b>3,935</b>	<b>21.2</b>

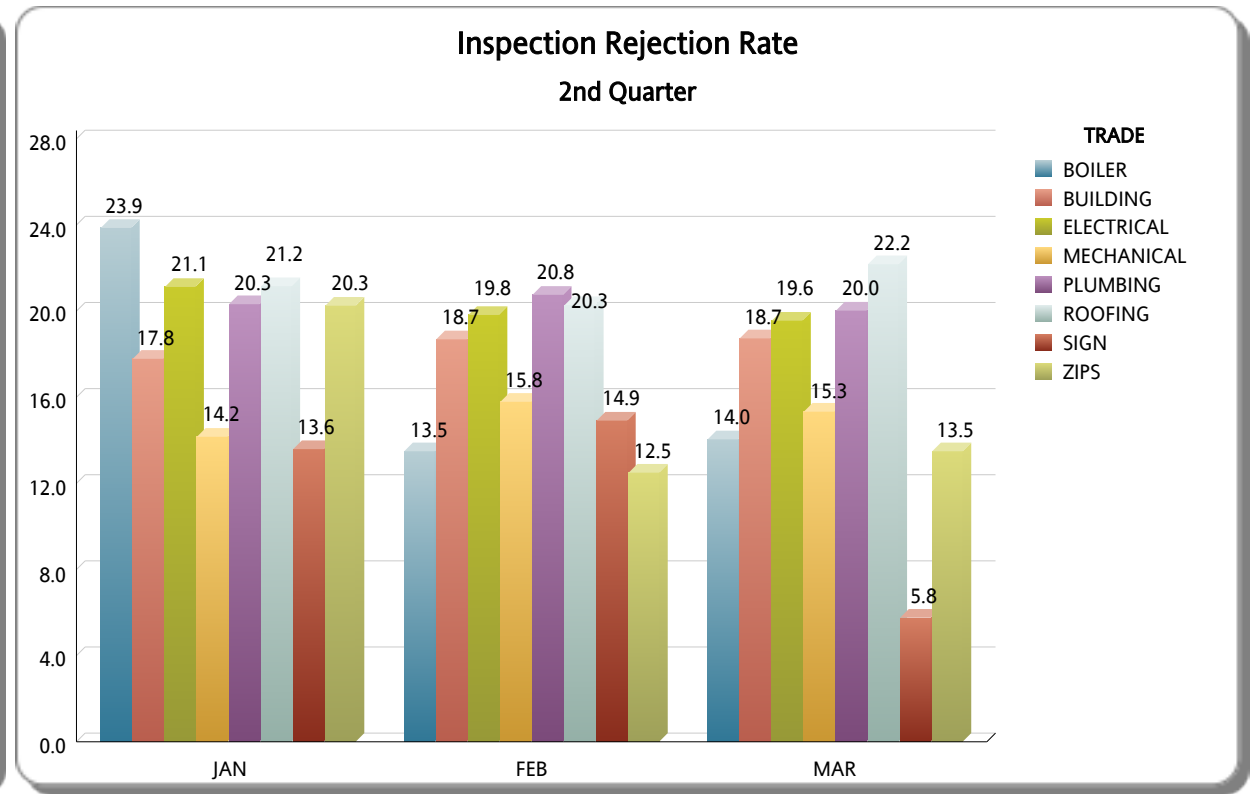
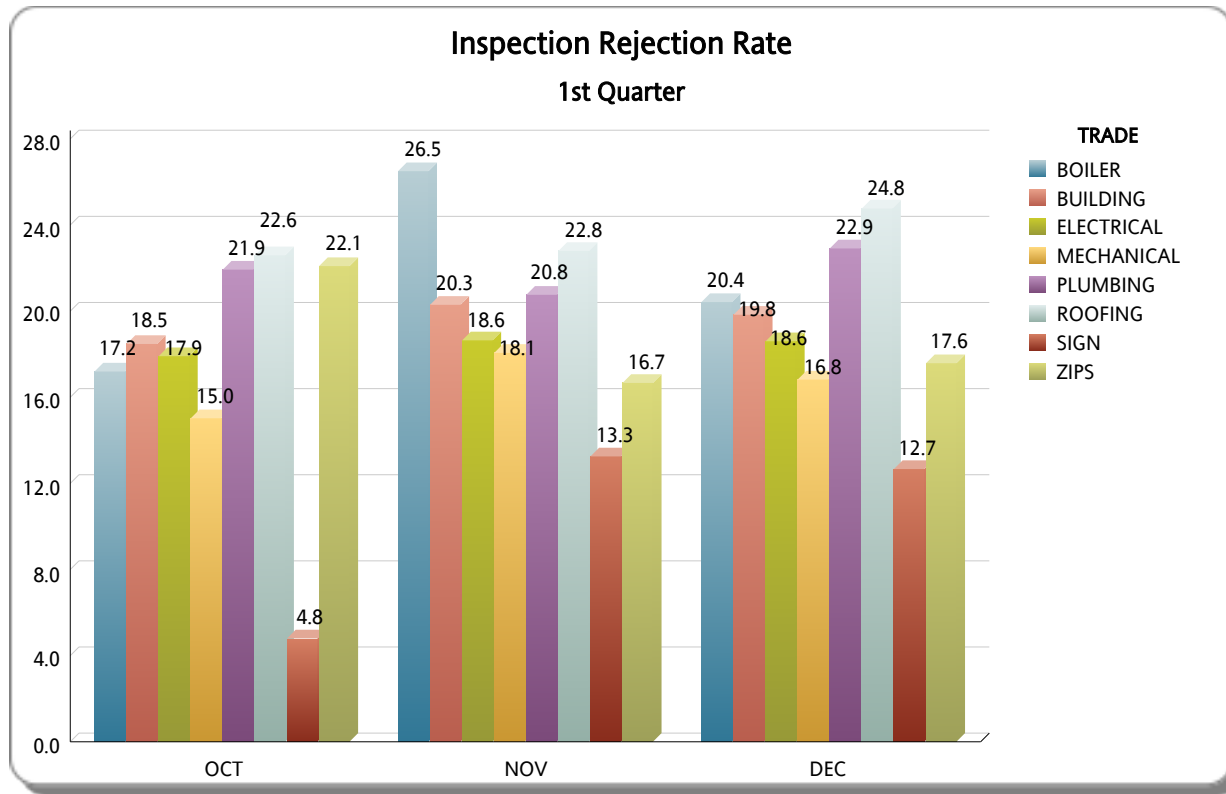
TRADE	JAN							FEB							MAR						
	*Total	Approved	Carryovers & Bad Weather	***Invalid Inspection Request	Insp. Cancelled	Rejected	% Rejection	*Total	Approved	Carryovers & Bad Weather	***Invalid Inspection Request	Insp. Cancelled	Rejected	% Rejection	*Total	Approved	Carryovers & Bad Weather	***Invalid Inspection Request	Insp. Cancelled	Rejected	% Rejection
BOILER	176	134	3	0	0	42	23.9	252	218	0	0	0	34	13.5	178	153	0	0	0	25	14.0
BUILDING	4,689	3,855	0	185	562	834	17.8	4,858	3,950	11	225	612	908	18.7	5,551	4,511	0	221	591	1,040	18.7
ELECTRICAL	3,612	2,849	0	180	381	763	21.1	3,491	2,799	3	193	381	692	19.8	4,116	3,311	0	239	444	805	19.6
MECHANICAL	1,080	927	0	46	131	153	14.2	969	816	0	49	137	153	15.8	1,161	983	0	66	146	178	15.3
PLUMBING	1,973	1,572	0	75	212	401	20.3	2,110	1,672	0	67	272	438	20.8	2,367	1,893	0	72	275	474	20.0
ROOFING	4,773	3,763	5	262	618	1,010	21.2	4,413	3,518	38	244	582	895	20.3	5,861	4,561	9	343	790	1,300	22.2
SIGN	206	178	0	17	30	28	13.6	181	154	0	11	39	27	14.9	295	278	0	15	46	17	5.8
ZIPS	79	63	0	15	7	16	20.3	80	70	0	5	4	10	12.5	126	109	0	17	7	17	13.5
<b>Total</b>	<b>16,588</b>	<b>13,341</b>	<b>8</b>	<b>780</b>	<b>1,941</b>	<b>3,247</b>	<b>19.6</b>	<b>16,354</b>	<b>13,197</b>	<b>52</b>	<b>794</b>	<b>2,027</b>	<b>3,157</b>	<b>19.3</b>	<b>19,655</b>	<b>15,799</b>	<b>9</b>	<b>973</b>	<b>2,299</b>	<b>3,856</b>	<b>19.6</b>

**MIAMI-DADE COUNTY**  
**DEPARTMENT OF REGULATORY AND ECONOMIC RESOURCES (RER)**  
**Inspections Rejection Rate**  
**Business Plan**  
**FY: 2020/2021**  
**From OCTOBER 1st, 2020 To SEPTEMBER 30th, 2021**

TRADE	APRIL							MAY							JUNE						
	*Total	Approved	Carryovers & Bad Weather	***Invalid Inspection Request	Insp. Cancelled	Rejected	% Rejection	*Total	Approved	Carryovers & Bad Weather	***Invalid Inspection Request	Insp. Cancelled	Rejected	% Rejection	*Total	Approved	Carryovers & Bad Weather	***Invalid Inspection Request	Insp. Cancelled	Rejected	% Rejection
BOILER	174	159	0	0	0	15	8.6	113	93	0	0	0	20	17.7	185	152	1	0	0	33	17.8
BUILDING	5,188	4,156	0	202	531	1,032	19.9	5,091	4,124	0	206	630	967	19.0	6,026	4,850	43	259	727	1,176	19.5
ELECTRICAL	3,825	3,098	0	219	364	727	19.0	3,570	2,890	1	200	374	680	19.0	3,888	3,173	23	283	457	715	18.4
MECHANICAL	1,053	885	0	71	145	168	16.0	1,053	901	0	67	147	152	14.4	1,024	847	1	32	128	177	17.3
PLUMBING	2,103	1,681	0	76	296	422	20.1	1,994	1,596	0	71	230	398	20.0	2,284	1,810	3	73	301	474	20.8
ROOFING	5,018	3,964	5	301	780	1,054	21.0	4,873	3,894	8	269	657	979	20.1	4,761	3,834	165	319	788	927	19.5
SIGN	143	112	0	6	21	31	21.7	181	163	0	37	38	18	9.9	206	172	5	25	77	34	16.5
ZIPPS	107	89	0	16	13	18	16.8	97	81	0	10	7	16	16.5	139	115	0	16	5	24	17.3
<b>Total</b>	<b>17,611</b>	<b>14,144</b>	<b>5</b>	<b>891</b>	<b>2,150</b>	<b>3,467</b>	<b>19.7</b>	<b>16,972</b>	<b>13,742</b>	<b>9</b>	<b>860</b>	<b>2,083</b>	<b>3,230</b>	<b>19.0</b>	<b>18,513</b>	<b>14,953</b>	<b>241</b>	<b>1,007</b>	<b>2,483</b>	<b>3,560</b>	<b>19.2</b>

TRADE	JUL							AUG							SEP						
	*Total	Approved	Carryovers & Bad Weather	***Invalid Inspection Request	Insp. Cancelled	Rejected	% Rejection	*Total	Approved	Carryovers & Bad Weather	***Invalid Inspection Request	Insp. Cancelled	Rejected	% Rejection	*Total	Approved	Carryovers & Bad Weather	***Invalid Inspection Request	Insp. Cancelled	Rejected	% Rejection
BOILER	239	183	1	2	0	56	23.4	221	179	2	0	0	42	19.0	118	96	0	5	0	22	18.6
BUILDING	5,280	4,241	41	278	663	1,039	19.7	5,715	4,605	20	354	762	1,110	19.4	6,106	4,884	29	323	788	1,222	20.0
ELECTRICAL	3,823	3,113	8	231	490	710	18.6	3,893	3,227	15	281	419	666	17.1	3,989	3,299	17	302	485	690	17.3
MECHANICAL	923	812	0	52	107	111	12.0	997	894	5	69	136	103	10.3	1,023	917	0	65	103	106	10.4
PLUMBING	2,099	1,670	0	40	263	429	20.4	2,249	1,783	0	96	294	466	20.7	2,352	1,915	0	85	248	437	18.6
ROOFING	4,373	3,472	110	262	747	901	20.6	4,988	3,796	123	299	777	1,192	23.9	5,033	3,865	191	331	897	1,168	23.2
SIGN	107	91	0	6	26	16	15.0	151	140	0	15	42	11	7.3	179	170	0	14	22	9	5.0
ZIPPS	88	76	0	11	11	12	13.6	97	81	0	8	5	16	16.5	90	77	0	16	1	13	14.4
<b>Total</b>	<b>16,932</b>	<b>13,658</b>	<b>160</b>	<b>882</b>	<b>2,307</b>	<b>3,274</b>	<b>19.3</b>	<b>18,311</b>	<b>14,705</b>	<b>165</b>	<b>1,122</b>	<b>2,435</b>	<b>3,606</b>	<b>19.7</b>	<b>18,890</b>	<b>15,223</b>	<b>237</b>	<b>1,141</b>	<b>2,544</b>	<b>3,667</b>	<b>19.4</b>

**MIAMI-DADE COUNTY**  
**DEPARTMENT OF REGULATORY AND ECONOMIC RESOURCES (RER)**  
**Inspections Rejection Rate**  
**Business Plan**  
**FY: 2020/2021**  
**From OCTOBER 1st, 2020 To SEPTEMBER 30th, 2021**



**MIAMI-DADE COUNTY**  
**DEPARTMENT OF REGULATORY AND ECONOMIC RESOURCES (RER)**  
**Inspections Rejection Rate**  
**Business Plan**  
**FY: 2020/2021**  
**From OCTOBER 1st, 2020 To SEPTEMBER 30th, 2021**

