

MIAMI-DADE COUNTY
DEPARTMENT OF REGULATORY AND ECONOMIC RESOURCES (RER)
Inspections Rejection Rate
Business Plan
FY: 2023/2024
From OCTOBER 1st, 2023 To SEPTEMBER 30th, 2024

TRADE	OCT							NOV							DEC						
	*Total	Approved	Carryovers & Bad Weather	***Invalid Inspection Request	Insp. Cancelled	Rejected	% Rejection	*Total	Approved	Carryovers & Bad Weather	***Invalid Inspection Request	Insp. Cancelled	Rejected	% Rejection	*Total	Approved	Carryovers & Bad Weather	***Invalid Inspection Request	Insp. Cancelled	Rejected	% Rejection
BOILER	184	152	4	5	0	32	17.4	301	131	18	2	0	170	56.5	197	136	5	0	0	61	31.0
BUILDING	6,029	4,967	68	275	902	1,062	17.6	5,166	4,277	120	265	760	889	17.2	4,676	3,911	13	211	739	765	16.4
ELECTRICAL	4,147	3,294	118	258	341	853	20.6	3,645	2,960	116	216	319	685	18.8	3,253	2,733	9	181	254	520	16.0
MECHANICAL	1,127	1,000	0	25	150	127	11.3	1,009	894	0	29	165	115	11.4	910	826	1	36	123	84	9.2
PLUMBING	2,219	1,859	0	50	322	360	16.2	2,028	1,656	0	55	301	372	18.3	1,726	1,452	0	35	239	274	15.9
ROOFING	4,789	3,766	50	256	633	1,023	21.4	4,036	3,167	53	143	636	869	21.5	3,772	2,976	64	164	565	796	21.1
SIGN	202	140	0	24	38	62	30.7	170	146	5	25	24	24	14.1	118	101	0	9	6	17	14.4
ZIPS	74	61	1	6	8	13	17.6	79	66	3	9	11	13	16.5	63	52	0	9	3	11	17.5
Total	18,771	15,239	241	899	2,394	3,532	18.8	16,434	13,297	315	744	2,216	3,137	19.1	14,715	12,187	92	645	1,929	2,528	17.2

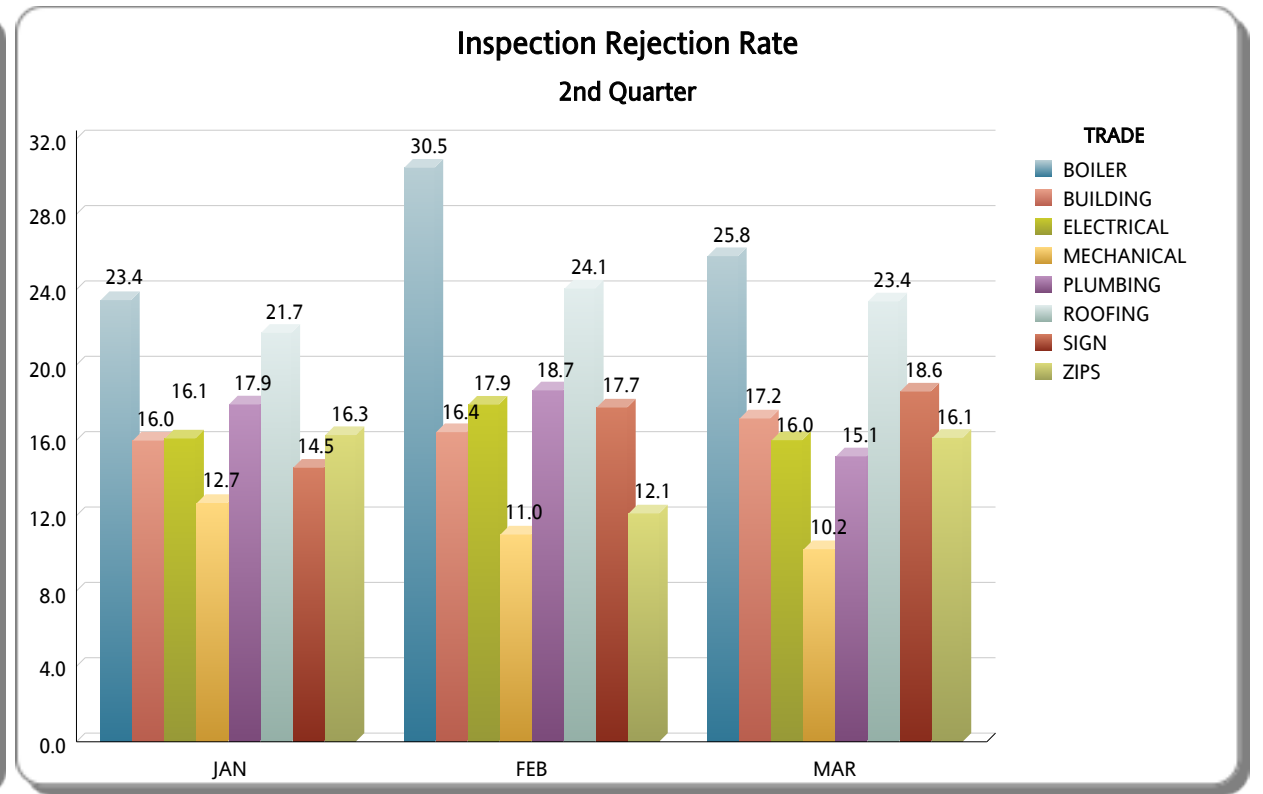
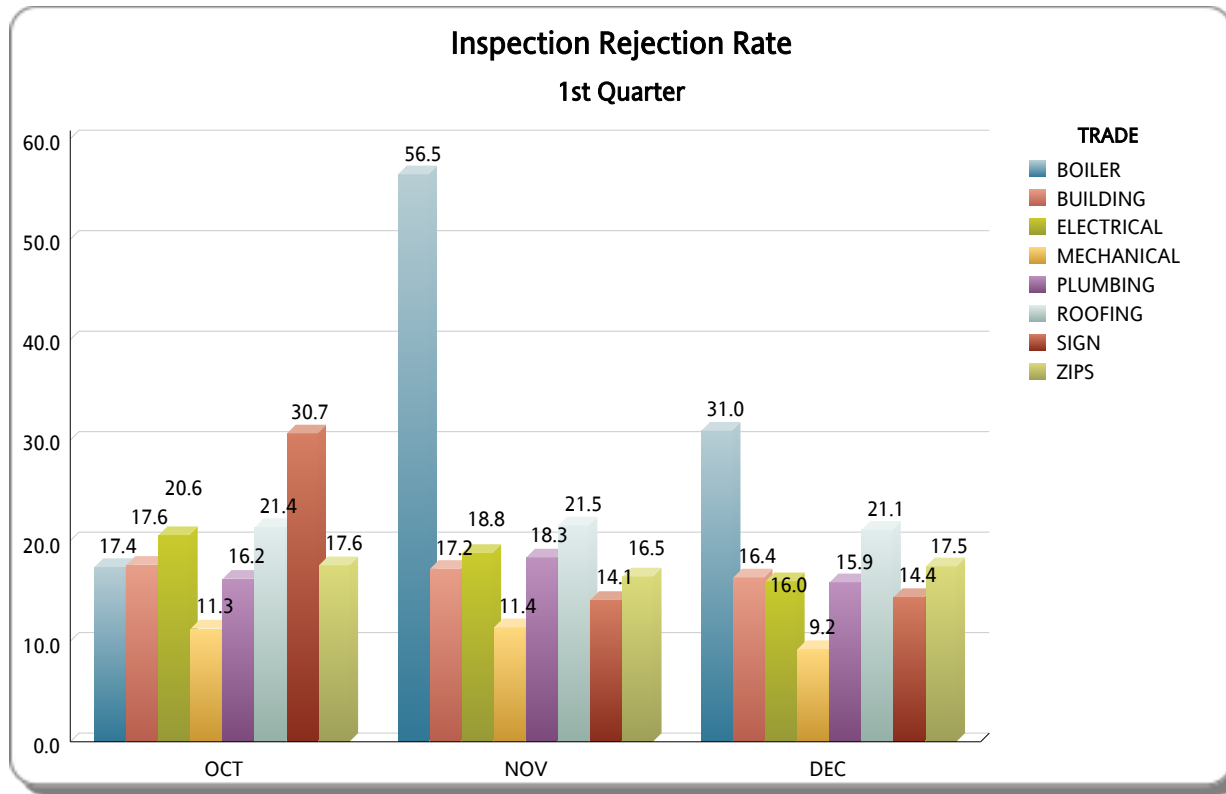
TRADE	JAN							FEB							MAR						
	*Total	Approved	Carryovers & Bad Weather	***Invalid Inspection Request	Insp. Cancelled	Rejected	% Rejection	*Total	Approved	Carryovers & Bad Weather	***Invalid Inspection Request	Insp. Cancelled	Rejected	% Rejection	*Total	Approved	Carryovers & Bad Weather	***Invalid Inspection Request	Insp. Cancelled	Rejected	% Rejection
BOILER	209	160	0	0	0	49	23.4	256	178	19	0	0	78	30.5	225	167	1	0	0	58	25.8
BUILDING	5,110	4,293	12	201	736	817	16.0	5,062	4,230	51	211	670	832	16.4	5,291	4,383	84	210	677	908	17.2
ELECTRICAL	3,553	2,981	9	213	343	572	16.1	3,828	3,143	101	204	325	685	17.9	3,923	3,295	281	214	306	628	16.0
MECHANICAL	931	813	0	39	122	118	12.7	1,018	906	0	23	120	112	11.0	1,027	922	0	33	129	105	10.2
PLUMBING	1,843	1,513	0	48	232	330	17.9	1,989	1,618	1	47	265	371	18.7	1,802	1,529	34	54	275	273	15.1
ROOFING	4,317	3,380	13	212	524	937	21.7	4,656	3,536	16	223	614	1,120	24.1	4,612	3,534	80	227	637	1,078	23.4
SIGN	165	141	0	16	43	24	14.5	124	102	2	7	28	22	17.7	156	127	15	21	19	29	18.6
ZIPS	86	72	0	12	7	14	16.3	66	58	1	11	6	8	12.1	62	52	1	6	3	10	16.1
Total	16,214	13,353	34	741	2,007	2,861	17.6	16,999	13,771	191	726	2,028	3,228	19.0	17,098	14,009	496	765	2,046	3,089	18.1

MIAMI-DADE COUNTY
DEPARTMENT OF REGULATORY AND ECONOMIC RESOURCES (RER)
Inspections Rejection Rate
Business Plan
FY: 2023/2024
From OCTOBER 1st, 2023 To SEPTEMBER 30th, 2024

TRADE	APRIL							MAY							JUNE						
	*Total	Approved	Carryovers & Bad Weather	***Invalid Inspection Request	Insp. Cancelled	Rejected	% Rejection	*Total	Approved	Carryovers & Bad Weather	***Invalid Inspection Request	Insp. Cancelled	Rejected	% Rejection	*Total	Approved	Carryovers & Bad Weather	***Invalid Inspection Request	Insp. Cancelled	Rejected	% Rejection
BOILER	188	142	0	0	0	46	24.5	168	124	1	1	0	44	26.2	183	155	0	0	0	28	15.3
BUILDING	5,663	4,639	65	251	756	1,024	18.1	5,750	4,852	63	257	768	898	15.6	4,932	4,108	73	211	773	824	16.7
ELECTRICAL	3,932	3,290	252	239	298	642	16.3	3,914	3,306	266	232	345	608	15.5	3,399	2,897	19	171	255	502	14.8
MECHANICAL	1,005	920	0	26	124	85	8.5	983	894	0	38	146	89	9.1	830	757	0	27	112	73	8.8
PLUMBING	1,936	1,643	2	59	264	293	15.1	1,989	1,642	3	52	288	347	17.4	1,786	1,489	17	56	285	297	16.6
ROOFING	5,043	3,902	190	248	605	1,141	22.6	5,082	3,812	53	238	665	1,270	25.0	3,743	2,818	159	223	636	925	24.7
SIGN	222	185	14	45	67	37	16.7	244	209	23	22	62	35	14.3	190	161	2	28	27	29	15.3
ZIPPS	90	76	6	8	2	14	15.6	88	76	2	9	5	12	13.6	80	68	2	10	9	12	15.0
Total	18,079	14,797	529	876	2,116	3,282	18.2	18,218	14,915	411	849	2,279	3,303	18.1	15,143	12,453	272	726	2,097	2,690	17.8

TRADE	JUL							AUG							SEP						
	*Total	Approved	Carryovers & Bad Weather	***Invalid Inspection Request	Insp. Cancelled	Rejected	% Rejection	*Total	Approved	Carryovers & Bad Weather	***Invalid Inspection Request	Insp. Cancelled	Rejected	% Rejection	*Total	Approved	Carryovers & Bad Weather	***Invalid Inspection Request	Insp. Cancelled	Rejected	% Rejection
BOILER	284	233	15	2	0	51	18.0	210	139	0	0	0	71	33.8	104	78	11	0	0	26	25.0
BUILDING	5,913	4,949	48	301	878	964	16.3	5,764	4,834	36	252	782	930	16.1	4,973	4,094	10	229	778	879	17.7
ELECTRICAL	3,773	3,140	66	210	304	633	16.8	4,039	3,371	133	215	325	668	16.5	3,416	2,914	32	174	271	502	14.7
MECHANICAL	1,018	925	0	35	159	93	9.1	1,166	1,032	0	33	151	134	11.5	890	772	0	16	164	118	13.3
PLUMBING	2,070	1,728	12	77	272	342	16.5	2,023	1,689	0	56	283	334	16.5	1,823	1,501	3	45	263	322	17.7
ROOFING	4,908	3,656	130	294	762	1,252	25.5	4,684	3,519	113	263	598	1,165	24.9	3,973	2,937	64	230	631	1,036	26.1
SIGN	210	196	0	19	40	14	6.7	228	187	15	18	26	41	18.0	225	199	0	42	34	26	11.6
ZIPPS	78	67	0	10	3	11	14.1	93	82	0	7	7	11	11.8	61	54	0	12	5	7	11.5
Total	18,254	14,894	271	948	2,418	3,360	18.4	18,207	14,853	297	844	2,172	3,354	18.4	15,465	12,549	120	748	2,146	2,916	18.9

MIAMI-DADE COUNTY
DEPARTMENT OF REGULATORY AND ECONOMIC RESOURCES (RER)
Inspections Rejection Rate
Business Plan
FY: 2023/2024
From OCTOBER 1st, 2023 To SEPTEMBER 30th, 2024



MIAMI-DADE COUNTY
DEPARTMENT OF REGULATORY AND ECONOMIC RESOURCES (RER)
Inspections Rejection Rate
Business Plan
 FY: 2023/2024
 From OCTOBER 1st, 2023 To SEPTEMBER 30th, 2024

