

MIAMI-DADE COUNTY
DEPARTMENT OF REGULATORY AND ECONOMIC RESOURCES (RER)
Inspections Rejection Rate
Business Plan
FY: 2024/2025
From OCTOBER 1st, 2024 To SEPTEMBER 30th, 2025

TRADE	OCT							NOV							DEC						
	*Total	Approved	Carryovers & Bad Weather	***Invalid Inspection Request	Insp. Cancelled	Rejected	% Rejection	*Total	Approved	Carryovers & Bad Weather	***Invalid Inspection Request	Insp. Cancelled	Rejected	% Rejection	*Total	Approved	Carryovers & Bad Weather	***Invalid Inspection Request	Insp. Cancelled	Rejected	% Rejection
BOILER	224	145	12	0	0	79	35.3	163	82	0	0	0	81	49.7	220	129	0	0	0	91	41.4
BUILDING	5,294	4,348	226	255	794	946	17.9	4,819	4,080	11	189	730	739	15.3	4,531	3,798	12	235	799	733	16.2
ELECTRICAL	3,748	3,051	257	156	299	697	18.6	3,312	2,806	30	141	245	506	15.3	3,050	2,572	23	169	267	478	15.7
MECHANICAL	1,012	900	30	25	158	112	11.1	966	841	0	19	187	125	12.9	908	804	0	16	142	104	11.5
PLUMBING	1,927	1,596	67	43	275	331	17.2	1,700	1,432	0	52	261	268	15.8	1,763	1,469	9	52	260	294	16.7
ROOFING	4,079	3,129	117	209	489	950	23.3	4,020	3,018	10	237	468	1,002	24.9	3,704	2,838	12	219	443	866	23.4
SIGN	141	124	7	6	22	17	12.1	187	149	0	36	17	38	20.3	194	172	1	30	39	22	11.3
ZIPS	78	60	1	7	6	18	23.1	71	63	0	7	9	8	11.3	63	53	0	9	3	10	15.9
Total	16,503	13,353	717	701	2,043	3,150	19.1	15,238	12,471	51	681	1,917	2,767	18.2	14,433	11,835	57	730	1,953	2,598	18.0

TRADE	JAN							FEB							MAR						
	*Total	Approved	Carryovers & Bad Weather	***Invalid Inspection Request	Insp. Cancelled	Rejected	% Rejection	*Total	Approved	Carryovers & Bad Weather	***Invalid Inspection Request	Insp. Cancelled	Rejected	% Rejection	*Total	Approved	Carryovers & Bad Weather	***Invalid Inspection Request	Insp. Cancelled	Rejected	% Rejection
BOILER	202	148	37	0	0	54	26.7	272	218	2	0	0	54	19.9	254	213	7	0	0	41	16.1
BUILDING	4,508	3,790	18	180	680	718	15.9	4,681	3,985	85	219	807	696	14.9	5,331	4,409	113	270	843	922	17.3
ELECTRICAL	3,034	2,572	3	124	258	462	15.2	2,944	2,551	14	107	261	393	13.3	3,459	2,974	16	162	262	485	14.0
MECHANICAL	860	752	0	23	144	108	12.6	953	836	0	29	160	117	12.3	956	817	1	37	148	139	14.5
PLUMBING	1,533	1,274	2	35	207	259	16.9	1,628	1,285	5	44	248	343	21.1	1,978	1,615	41	37	251	363	18.4
ROOFING	3,203	2,402	21	165	421	801	25.0	3,610	2,872	17	163	451	738	20.4	3,845	3,067	53	232	488	778	20.2
SIGN	173	134	0	14	36	39	22.5	165	144	0	16	15	21	12.7	183	142	1	17	32	41	22.4
ZIPS	63	52	0	6	3	11	17.5	63	53	1	4	6	10	15.9	84	77	1	13	5	7	8.3
Total	13,576	11,124	81	547	1,749	2,452	18.1	14,316	11,944	124	582	1,948	2,372	16.6	16,090	13,314	233	768	2,029	2,776	17.3

MIAMI-DADE COUNTY
DEPARTMENT OF REGULATORY AND ECONOMIC RESOURCES (RER)
Inspections Rejection Rate
Business Plan
FY: 2024/2025
From OCTOBER 1st, 2024 To SEPTEMBER 30th, 2025

TRADE	APRIL						
	*Total	Approved	Carryovers & Bad Weather	***Invalid Inspection Request	Insp. Cancelled	Rejected	% Rejection
BOILER	214	180	0	0	0	34	15.9
BUILDING	5,487	4,617	55	251	836	870	15.9
ELECTRICAL	3,628	3,115	19	133	300	513	14.1
MECHANICAL	993	865	0	27	151	128	12.9
PLUMBING	2,054	1,658	60	88	320	396	19.3
ROOFING	4,224	3,396	17	205	505	828	19.6
SIGN	211	195	4	15	16	16	7.6
ZIPS	77	69	3	12	5	8	10.4
Total	16,888	14,095	158	731	2,133	2,793	16.5

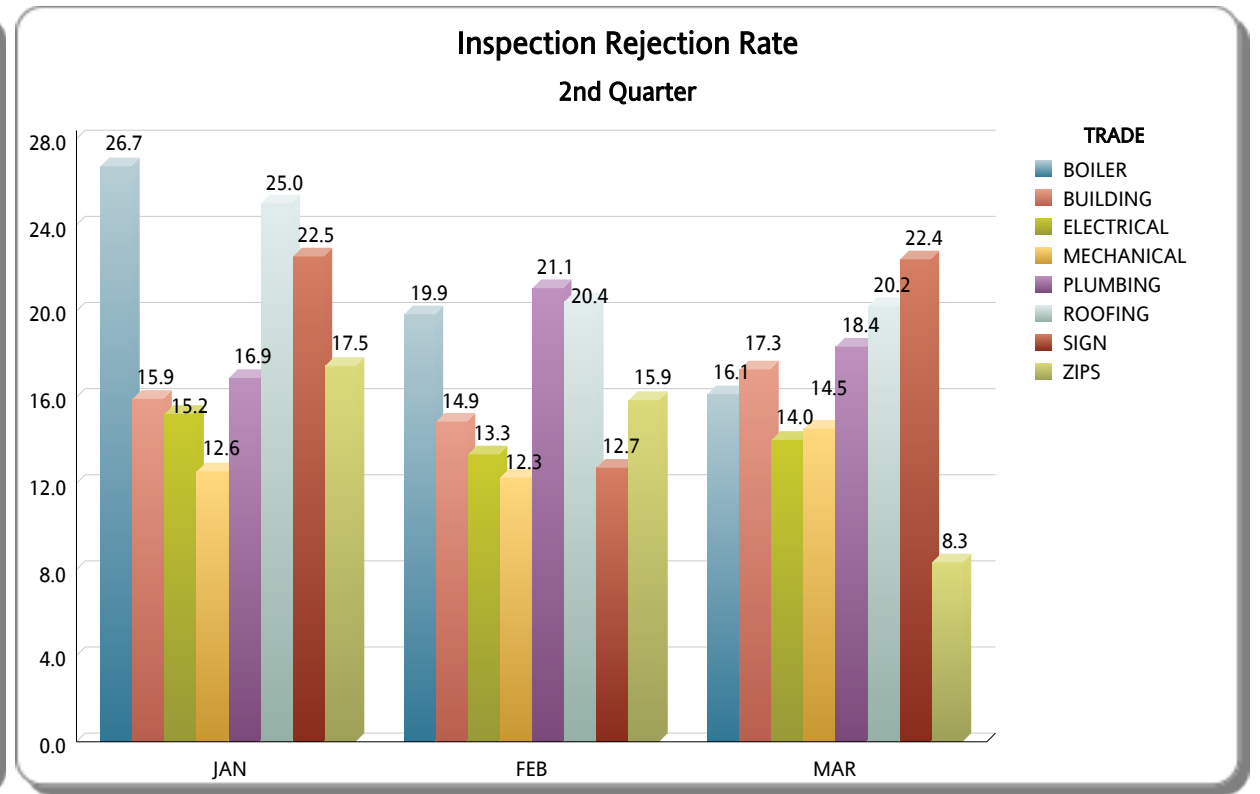
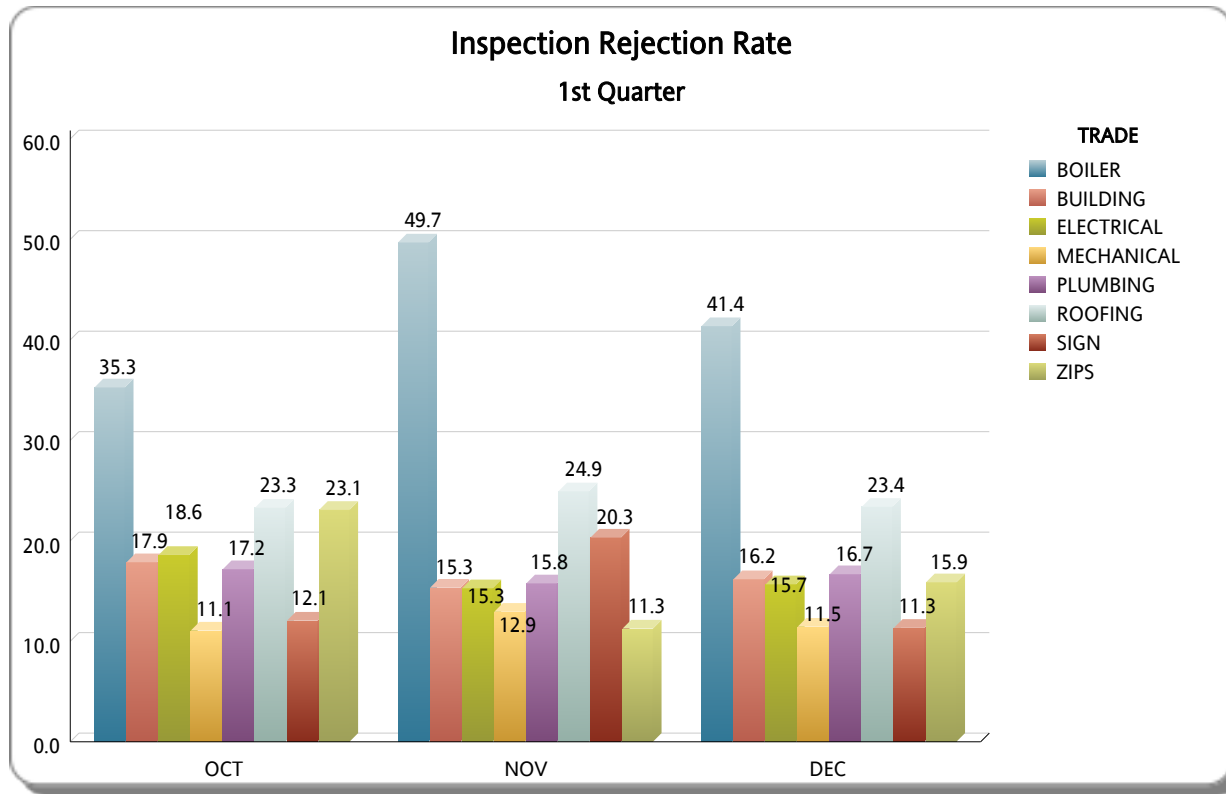
MIAMI-DADE COUNTY
DEPARTMENT OF REGULATORY AND ECONOMIC RESOURCES (RER)

Inspections Rejection Rate

Business Plan

FY: 2024/2025

From OCTOBER 1st, 2024 To SEPTEMBER 30th, 2025



MIAMI-DADE COUNTY
DEPARTMENT OF REGULATORY AND ECONOMIC RESOURCES (RER)
Inspections Rejection Rate
Business Plan
FY: 2024/2025
From OCTOBER 1st, 2024 To SEPTEMBER 30th, 2025

