

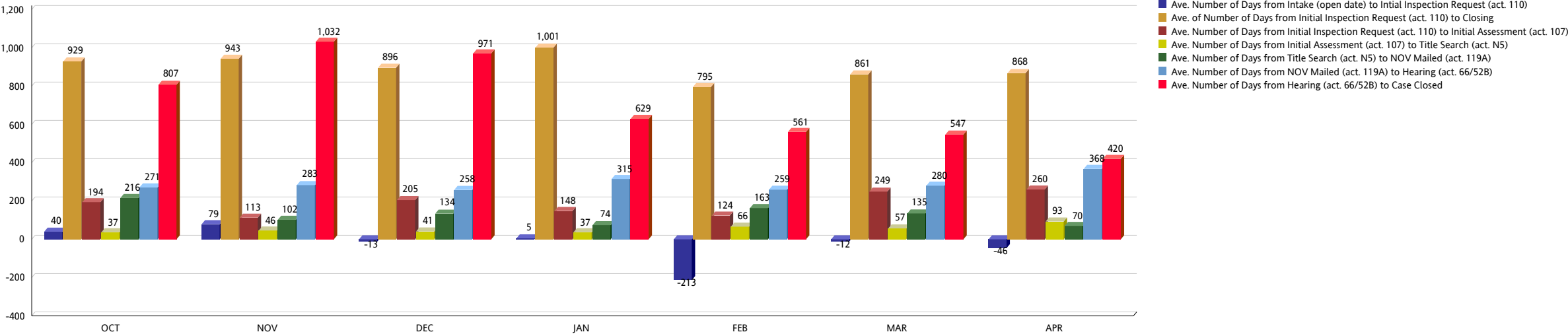
MIAMI-DADE COUNTY
DEPARTMENT OF REGULATORY AND ECONOMIC RESOURCES (RER)
UNSAFE STRUCTURES MEASURES - COMMERCIAL
From OCTOBER 2024 To SEPTEMBER 2025

COMMERCIAL NO INJUNCTION (ALL PROPERTIES)	OCT	NOV	DEC	JAN	FEB	MAR	APR	YTD TOTAL
Ave. Number of Days from Intake (open date) to Intial Inspection Request (act. 110)	40	79	-13	5	-213	-12	-46	
Number of Cases from Intake (open date) to Intial Inspection Request (act. 110)	79	54	49	77	70	64	112	505
Ave. of Number of Days from Initial Inspection Request (act. 110) to Closing	929	943	896	1,001	795	861	868	
Number of Cases from Initial Inspection Request (act. 110) to Closing	79	54	49	77	70	64	112	505
Ave. Number of Days from Initial Inspection Request (act. 110) to Initial Assessment (act. 107)	194	113	205	148	124	249	260	
Number of Cases Closed from Initial Inspection Request (act. 110) to Initial Assessment (act. 107)	72	45	39	70	39	55	97	417
Ave. Number of Days from Initial Assessment (act. 107) to Title Search (act. N5)	37	46	41	37	66	57	93	
Number of Cases from Initial Assessment (act. 107) to Title Search (act. N5)	46	29	23	59	33	24	48	262
Ave. Number of Days from Title Search (act. N5) to NOV Mailed (act. 119A)	216	102	134	74	163	135	70	
Number of Cases from Title Search (act. N5) to NOV Mailed (act. 119A)	44	28	23	57	32	22	45	251
Ave. Number of Days from NOV Mailed (act. 119A) to Hearing (act. 66/52B)	271	283	258	315	259	280	368	
Number of Cases from NOV Mailed (act. 119A) to Hearing (act. 66/52B)	29	27	16	51	28	28	60	239
Ave. Number of Days from Hearing (act. 66/52B) to Case Closed	807	1,032	971	629	561	547	420	
Number of Cases from Hearing (act. 66/52B) to Case Closed	29	27	16	51	28	28	60	239

	Weighted Average
Ave. Number of Days from Intake (open date) to Intial Inspection Request (act. 110)	-27.04
Ave. of Number of Days from Initial Inspection Request (act. 110) to Closing	897.55
Ave. Number of Days from Initial Inspection Request (act. 110) to Initial Assessment (act. 107)	194.63
Ave. Number of Days from Initial Assessment (act. 107) to Title Search (act. N5)	54.09
Ave. Number of Days from Title Search (act. N5) to NOV Mailed (act. 119A)	123.49
Ave. Number of Days from NOV Mailed (act. 119A) to Hearing (act. 66/52B)	304.87
Ave. Number of Days from Hearing (act. 66/52B) to Case Closed	648.98

MIAMI-DADE COUNTY
DEPARTMENT OF REGULATORY AND ECONOMIC RESOURCES (RER)
UNSAFE STRUCTURES MEASURES - COMMERCIAL
From OCTOBER 2024 To SEPTEMBER 2025

COMMERCIAL / NO INJUNCTION / ALL PROPERTIES



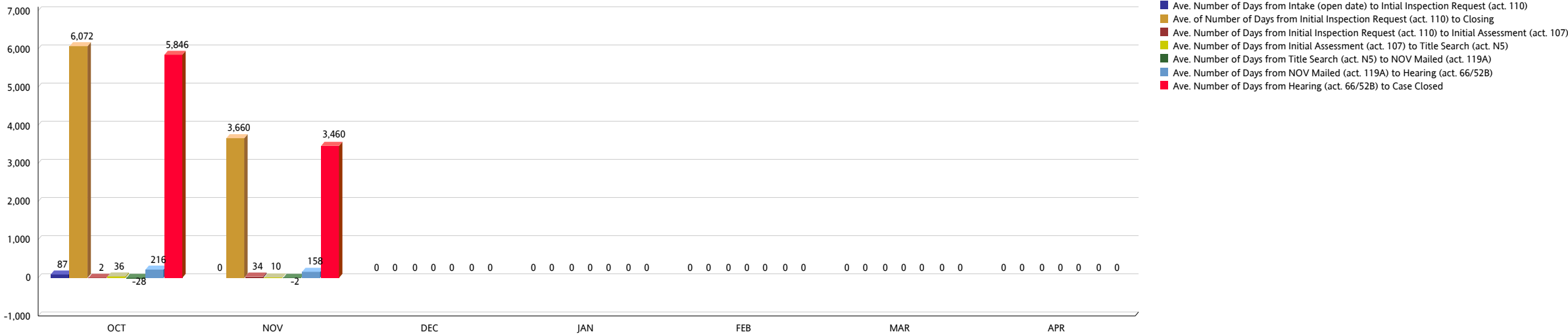
MIAMI-DADE COUNTY
DEPARTMENT OF REGULATORY AND ECONOMIC RESOURCES (RER)
UNSAFE STRUCTURES MEASURES - COMMERCIAL
From OCTOBER 2024 To SEPTEMBER 2025

COMMERCIAL WITH INJUNCTION (ALL PROPERTIES)	OCT	NOV	DEC	JAN	FEB	MAR	APR	YTD TOTAL
Ave. Number of Days from Intake (open date) to Intial Inspection Request (act. 110)	87	0	0	0	0	0	0	
Number of Cases from Intake (open date) to Intial Inspection Request (act. 110)	1	2	0	0	0	0	0	3
Ave. of Number of Days from Initial Inspection Request (act. 110) to Closing	6,072	3,660	0	0	0	0	0	
Number of Cases from Initial Inspection Request (act. 110) to Closing	1	2	0	0	0	0	0	3
Ave. Number of Days from Initial Inspection Request (act. 110) to Initial Assessment (act. 107)	2	34	0	0	0	0	0	
Number of Cases Closed from Initial Inspection Request (act. 110) to Initial Assessment (act. 107)	1	2	0	0	0	0	0	3
Ave. Number of Days from Initial Assessment (act. 107) to Title Search (act. N5)	36	10	0	0	0	0	0	
Number of Cases from Initial Assessment (act. 107) to Title Search (act. N5)	1	2	0	0	0	0	0	3
Ave. Number of Days from Title Search (act. N5) to NOV Mailed (act. 119A)	-28	-2	0	0	0	0	0	
Number of Cases from Title Search (act. N5) to NOV Mailed (act. 119A)	1	2	0	0	0	0	0	3
Ave. Number of Days from NOV Mailed (act. 119A) to Hearing (act. 66/52B)	216	158	0	0	0	0	0	
Number of Cases from NOV Mailed (act. 119A) to Hearing (act. 66/52B)	1	2	0	0	0	0	0	3
Ave. Number of Days from Hearing (act. 66/52B) to Case Closed	5,846	3,460	0	0	0	0	0	
Number of Cases from Hearing (act. 66/52B) to Case Closed	1	2	0	0	0	0	0	3

	Weighted Average
Ave. Number of Days from Intake (open date) to Intial Inspection Request (act. 110)	29.00
Ave. of Number of Days from Initial Inspection Request (act. 110) to Closing	4,464.00
Ave. Number of Days from Initial Inspection Request (act. 110) to Initial Assessment (act. 107)	23.33
Ave. Number of Days from Initial Assessment (act. 107) to Title Search (act. N5)	18.67
Ave. Number of Days from Title Search (act. N5) to NOV Mailed (act. 119A)	-10.67
Ave. Number of Days from NOV Mailed (act. 119A) to Hearing (act. 66/52B)	177.33
Ave. Number of Days from Hearing (act. 66/52B) to Case Closed	4,255.33

MIAMI-DADE COUNTY
DEPARTMENT OF REGULATORY AND ECONOMIC RESOURCES (RER)
UNSAFE STRUCTURES MEASURES - COMMERCIAL
From OCTOBER 2024 To SEPTEMBER 2025

COMMERCIAL / WITH INJUNCTION / ALL PROPERTIES



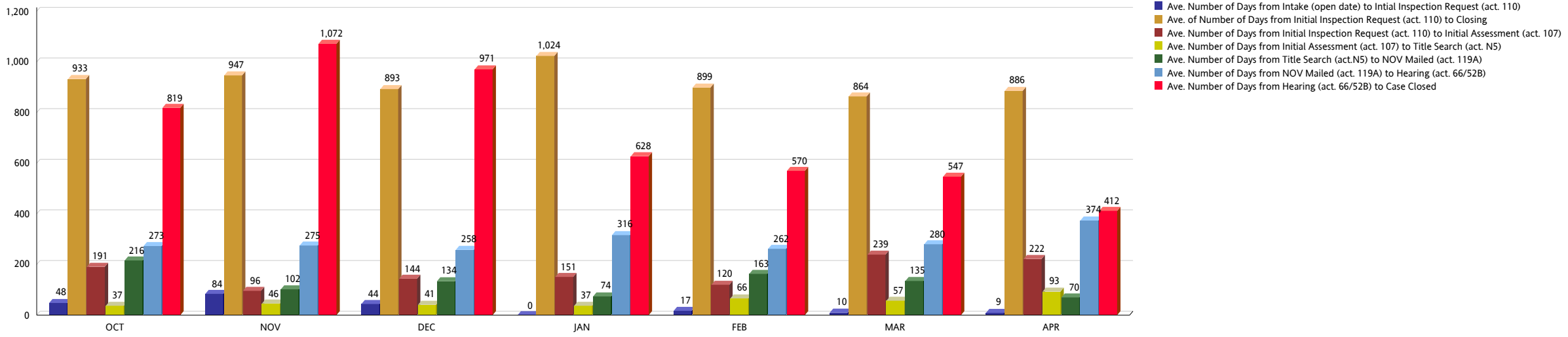
MIAMI-DADE COUNTY
DEPARTMENT OF REGULATORY AND ECONOMIC RESOURCES (RER)
UNSAFE STRUCTURES MEASURES - COMMERCIAL
From OCTOBER 2024 To SEPTEMBER 2025

COMMERCIAL NO INJUNCTION (EXCLUDING COUNTY PROPERTIES)	OCT	NOV	DEC	JAN	FEB	MAR	APR	YTD TOTAL
Ave. Number of Days from Intake (open date) to Intial Inspection Request (act. 110)	48	84	44	0	17	10	9	
Number of Cases from Intake (open date) to Intial Inspection Request (act. 110)	77	52	45	72	43	62	98	449
Ave. of Number of Days from Initial Inspection Request (act. 110) to Closing	933	947	893	1,024	899	864	886	
Number of Cases from Initial Inspection Request (act. 110) to Closing	77	52	45	72	43	62	98	449
Ave. Number of Days from Initial Inspection Request (act. 110) to Initial Assessment (act. 107)	191	96	144	151	120	239	222	
Number of Cases from Initial Inspection Request (act. 110) to Initial Assessment (act. 107)	70	43	35	67	38	54	84	391
Ave. Number of Days from Initial Assessment (act. 107) to Title Search (act. N5)	37	46	41	37	66	57	93	
Number of Cases from Initial Assessment (act. 107) to Title Search (act. N5)	46	29	23	59	33	24	48	262
Ave. Number of Days from Title Search (act.N5) to NOV Mailed (act. 119A)	216	102	134	74	163	135	70	
Number of Cases from Title Search (act. N5) to NOV Mailed (act. 119A)	44	28	23	57	32	22	45	251
Ave. Number of Days from NOV Mailed (act. 119A) to Hearing (act. 66/52B)	273	275	258	316	262	280	374	
Number of Cases from NOV Mailed (act. 119A) to Hearing (act. 66/52B)	28	26	16	49	27	28	58	232
Ave. Number of Days from Hearing (act. 66/52B) to Case Closed	819	1,072	971	628	570	547	412	
Number of Cases from Hearing (act. 66/52B) to Case Closed	28	26	16	49	27	28	58	232

	Weighted Average
Ave. Number of Days from Intake (open date) to Intial Inspection Request (act. 110)	27.34
Ave. of Number of Days from Initial Inspection Request (act. 110) to Closing	922.16
Ave. Number of Days from Initial Inspection Request (act. 110) to Initial Assessment (act. 107)	175.88
Ave. Number of Days from Initial Assessment (act. 107) to Title Search (act. N5)	54.09
Ave. Number of Days from Title Search (act. N5) to NOV Mailed (act. 119A)	123.49
Ave. Number of Days from NOV Mailed (act. 119A) to Hearing (act. 66/52B)	306.09
Ave. Number of Days from Hearing (act. 66/52B) to Case Closed	653.94

MIAMI-DADE COUNTY
DEPARTMENT OF REGULATORY AND ECONOMIC RESOURCES (RER)
UNSAFE STRUCTURES MEASURES - COMMERCIAL
From OCTOBER 2024 To SEPTEMBER 2025

COMMERCIAL / NO INJUNCTION / EXCLUDING COUNTY PROPERTIES



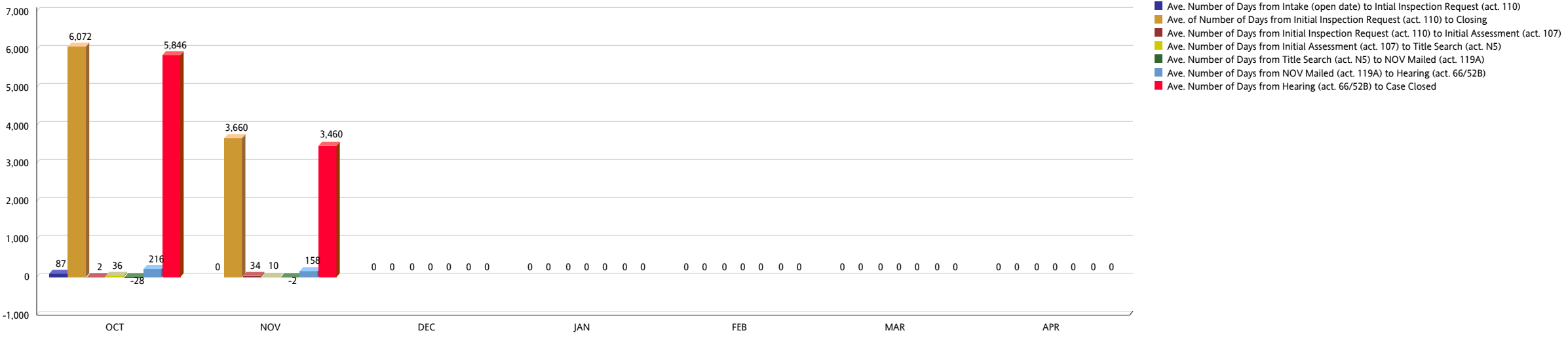
MIAMI-DADE COUNTY
DEPARTMENT OF REGULATORY AND ECONOMIC RESOURCES (RER)
UNSAFE STRUCTURES MEASURES - COMMERCIAL
From OCTOBER 2024 To SEPTEMBER 2025

COMMERCIAL WITH INJUNCTION (EXCLUDING COUNTY PROPERTIES)	OCT	NOV	DEC	JAN	FEB	MAR	APR	YTD TOTAL
Ave. Number of Days from Intake (open date) to Intial Inspection Request (act. 110)	87	0	0	0	0	0	0	
Number of Cases from Intake (open date) to Intial Inspection Request (act. 110)	1	2	0	0	0	0	0	3
Ave. of Number of Days from Initial Inspection Request (act. 110) to Closing	6,072	3,660	0	0	0	0	0	
Number of Cases from Initial Inspection Request (act. 110) to Closing	1	2	0	0	0	0	0	3
Ave. Number of Days from Initial Inspection Request (act. 110) to Initial Assessment (act. 107)	2	34	0	0	0	0	0	
Number of Cases Closed from Initial Inspection Request (act. 110) to Initial Assessment (act. 107)	1	2	0	0	0	0	0	3
Ave. Number of Days from Initial Assessment (act. 107) to Title Search (act. N5)	36	10	0	0	0	0	0	
Number of Cases from Initial Assessment (act. 107) to Title Search (act. N5)	1	2	0	0	0	0	0	3
Ave. Number of Days from Title Search (act. N5) to NOV Mailed (act. 119A)	-28	-2	0	0	0	0	0	
Number of Cases from Title Search (act. N5) to NOV Mailed (act. 119A)	1	2	0	0	0	0	0	3
Ave. Number of Days from NOV Mailed (act. 119A) to Hearing (act. 66/52B)	216	158	0	0	0	0	0	
Number of Cases from NOV Mailed (act. 119A) to Hearing (act. 66/52B)	1	2	0	0	0	0	0	3
Ave. Number of Days from Hearing (act. 66/52B) to Case Closed	5,846	3,460	0	0	0	0	0	
Number of Cases from Hearing (act. 66/52B) to Case Closed	1	2	0	0	0	0	0	3

	Weighted Average
Ave. Number of Days from Intake (open date) to Intial Inspection Request (act. 110)	29.00
Ave. of Number of Days from Initial Inspection Request (act. 110) to Closing	4,464.00
Ave. Number of Days from Initial Inspection Request (act. 110) to Initial Assessment (act. 107)	23.33
Ave. Number of Days from Initial Assessment (act. 107) to Title Search (act. N5)	18.67
Ave. Number of Days from Title Search (act. N5) to NOV Mailed (act. 119A)	-10.67
Ave. Number of Days from NOV Mailed (act. 119A) to Hearing (act. 66/52B)	177.33
Ave. Number of Days from Hearing (act. 66/52B) to Case Closed	4,255.33

MIAMI-DADE COUNTY
DEPARTMENT OF REGULATORY AND ECONOMIC RESOURCES (RER)
UNSAFE STRUCTURES MEASURES - COMMERCIAL
From OCTOBER 2024 To SEPTEMBER 2025

COMMERCIAL / WITH INJUNCTION / EXCLUDING COUNTY PROPERTIES



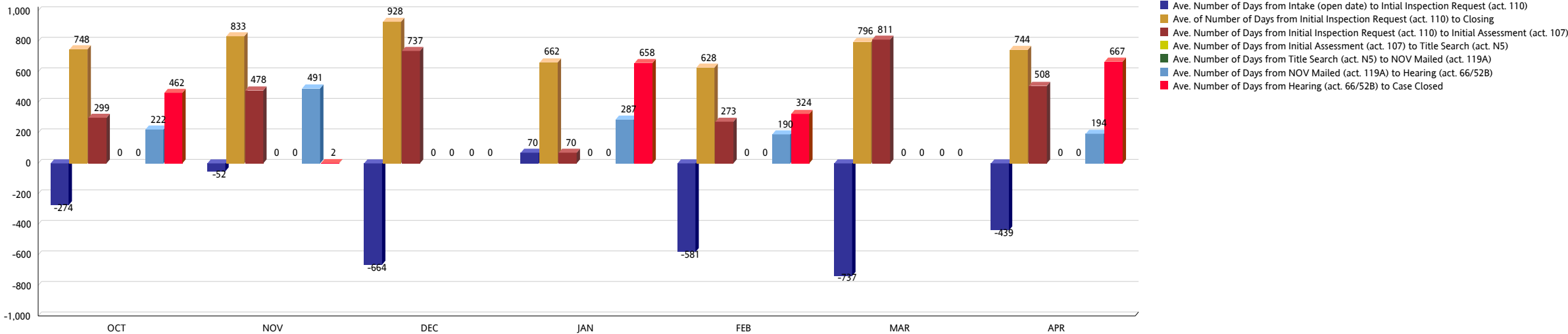
MIAMI-DADE COUNTY
DEPARTMENT OF REGULATORY AND ECONOMIC RESOURCES (RER)
UNSAFE STRUCTURES MEASURES - COMMERCIAL
From OCTOBER 2024 To SEPTEMBER 2025

COMMERCIAL NO INJUNCTION (COUNTY PROPERTIES)	OCT	NOV	DEC	JAN	FEB	MAR	APR	YTD TOTAL
Ave. Number of Days from Intake (open date) to Intial Inspection Request (act. 110)	-274	-52	-664	70	-581	-737	-439	
Number of Cases from Intake (open date) to Intial Inspection Request (act. 110)	2	2	4	5	27	2	14	56
Ave. of Number of Days from Initial Inspection Request (act. 110) to Closing	748	833	928	662	628	796	744	
Number of Cases from Initial Inspection Request (act. 110) to Closing	2	2	4	5	27	2	14	56
Ave. Number of Days from Initial Inspection Request (act. 110) to Initial Assessment (act. 107)	299	478	737	70	273	811	508	
Number of Cases Closed from Initial Inspection Request (act. 110) to Initial Assessment (act. 107)	2	2	4	3	1	1	13	26
Ave. Number of Days from Initial Assessment (act. 107) to Title Search (act. N5)	0	0	0	0	0	0	0	
Number of Cases from Initial Assessment (act. 107) to Title Search (act. N5)	0	0	0	0	0	0	0	0
Ave. Number of Days from Title Search (act. N5) to NOV Mailed (act. 119A)	0	0	0	0	0	0	0	
Number of Cases from Title Search (act. N5) to NOV Mailed (act. 119A)	0	0	0	0	0	0	0	0
Ave. Number of Days from NOV Mailed (act. 119A) to Hearing (act. 66/52B)	222	491	0	287	190	0	194	
Number of Cases from NOV Mailed (act. 119A) to Hearing (act. 66/52B)	1	1	0	2	1	0	2	7
Ave. Number of Days from Hearing (act. 66/52B) to Case Closed	462	2	0	658	324	0	667	
Number of Cases from Hearing (act. 66/52B) to Case Closed	1	1	0	2	1	0	2	7

	Weighted Average
Ave. Number of Days from Intake (open date) to Intial Inspection Request (act. 110)	-469.02
Ave. of Number of Days from Initial Inspection Request (act. 110) to Closing	699.07
Ave. Number of Days from Initial Inspection Request (act. 110) to Initial Assessment (act. 107)	476.92
Ave. Number of Days from Initial Assessment (act. 107) to Title Search (act. N5)	0
Ave. Number of Days from Title Search (act. N5) to NOV Mailed (act. 119A)	0
Ave. Number of Days from NOV Mailed (act. 119A) to Hearing (act. 66/52B)	266.43
Ave. Number of Days from Hearing (act. 66/52B) to Case Closed	491.14

MIAMI-DADE COUNTY
DEPARTMENT OF REGULATORY AND ECONOMIC RESOURCES (RER)
UNSAFE STRUCTURES MEASURES - COMMERCIAL
From OCTOBER 2024 To SEPTEMBER 2025

COMMERCIAL / NO INJUNCTION / COUNTY PROPERTIES



MIAMI-DADE COUNTY
DEPARTMENT OF REGULATORY AND ECONOMIC RESOURCES (RER)
UNSAFE STRUCTURES MEASURES - COMMERCIAL
From OCTOBER 2024 To SEPTEMBER 2025

COMMERCIAL WITH INJUNCTION (COUNTY PROPERTIES)	OCT	NOV	DEC	JAN	FEB	MAR	APR	YTD TOTAL
Ave. Number of Days from Intake (open date) to Intial Inspection Request (act. 110)	0	0	0	0	0	0	0	
Number of Cases from Intake (open date) to Intial Inspection Request (act. 110)	0	0	0	0	0	0	0	0
Ave. of Number of Days from Initial Inspection Request (act. 110) to Closing	0	0	0	0	0	0	0	
Number of Cases from Initial Inspection Request (act. 110) to Closing	0	0	0	0	0	0	0	0
Ave. Number of Days from Initial Inspection Request (act. 110) to Initial Assessment (act. 107)	0	0	0	0	0	0	0	
Number of Cases Closed from Initial Inspection Request (act. 110) to Initial Assessment (act. 107)	0	0	0	0	0	0	0	0
Ave. Number of Days from Initial Assessment (act. 107) to Title Search (act. N5)	0	0	0	0	0	0	0	
Number of Cases from Initial Assessment (act. 107) to Title Search (act. N5)	0	0	0	0	0	0	0	0
Ave. Number of Days from Title Search (act. N5) to NOV Mailed (act. 119A)	0	0	0	0	0	0	0	
Number of Cases from Title Search (act. N5) to NOV Mailed (act. 119A)	0	0	0	0	0	0	0	0
Ave. Number of Days from NOV Mailed (act. 119A) to Hearing (act. 66/52B)	0	0	0	0	0	0	0	
Number of Cases from NOV Mailed (act. 119A) to Hearing (act. 66/52B)	0	0	0	0	0	0	0	0
Ave. Number of Days from Hearing (act. 66/52B) to Case Closed	0	0	0	0	0	0	0	
Number of Cases from Hearing (act. 66/52B) to Case Closed	0	0	0	0	0	0	0	0

	Weighted Average
Ave. Number of Days from Intake (open date) to Intial Inspection Request (act. 110)	0
Ave. of Number of Days from Initial Inspection Request (act. 110) to Closing	0
Ave. Number of Days from Initial Inspection Request (act. 110) to Initial Assessment (act. 107)	0
Ave. Number of Days from Initial Assessment (act. 107) to Title Search (act. N5)	0
Ave. Number of Days from Title Search (act. N5) to NOV Mailed (act. 119A)	0
Ave. Number of Days from NOV Mailed (act. 119A) to Hearing (act. 66/52B)	0
Ave. Number of Days from Hearing (act. 66/52B) to Case Closed	0

MIAMI-DADE COUNTY
DEPARTMENT OF REGULATORY AND ECONOMIC RESOURCES (RER)
UNSAFE STRUCTURES MEASURES - COMMERCIAL
From OCTOBER 2024 To SEPTEMBER 2025

COMMERCIAL / WITH INJUNCTION / COUNTY PROPERTIES

